

Product datasheet for **TA368432**

GPR149 Rabbit Polyclonal Antibody

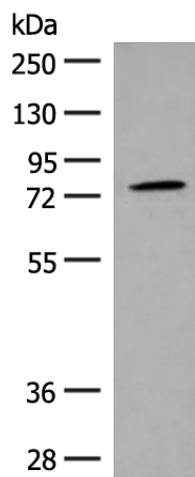
Product data:

Product Type:	Primary Antibodies
Applications:	IHC, WB
Recommended Dilution:	WB: 200-1000 WB positive control: Human prostate tissue lysate IHC: 25-100 Positive control: Human tonsil Predicted cell location: Cytoplasm
Reactivity:	Human
Host:	Rabbit
Isotype:	IgG
Clonality:	Polyclonal
Immunogen:	Synthetic peptide of human GPR149
Formulation:	pH7.4 PBS, 0.05% NaN ₃ , 40% Glycerol
Concentration:	lot specific
Purification:	Antigen affinity purification
Conjugation:	Unconjugated
Storage:	Store at -20°C.
Stability:	1 year
Predicted Protein Size:	81 kDa
Gene Name:	G protein-coupled receptor 149
Database Link:	Entrez Gene 344758 Human Q86SP6
Background:	Orphan receptor.
Synonyms:	9630018L10Rik; Ieda; PGR10

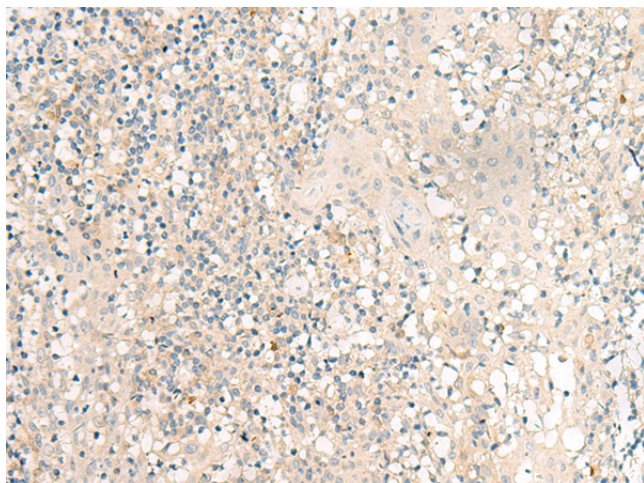


[View online »](#)

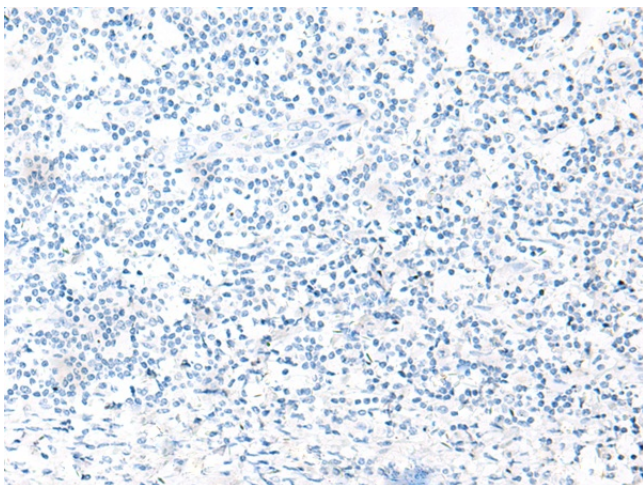
Product images:



Gel: 8%SDS-PAGE
Lysate: 40 μ g
Lane: Human prostate tissue lysate
Primary antibody: TA368432 (GPR149 Antibody) at dilution 1/250
Secondary antibody: Goat anti rabbit IgG at 1/8000 dilution
Exposure time: 3 minutes



Immunohistochemistry of paraffin-embedded Human tonsil tissue using TA368432 (GPR149 Antibody) at dilution 1/30 (Original magnification: \times 200)



Immunohistochemistry of paraffin-embedded Human tonsil tissue using TA368432 (GPR149 Antibody) at dilution 1/30, treated with synthetic peptide. (Original magnification: $\times 200$)