

Product datasheet for **TA368430**

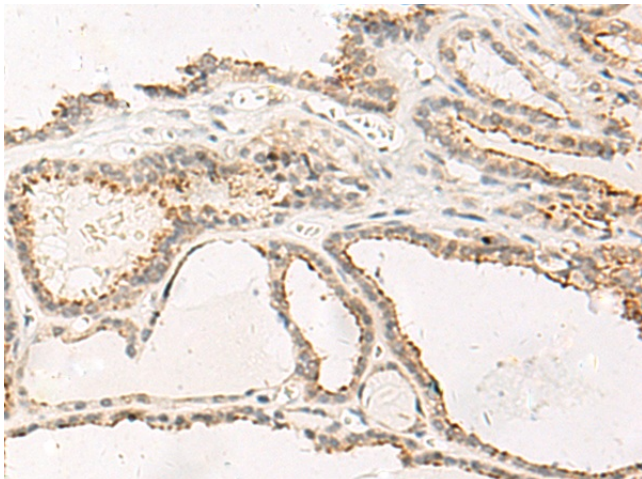
MCH2 (MCHR2) Rabbit Polyclonal Antibody

Product data:

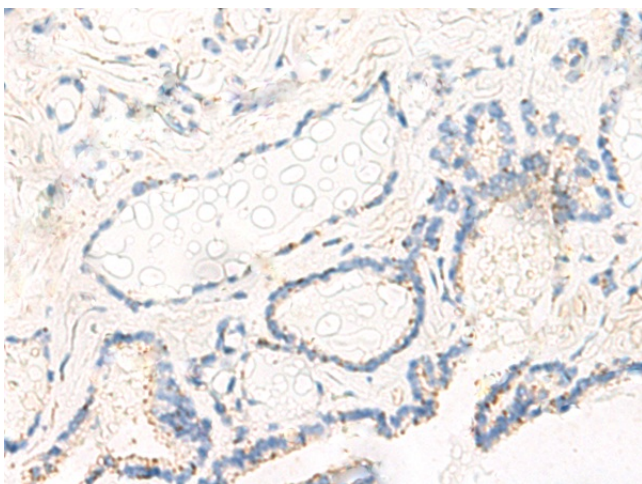
Product Type:	Primary Antibodies
Applications:	IHC
Recommended Dilution:	IHC: 20-100 Positive control: Human thyroid cancer Predicted cell location: Cell membrane
Reactivity:	Human
Host:	Rabbit
Isotype:	IgG
Clonality:	Polyclonal
Immunogen:	Synthetic peptide of human MCHR2
Formulation:	pH7.4 PBS, 0.05% NaN ₃ , 40% Glycerol
Concentration:	lot specific
Purification:	Antigen affinity purification
Conjugation:	Unconjugated
Storage:	Store at -20°C.
Stability:	1 year
Gene Name:	melanin concentrating hormone receptor 2
Database Link:	Entrez Gene 84539 Human Q969V1
Background:	Receptor for melanin-concentrating hormone, coupled to G proteins that activate phosphoinositide hydrolysis.
Synonyms:	GPR145; GPRv17; MCH-2R; MCH-R2; MCH2; MCH2R; MCHR-2; OTTHUMP00000016901; SLT



[View online »](#)

Product images:

Immunohistochemistry of paraffin-embedded Human thyroid cancer tissue using TA368430 (MCHR2 Antibody) at dilution 1/20 (Original magnification: $\times 200$)



Immunohistochemistry of paraffin-embedded Human thyroid cancer tissue using TA368430 (MCHR2 Antibody) at dilution 1/20, treated with synthetic peptide. (Original magnification: $\times 200$)