

Product datasheet for **TA368428**

GPR62 Rabbit Polyclonal Antibody

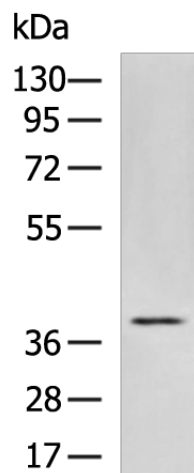
Product data:

Product Type:	Primary Antibodies
Applications:	WB
Recommended Dilution:	WB: 200-1000 WB positive control: LOVO cell lysate
Reactivity:	Human
Host:	Rabbit
Isotype:	IgG
Clonality:	Polyclonal
Immunogen:	Synthetic peptide of human GPR62
Formulation:	pH7.4 PBS, 0.05% NaN ₃ , 40% Glycerol
Concentration:	lot specific
Purification:	Antigen affinity purification
Conjugation:	Unconjugated
Storage:	Store at -20°C.
Stability:	1 year
Predicted Protein Size:	38 kDa
Gene Name:	G protein-coupled receptor 62
Database Link:	Entrez Gene 118442 Human Q9BZJ7
Background:	Orphan G-protein coupled receptor. Constitutively activates the G(q/11)/inositol phosphate and the G(s)-alpha/cAMP signaling pathways. Has spontaneous activity for beta-arrestin recruitment. Shows a reciprocal modulation of signaling functions with the melatonin receptor MTNR1B most likely through receptor heteromerization.
Synonyms:	GPCR8; KPG_005; MGC26943



[View online »](#)

Product images:



Gel: 8%SDS-PAGE

Lysate: 40 μ g

Lane: LOVO cell lysate

Primary antibody: TA368428 (GPR62 Antibody) at dilution 1/200

Secondary antibody: Goat anti rabbit IgG at 1/5000 dilution

Exposure time: 1 minute