

Product datasheet for **TA368423**

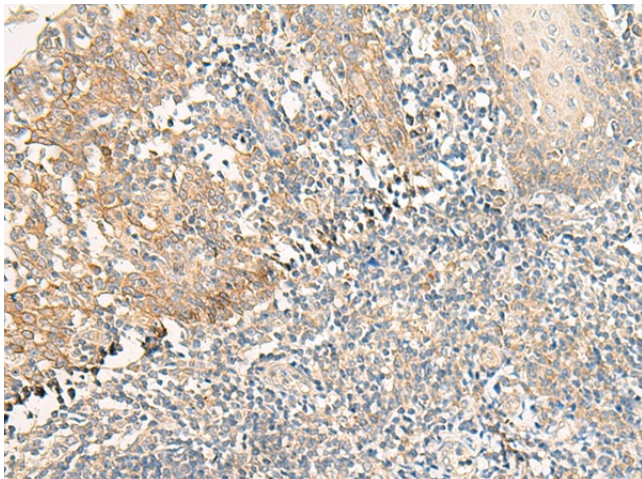
GPR35 Rabbit Polyclonal Antibody

Product data:

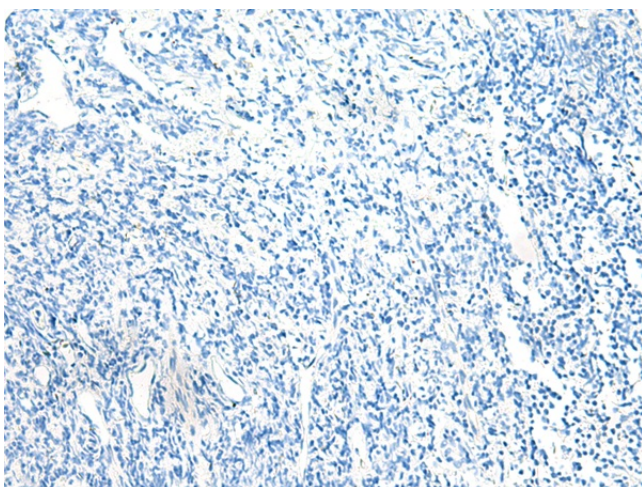
Product Type:	Primary Antibodies
Applications:	IHC
Recommended Dilution:	IHC: 25-100 Positive control: Human tonsil Predicted cell location: Cell membrane
Reactivity:	Human, Mouse
Host:	Rabbit
Isotype:	IgG
Clonality:	Polyclonal
Immunogen:	Synthetic peptide of human GPR35
Formulation:	pH7.4 PBS, 0.05% NaN ₃ , 40% Glycerol
Concentration:	lot specific
Purification:	Antigen affinity purification
Conjugation:	Unconjugated
Storage:	Store at -20°C.
Stability:	1 year
Gene Name:	G protein-coupled receptor 35
Database Link:	Entrez Gene 2859 Human Q9HC97
Background:	Acts as a receptor for kynurenic acid, an intermediate in the tryptophan metabolic pathway. The activity of this receptor is mediated by G-proteins that elicit calcium mobilization and inositol phosphate production through G(qi/o) proteins.
Synonyms:	KPG_007



[View online »](#)

Product images:

Immunohistochemistry of paraffin-embedded Human tonsil tissue using TA368423 (GPR35 Antibody) at dilution 1/25 (Original magnification: $\times 200$)



Immunohistochemistry of paraffin-embedded Human tonsil tissue using TA368423 (GPR35 Antibody) at dilution 1/25, treated with synthetic peptide. (Original magnification: $\times 200$)