

Product datasheet for **TA368421S**

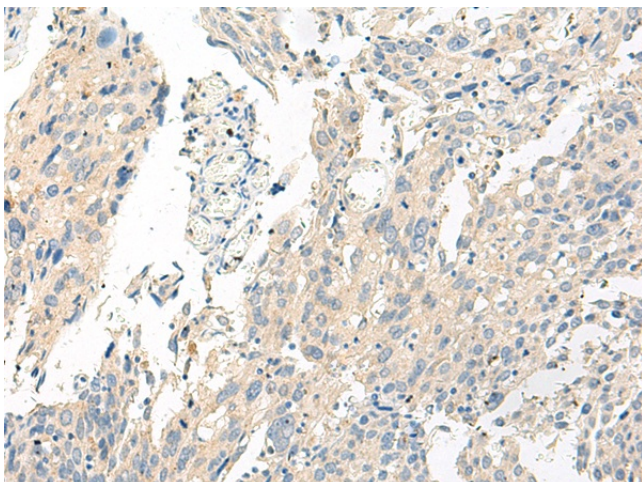
GPR26 Rabbit Polyclonal Antibody

Product data:

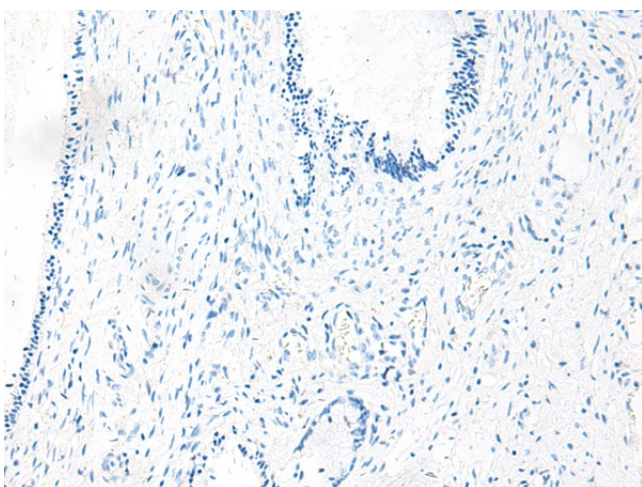
Product Type:	Primary Antibodies
Applications:	IHC
Recommended Dilution:	IHC: 20-100 Positive control: Human cervical cancer Predicted cell location: Cell membrane
Reactivity:	Human, Mouse, Rat
Host:	Rabbit
Isotype:	IgG
Clonality:	Polyclonal
Immunogen:	Synthetic peptide of human GPR26
Formulation:	pH7.4 PBS, 0.05% NaN ₃ , 40% Glycerol
Purification:	Antigen affinity purification
Conjugation:	Unconjugated
Storage:	Store at -20°C.
Stability:	1 year
Gene Name:	G protein-coupled receptor 26
Database Link:	Entrez Gene 2849 Human Q8NDV2
Background:	This gene encodes a G protein-coupled receptor protein. G-protein-coupled receptors are a large family of membrane proteins that are involved in cellular responses to environmental stimuli, neurotransmitters, and hormones. The encoded protein may play a role in neurodegenerative diseases. Epigenetic silencing of this gene has been observed in gliomas.
Synonyms:	DKFZp761H2121; FLJ33774; MGC138216



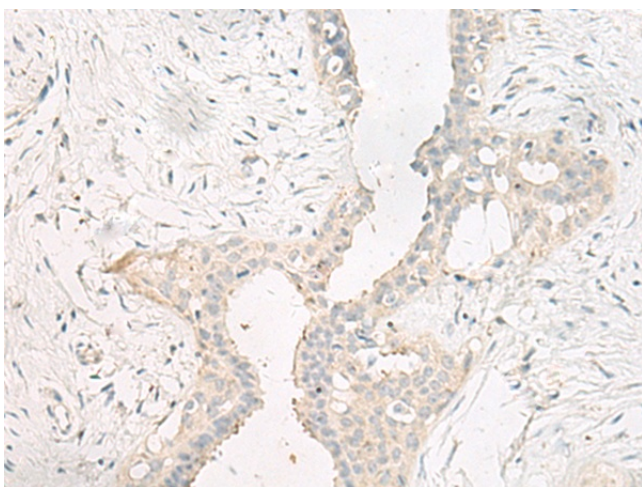
[View online »](#)

Product images:

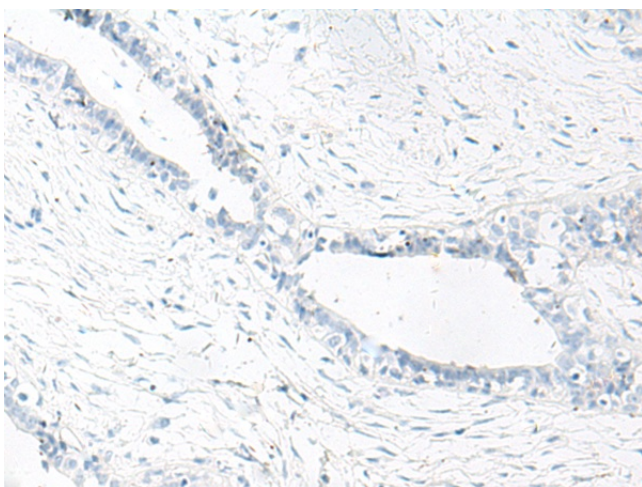
Immunohistochemistry of paraffin-embedded Human cervical cancer tissue using [TA368421] (GPR26 Antibody) at dilution 1/20 (Original magnification: $\times 200$)



Immunohistochemistry of paraffin-embedded Human cervical cancer tissue using [TA368421] (GPR26 Antibody) at dilution 1/20, treated with synthetic peptide. (Original magnification: $\times 200$)



Immunohistochemistry of paraffin-embedded Human breast cancer tissue using [TA368421] (GPR26 Antibody) at dilution 1/20 (Original magnification: $\times 200$)



Immunohistochemistry of paraffin-embedded Human breast cancer tissue using [TA368421] (GPR26 Antibody) at dilution 1/20, treated with synthetic peptide. (Original magnification: $\times 200$)