

## Product datasheet for **TA368416**

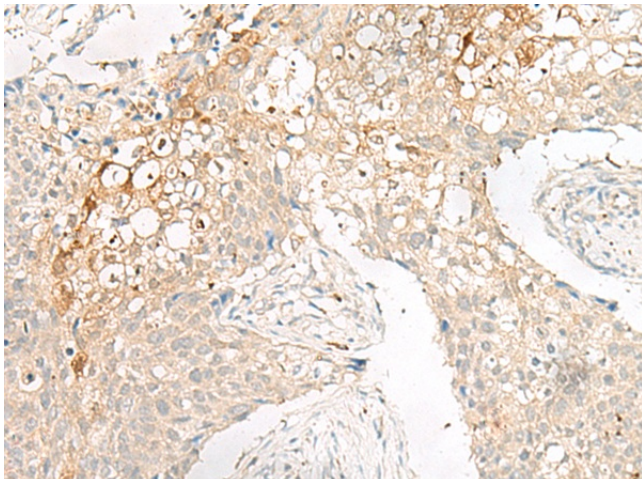
### GPR78 Rabbit Polyclonal Antibody

#### Product data:

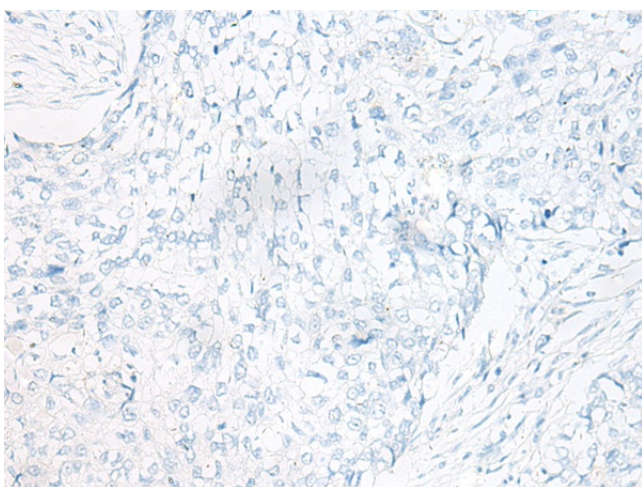
Product Type:	Primary Antibodies
Applications:	IHC
Recommended Dilution:	IHC: 20-100 Positive control: Human lung cancer Predicted cell location: Cytoplasm and Cell membrane
Reactivity:	Human
Host:	Rabbit
Isotype:	IgG
Clonality:	Polyclonal
Immunogen:	Synthetic peptide of human GPR78
Formulation:	pH7.4 PBS, 0.05% NaN <sub>3</sub> , 40% Glycerol
Concentration:	lot specific
Purification:	Antigen affinity purification
Conjugation:	Unconjugated
Storage:	Store at -20°C.
Stability:	1 year
Gene Name:	G protein-coupled receptor 78
Database Link:	<a href="#">Entrez Gene 27201 Human Q96P69</a>
Background:	The protein encoded by this gene belongs to the G protein-coupled receptor family, which contain 7 transmembrane domains and transduce extracellular signals through heterotrimeric G proteins. This is an orphan receptor, which displays significant level of constitutive activity. Association analysis shows preliminary evidence for the involvement of this gene in susceptibility to bipolar affective disorder and schizophrenia. Alternatively spliced transcript variants have been found for this gene.
Synonyms:	GPR78



[View online »](#)

**Product images:**

Immunohistochemistry of paraffin-embedded Human lung cancer tissue using TA368416 (GPR78 Antibody) at dilution 1/20 (Original magnification:  $\times 200$ )



Immunohistochemistry of paraffin-embedded Human lung cancer tissue using TA368416 (GPR78 Antibody) at dilution 1/20, treated with synthetic peptide. (Original magnification:  $\times 200$ )