

Product datasheet for **TA368398**

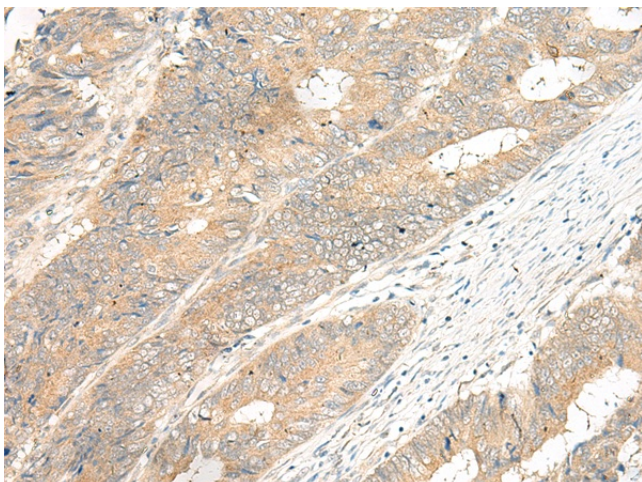
GPR12 Rabbit Polyclonal Antibody

Product data:

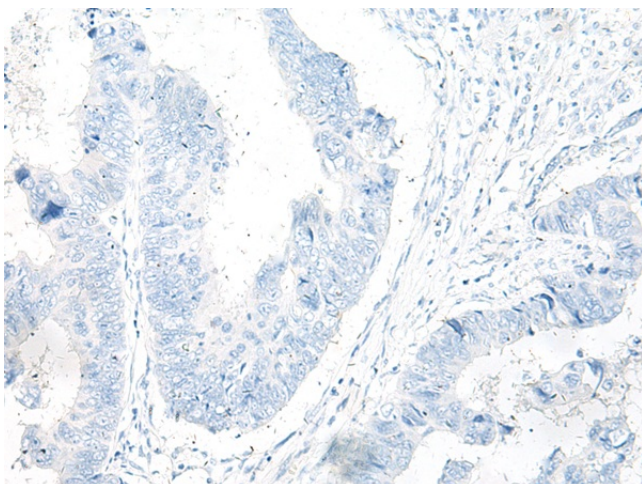
Product Type:	Primary Antibodies
Applications:	IHC
Recommended Dilution:	IHC: 40-200 Positive control: Human colorectal cancer Predicted cell location: Cell membrane
Reactivity:	Human, Mouse, Rat
Host:	Rabbit
Isotype:	IgG
Clonality:	Polyclonal
Immunogen:	Synthetic peptide of human GPR12
Formulation:	pH7.4 PBS, 0.05% NaN ₃ , 40% Glycerol
Concentration:	lot specific
Purification:	Antigen affinity purification
Conjugation:	Unconjugated
Storage:	Store at -20°C.
Stability:	1 year
Gene Name:	G protein-coupled receptor 12
Database Link:	Entrez Gene 2835 Human P47775
Background:	Promotes neurite outgrowth and blocks myelin inhibition in neurons (By similarity). Receptor with constitutive G(s) signaling activity that stimulates cyclic AMP production.
Synonyms:	GPCR12; GPCR21



[View online »](#)

Product images:

Immunohistochemistry of paraffin-embedded Human colorectal cancer tissue using TA368398 (GPR12 Antibody) at dilution 1/35 (Original magnification: $\times 200$)



Immunohistochemistry of paraffin-embedded Human colorectal cancer tissue using TA368398 (GPR12 Antibody) at dilution 1/35, treated with synthetic peptide. (Original magnification: $\times 200$)