

## Product datasheet for **TA368396S**

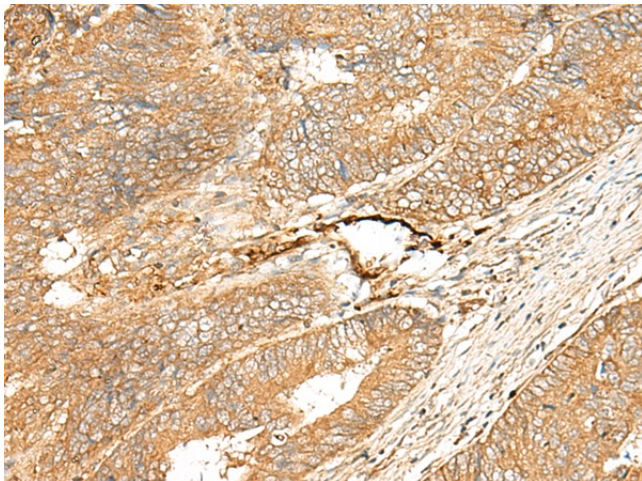
### **GPR116 (ADGRF5) Rabbit Polyclonal Antibody**

#### **Product data:**

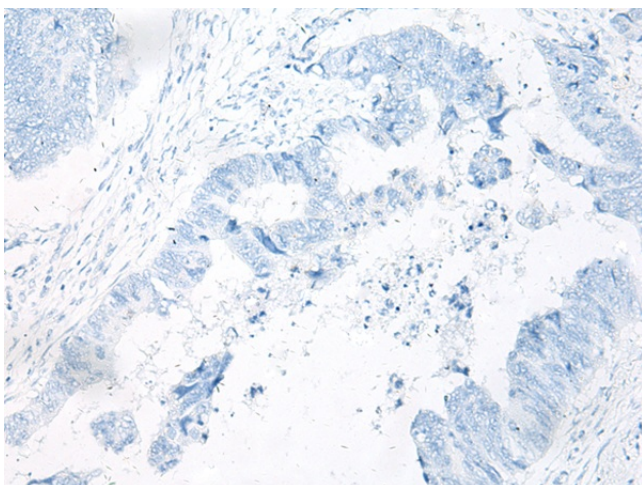
<b>Product Type:</b>	Primary Antibodies
<b>Applications:</b>	IHC
<b>Recommended Dilution:</b>	IHC: 40-200 Positive control: Human colorectal cancer Predicted cell location: Cell membrane
<b>Reactivity:</b>	Human
<b>Host:</b>	Rabbit
<b>Isotype:</b>	IgG
<b>Clonality:</b>	Polyclonal
<b>Immunogen:</b>	Synthetic peptide of human ADGRF5
<b>Formulation:</b>	pH7.4 PBS, 0.05% NaN <sub>3</sub> , 40% Glycerol
<b>Purification:</b>	Antigen affinity purification
<b>Conjugation:</b>	Unconjugated
<b>Storage:</b>	Store at -20°C.
<b>Stability:</b>	1 year
<b>Gene Name:</b>	adhesion G protein-coupled receptor F5
<b>Database Link:</b>	<a href="#">Entrez Gene 221395 Human Q8IZF2</a>
<b>Background:</b>	Receptor that plays a critical role in lung surfactant homeostasis. May play a role in controlling adipocyte function.



[View online »](#)

**Product images:**

Immunohistochemistry of paraffin-embedded Human colorectal cancer tissue using [TA368396] (ADGRF5 Antibody) at dilution 1/40 (Original magnification:  $\times 200$ )



Immunohistochemistry of paraffin-embedded Human colorectal cancer tissue using [TA368396] (ADGRF5 Antibody) at dilution 1/40, treated with synthetic peptide. (Original magnification:  $\times 200$ )