

## Product datasheet for **TA368396**

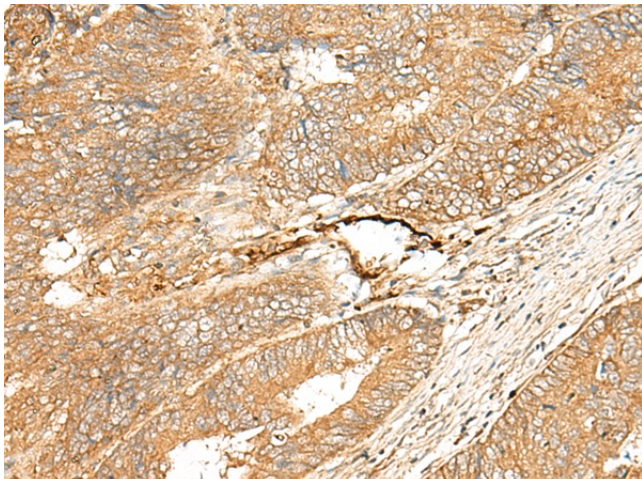
### GPR116 (ADGRF5) Rabbit Polyclonal Antibody

#### Product data:

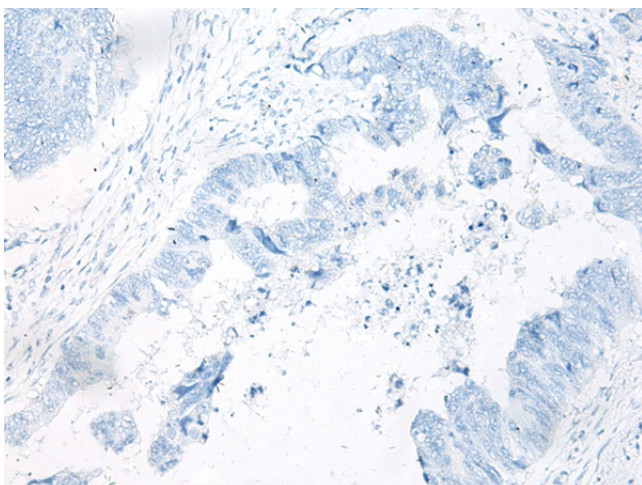
Product Type:	Primary Antibodies
Applications:	IHC
Recommended Dilution:	IHC: 40-200 Positive control: Human colorectal cancer Predicted cell location: Cell membrane
Reactivity:	Human
Host:	Rabbit
Isotype:	IgG
Clonality:	Polyclonal
Immunogen:	Synthetic peptide of human ADGRF5
Formulation:	pH7.4 PBS, 0.05% NaN <sub>3</sub> , 40% Glycerol
Concentration:	lot specific
Purification:	Antigen affinity purification
Conjugation:	Unconjugated
Storage:	Store at -20°C.
Stability:	1 year
Gene Name:	adhesion G protein-coupled receptor F5
Database Link:	<a href="#">Entrez Gene 221395 Human Q8IZF2</a>
Background:	Receptor that plays a critical role in lung surfactant homeostasis. May play a role in controlling adipocyte function.



[View online »](#)

**Product images:**

Immunohistochemistry of paraffin-embedded Human colorectal cancer tissue using TA368396 (ADGRF5 Antibody) at dilution 1/40 (Original magnification:  $\times 200$ )



Immunohistochemistry of paraffin-embedded Human colorectal cancer tissue using TA368396 (ADGRF5 Antibody) at dilution 1/40, treated with synthetic peptide. (Original magnification:  $\times 200$ )