

Product datasheet for **TA368389**

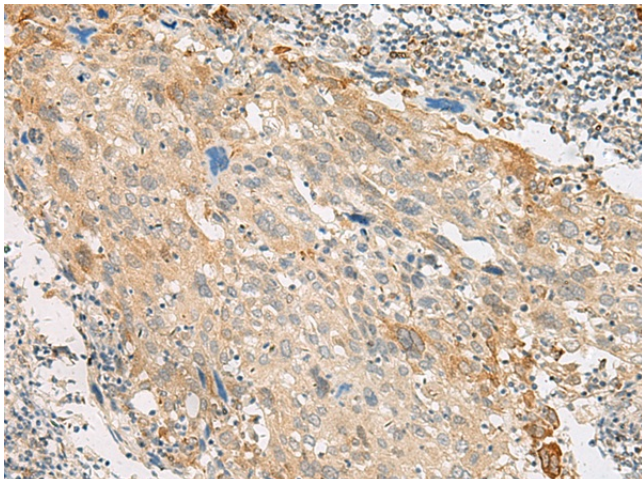
GPCR 2037 (GPR151) Rabbit Polyclonal Antibody

Product data:

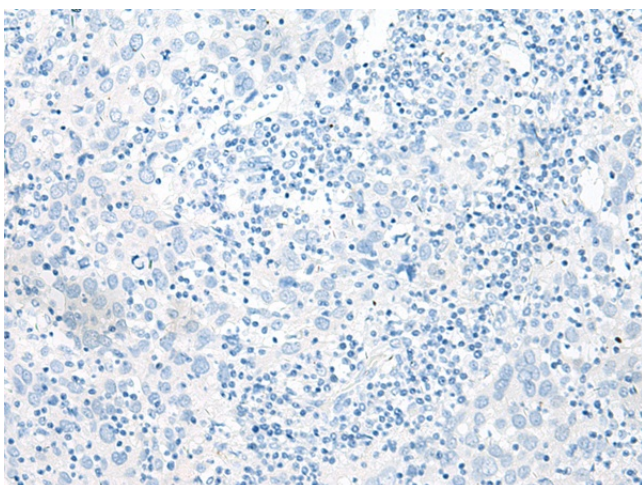
Product Type:	Primary Antibodies
Applications:	IHC
Recommended Dilution:	IHC: 40-200 Positive control: Human cervical cancer Predicted cell location: Cell membrane
Reactivity:	Human
Host:	Rabbit
Isotype:	IgG
Clonality:	Polyclonal
Immunogen:	Synthetic peptide of human GPR151
Formulation:	pH7.4 PBS, 0.05% NaN ₃ , 40% Glycerol
Concentration:	lot specific
Purification:	Antigen affinity purification
Conjugation:	Unconjugated
Storage:	Store at -20°C.
Stability:	1 year
Gene Name:	G protein-coupled receptor 151
Database Link:	Entrez Gene 134391 Human Q8TDV0
Background:	The protein encoded by this gene is similar to the galanin receptor subfamily of G protein-coupled receptors. The encoded protein is found predominantly in the central nervous system.
Synonyms:	C130082O03Rik; GalRL; nGPCR-2037; PGR7



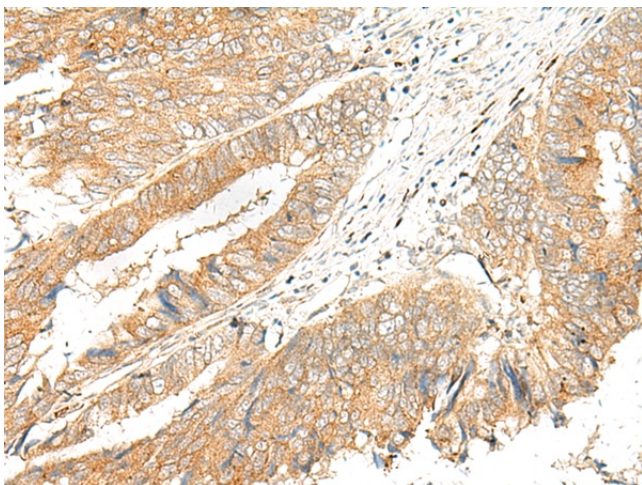
[View online »](#)

Product images:

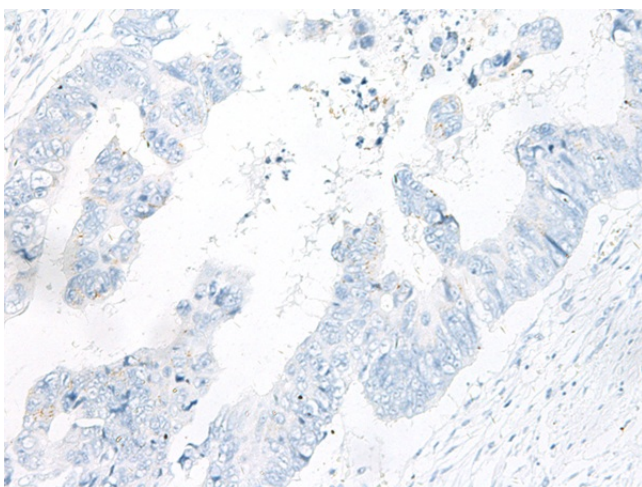
Immunohistochemistry of paraffin-embedded Human cervical cancer tissue using TA368389 (GPR151 Antibody) at dilution 1/45 (Original magnification: $\times 200$)



Immunohistochemistry of paraffin-embedded Human cervical cancer tissue using TA368389 (GPR151 Antibody) at dilution 1/45, treated with synthetic peptide. (Original magnification: $\times 200$)



Immunohistochemistry of paraffin-embedded Human colorectal cancer tissue using TA368389 (GPR151 Antibody) at dilution 1/45 (Original magnification: $\times 200$)



Immunohistochemistry of paraffin-embedded Human colorectal cancer tissue using TA368389 (GPR151 Antibody) at dilution 1/45, treated with synthetic peptide. (Original magnification: $\times 200$)