

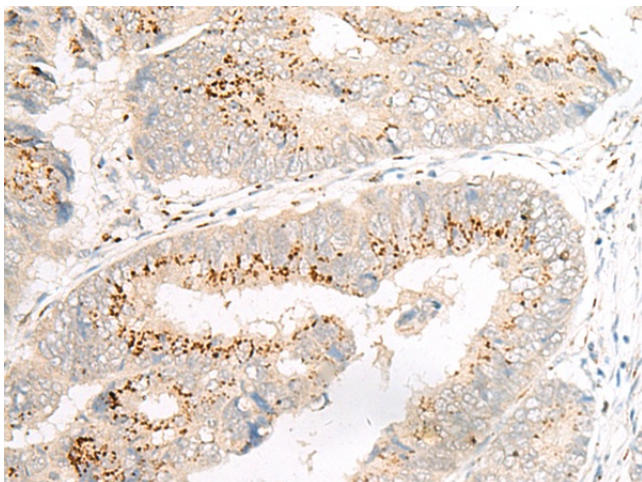
Product datasheet for **TA368387S**

GOLPH4 (GOLIM4) Rabbit Polyclonal Antibody

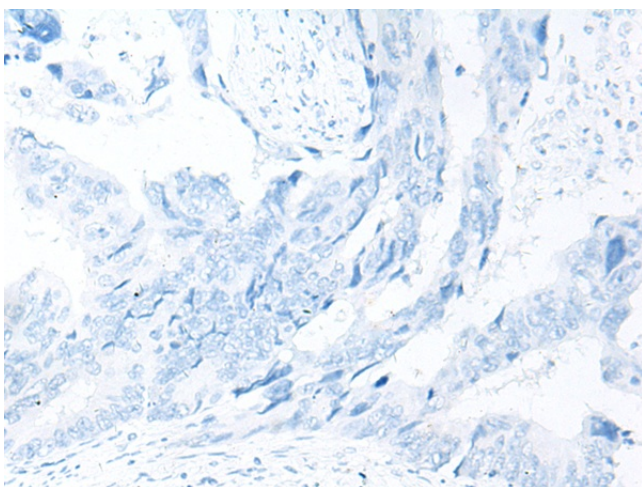
Product data:

Product Type:	Primary Antibodies
Applications:	IHC
Recommended Dilution:	IHC: 20–100 Positive control: Human colorectal cancer Predicted cell location: Cytoplasm
Reactivity:	Human, Mouse, Rat
Host:	Rabbit
Isotype:	IgG
Clonality:	Polyclonal
Immunogen:	Synthetic peptide of human GOLIM4
Formulation:	pH7.4 PBS, 0.05% NaN ₃ , 40% Glycerol
Purification:	Antigen affinity purification
Conjugation:	Unconjugated
Storage:	Store at –20°C.
Stability:	1 year
Gene Name:	golgi integral membrane protein 4
Database Link:	Entrez Gene 27333 Human O00461
Background:	The Golgi complex plays a key role in the sorting and modification of proteins exported from the endoplasmic reticulum. The protein encoded by this gene is a type II Golgi-resident protein. It may process proteins synthesized in the rough endoplasmic reticulum and assist in the transport of protein cargo through the Golgi apparatus.
Synonyms:	GIMPC; GOLPH4; GPP130; P138



Product images:

Immunohistochemistry of paraffin-embedded Human colorectal cancer tissue using [TA368387] (GOLIM4 Antibody) at dilution 1/20 (Original magnification: ×200)



Immunohistochemistry of paraffin-embedded Human colorectal cancer tissue using [TA368387] (GOLIM4 Antibody) at dilution 1/20, treated with synthetic peptide. (Original magnification: ×200)