

## Product datasheet for **TA368387**

### **GOLPH4 (GOLIM4) Rabbit Polyclonal Antibody**

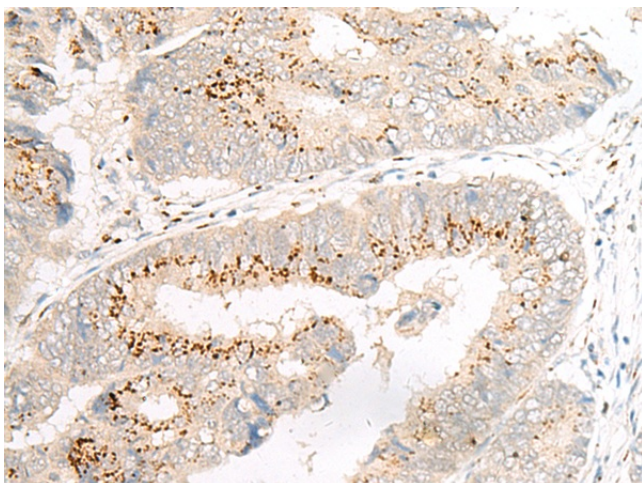
#### **Product data:**

|                              |  |
|------------------------------|--|
| <b>Product Type:</b>         | Primary Antibodies   |
| <b>Applications:</b>         | IHC  |
| <b>Recommended Dilution:</b> | IHC: 20–100<br>Positive control: Human colorectal cancer<br>Predicted cell location: Cytoplasm   |
| <b>Reactivity:</b>           | Human, Mouse, Rat  |
| <b>Host:</b>                 | Rabbit   |
| <b>Isotype:</b>              | IgG  |
| <b>Clonality:</b>            | Polyclonal   |
| <b>Immunogen:</b>            | Synthetic peptide of human GOLIM4  |
| <b>Formulation:</b>          | pH7.4 PBS, 0.05% NaN <sub>3</sub> , 40% Glycerol   |
| <b>Concentration:</b>        | lot specific   |
| <b>Purification:</b>         | Antigen affinity purification  |
| <b>Conjugation:</b>          | Unconjugated   |
| <b>Storage:</b>              | Store at –20°C.  |
| <b>Stability:</b>            | 1 year   |
| <b>Gene Name:</b>            | golgi integral membrane protein 4  |
| <b>Database Link:</b>        | <a href="#">Entrez Gene 27333 Human</a><br><a href="#">O00461</a>  |
| <b>Background:</b>           | The Golgi complex plays a key role in the sorting and modification of proteins exported from the endoplasmic reticulum. The protein encoded by this gene is a type II Golgi-resident protein. It may process proteins synthesized in the rough endoplasmic reticulum and assist in the transport of protein cargo through the Golgi apparatus. |

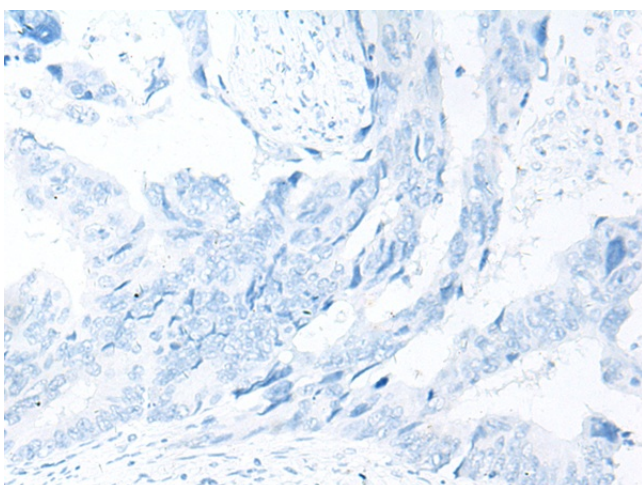


**Synonyms:** GIMPC; GOLPH4; GPP130; P138

**Product images:**



Immunohistochemistry of paraffin-embedded Human colorectal cancer tissue using TA368387 (GOLIM4 Antibody) at dilution 1/20 (Original magnification: ×200)



Immunohistochemistry of paraffin-embedded Human colorectal cancer tissue using TA368387 (GOLIM4 Antibody) at dilution 1/20, treated with synthetic peptide. (Original magnification: ×200)