

## Product datasheet for **TA368372**

### GLCCI1 Rabbit Polyclonal Antibody

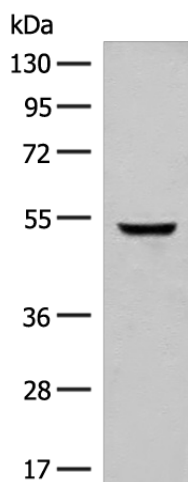
#### Product data:

Product Type:	Primary Antibodies
Applications:	WB
Recommended Dilution:	WB: 500-2000 WB positive control: Human cerebella tissue lysate
Reactivity:	Human, Mouse
Host:	Rabbit
Isotype:	IgG
Clonality:	Polyclonal
Immunogen:	Synthetic peptide of human GLCCI1
Formulation:	pH7.4 PBS, 0.05% NaN <sub>3</sub> , 40% Glycerol
Concentration:	lot specific
Purification:	Antigen affinity purification
Conjugation:	Unconjugated
Storage:	Store at -20°C.
Stability:	1 year
Predicted Protein Size:	58 kDa
Gene Name:	glucocorticoid induced 1
Database Link:	<a href="#">Entrez Gene 113263 Human Q86VQ1</a>
Background:	This gene encodes a protein of unknown function. Expression of this gene is induced by glucocorticoids and may be an early marker for glucocorticoid-induced apoptosis. Single nucleotide polymorphisms in this gene are associated with a decreased response to inhaled glucocorticoids in asthmatic patients.
Synonyms:	FAM117C; GIG18; TSSN1



[View online »](#)

## Product images:



Gel: 8%SDS-PAGE

Lysate: 40 µg

Lane: Human cerebella tissue lysate

Primary antibody: TA368372 (GLCCI1 Antibody) at dilution 1/400

Secondary antibody: Goat anti rabbit IgG at 1/8000 dilution

Exposure time: 10 seconds