

## Product datasheet for **TA368371**

### GIPC (GIPC1) Rabbit Polyclonal Antibody

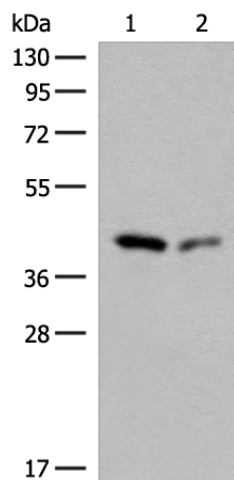
#### Product data:

Product Type:	Primary Antibodies
Applications:	WB
Recommended Dilution:	WB: 500-2000 WB positive control: Hela and HEPG2 cell lysates
Reactivity:	Human, Mouse, Rat
Host:	Rabbit
Isotype:	IgG
Clonality:	Polyclonal
Immunogen:	Synthetic peptide of human GIPC1
Formulation:	pH7.4 PBS, 0.05% NaN <sub>3</sub> , 40% Glycerol
Concentration:	lot specific
Purification:	Antigen affinity purification
Conjugation:	Unconjugated
Storage:	Store at -20°C.
Stability:	1 year
Predicted Protein Size:	36 kDa
Gene Name:	GIPC PDZ domain containing family member 1
Database Link:	<a href="#">Entrez Gene 10755 Human O14908</a>
Background:	GIPC1 is a scaffolding protein that regulates cell surface receptor expression and trafficking.
Synonyms:	C19orf3; GIPC; GLUT1CBP; IIP-1; MGC3774; MGC15889; NIP; RGS19IP1; SEMCAP; SYNECTIIN; SYNECTIN; TIP-2



[View online »](#)

## Product images:



Gel: 8%SDS-PAGE

Lysate: 40  $\mu$ g

Lane 1-2: HeLa and HEPG2 cell lysates

Primary antibody: TA368371 (GIPC1 Antibody) at dilution 1/400

Secondary antibody: Goat anti rabbit IgG at 1/8000 dilution

Exposure time: 1 minute