

## Product datasheet for **TA368359S**

### GBA Rabbit Polyclonal Antibody

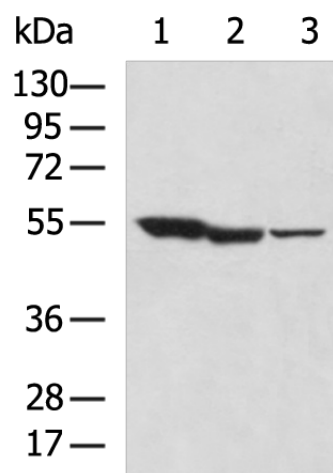
#### Product data:

Product Type:	Primary Antibodies
Applications:	WB
Recommended Dilution:	WB: 500-2000 WB positive control: Mouse heart tissue, Mouse liver tissue, Mouse brain tissue lysates
Reactivity:	Human, Mouse
Host:	Rabbit
Isotype:	IgG
Clonality:	Polyclonal
Immunogen:	Synthetic peptide of human GBA
Formulation:	pH7.4 PBS, 0.05% NaN <sub>3</sub> , 40% Glycerol
Purification:	Antigen affinity purification
Conjugation:	Unconjugated
Storage:	Store at -20°C.
Stability:	1 year
Predicted Protein Size:	60 kDa
Gene Name:	glucosylceramidase beta
Database Link:	<a href="#">Entrez Gene 2629 Human P04062</a>
Background:	This gene encodes a lysosomal membrane protein that cleaves the beta-glucosidic linkage of glycosylceramide, an intermediate in glycolipid metabolism. Mutations in this gene cause Gaucher disease, a lysosomal storage disease characterized by an accumulation of glucocerebrosides. A related pseudogene is approximately 12 kb downstream of this gene on chromosome 1. Alternative splicing results in multiple transcript variants.
Synonyms:	Alglucerase; beta-glucocerebrosidase; GBA1; GC; GCB; GLUC; glucocerebrosidase; Imiglucerase



[View online »](#)

## Product images:



Gel: 8%SDS-PAGE  
Lysate: 40 µg  
Lane 1-3: Mouse heart tissue  
Mouse liver tissue  
Mouse brain tissue lysates  
Primary antibody: [TA368359] (GBA Antibody) at dilution 1/400  
Secondary antibody: Goat anti rabbit IgG at 1/5000 dilution  
Exposure time: 3 minutes