

## Product datasheet for **TA368350**

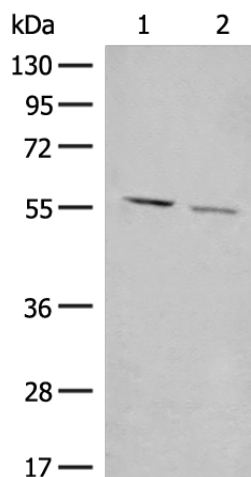
### GADL1 Rabbit Polyclonal Antibody

#### Product data:

Product Type:	Primary Antibodies
Applications:	IHC, WB
Recommended Dilution:	WB: 200-1000 WB positive control: 293T and K562 cell lysates IHC: 30-150 Positive control: Human cervical cancer Predicted cell location: Cytoplasm
Reactivity:	Human, Mouse
Host:	Rabbit
Isotype:	IgG
Clonality:	Polyclonal
Immunogen:	Synthetic peptide of human GADL1
Formulation:	pH7.4 PBS, 0.05% NaN <sub>3</sub> , 40% Glycerol
Concentration:	lot specific
Purification:	Antigen affinity purification
Conjugation:	Unconjugated
Storage:	Store at -20°C.
Stability:	1 year
Predicted Protein Size:	59 kDa
Gene Name:	glutamate decarboxylase like 1
Database Link:	<a href="#">Entrez Gene 339896 Human Q6ZQY3</a>
Background:	May catalyze the decarboxylation of aspartate, cysteine sulfinic acid, and cysteic acid to beta-alanine, hypotaurine and taurine, respectively. Does not exhibit any decarboxylation activity toward glutamate.
Synonyms:	MGC138191



[View online »](#)

**Product images:**

Gel: 8%SDS-PAGE

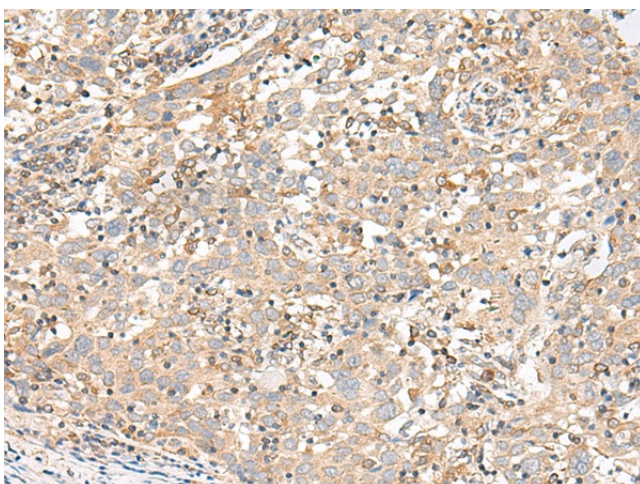
Lysate: 40  $\mu$ g

Lane 1-2: 293T and K562 cell lysates

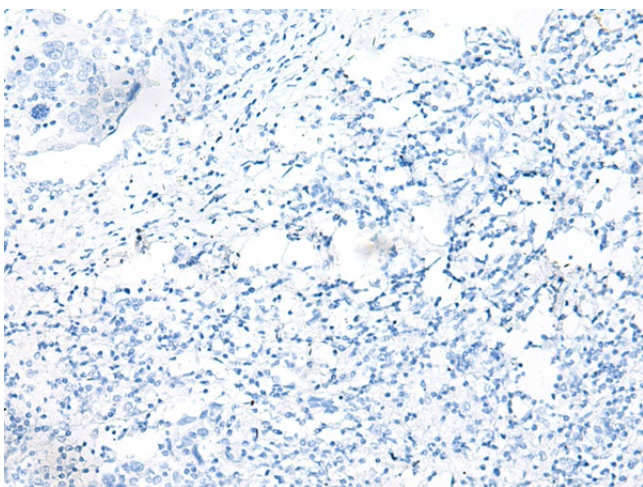
Primary antibody: TA368350 (GADL1 Antibody) at dilution 1/300

Secondary antibody: Goat anti rabbit IgG at 1/8000 dilution

Exposure time: 10 seconds



Immunohistochemistry of paraffin-embedded Human cervical cancer tissue using TA368350 (GADL1 Antibody) at dilution 1/30 (Original magnification:  $\times 200$ )



Immunohistochemistry of paraffin-embedded Human cervical cancer tissue using TA368350 (GADL1 Antibody) at dilution 1/30, treated with synthetic peptide. (Original magnification: ×200)