

## Product datasheet for **TA368345S**

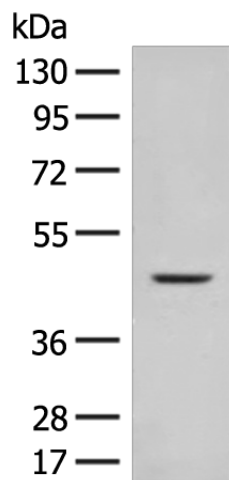
### FUT10 Rabbit Polyclonal Antibody

#### Product data:

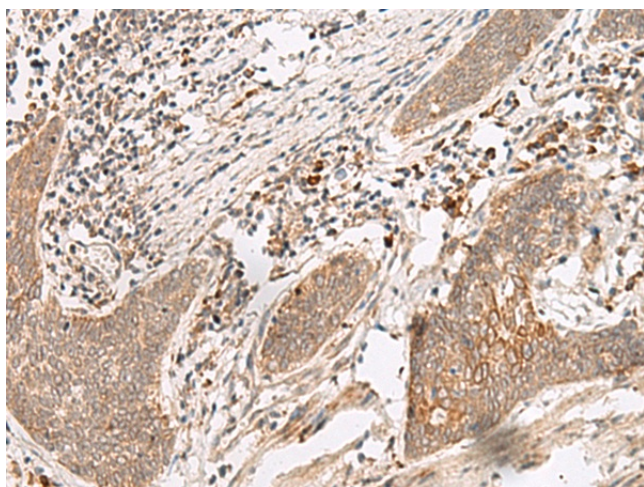
Product Type:	Primary Antibodies
Applications:	IHC, WB
Recommended Dilution:	WB: 500-2000 WB positive control: Mouse liver tissue lysate IHC: 40-200 Positive control: Human esophagus cancer Predicted cell location: Cytoplasm and Cell membrane
Reactivity:	Human, Mouse
Host:	Rabbit
Isotype:	IgG
Clonality:	Polyclonal
Immunogen:	Synthetic peptide of human FUT10
Formulation:	pH7.4 PBS, 0.05% NaN <sub>3</sub> , 40% Glycerol
Purification:	Antigen affinity purification
Conjugation:	Unconjugated
Storage:	Store at -20°C.
Stability:	1 year
Predicted Protein Size:	56 kDa
Gene Name:	fucosyltransferase 10
Database Link:	<a href="#">Entrez Gene 84750 Human Q6P4F1</a>
Background:	Probable fucosyltransferase.
Synonyms:	Fuc-TX; FucT-X; MGC11141



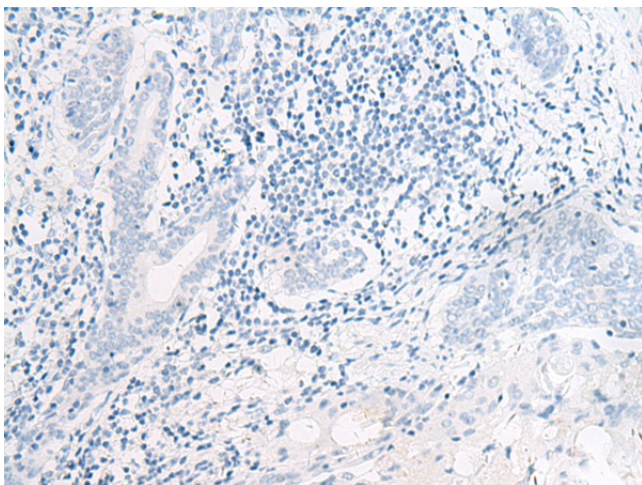
[View online »](#)

**Product images:**

Gel: 8%SDS-PAGE  
Lysate: 40  $\mu$ g  
Lane: Mouse liver tissue lysate  
Primary antibody: [TA368345] (FUT10 Antibody)  
at dilution 1/450  
Secondary antibody: Goat anti rabbit IgG at  
1/8000 dilution  
Exposure time: 1 minute



Immunohistochemistry of paraffin-embedded  
Human esophagus cancer tissue using  
[TA368345] (FUT10 Antibody) at dilution 1/45  
(Original magnification:  $\times$ 200)



Immunohistochemistry of paraffin-embedded Human esophagus cancer tissue using [TA368345] (FUT10 Antibody) at dilution 1/45, treated with synthetic peptide. (Original magnification: ×200)