

Product datasheet for **TA368341**

Phospholamban (PLN) Rabbit Polyclonal Antibody

Product data:

Product Type:	Primary Antibodies
Applications:	IHC, WB
Recommended Dilution:	WB: 500-2000 WB positive control: Mouse heart tissue, Human heart tissue, Rat heart tissue lysates IHC: 25-50 Positive control: Human brain Predicted cell location: Cytoplasm
Reactivity:	Human, Mouse, Rat
Host:	Rabbit
Isotype:	IgG
Clonality:	Polyclonal
Immunogen:	Synthetic peptide of human PLN
Formulation:	pH7.4 PBS, 0.05% NaN ₃ , 40% Glycerol
Concentration:	lot specific
Purification:	Antigen affinity purification
Conjugation:	Unconjugated
Storage:	Store at -20°C.
Stability:	1 year
Predicted Protein Size:	6 kDa
Gene Name:	phospholamban
Database Link:	Entrez Gene 5350 Human P26678



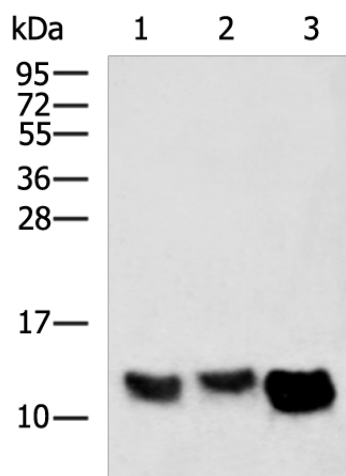
[View online »](#)

Background:

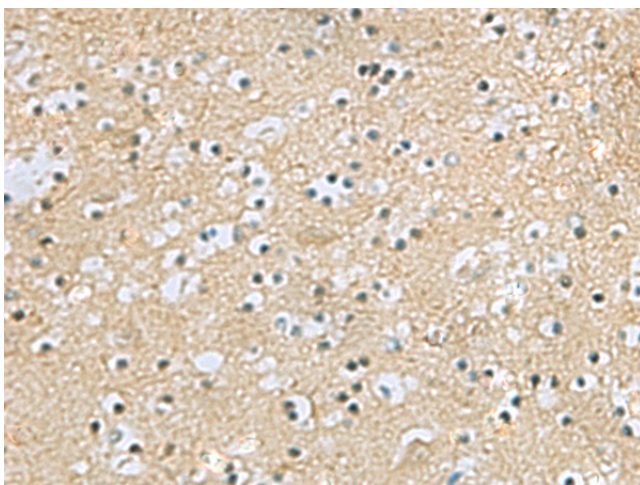
The protein encoded by this gene is found as a pentamer and is a major substrate for the cAMP-dependent protein kinase in cardiac muscle. The encoded protein is an inhibitor of cardiac muscle sarcoplasmic reticulum Ca(2+)-ATPase in the unphosphorylated state, but inhibition is relieved upon phosphorylation of the protein. The subsequent activation of the Ca(2+) pump leads to enhanced muscle relaxation rates, thereby contributing to the inotropic response elicited in heart by beta-agonists. The encoded protein is a key regulator of cardiac diastolic function. Mutations in this gene are a cause of inherited human dilated cardiomyopathy with refractory congestive heart failure, and also familial hypertrophic cardiomyopathy.

Synonyms:

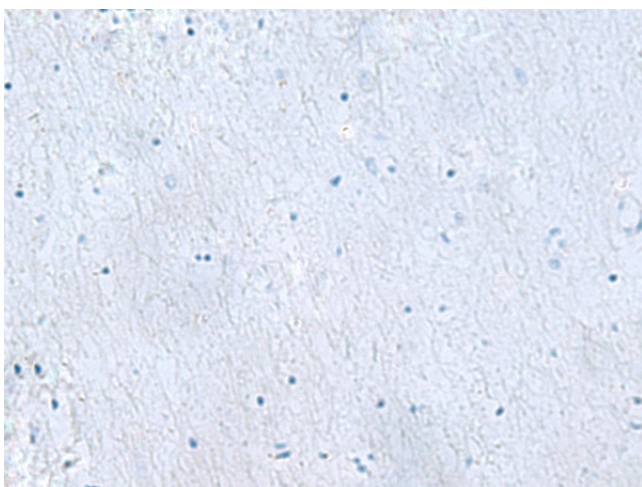
CMD1P; phospholamban; PLB

Product images:

Gel: 12%SDS-PAGE
Lysate: 40 µg
Lane 1-3: Mouse heart tissue
Human heart tissue
Rat heart tissue lysates
Primary antibody: TA368341 (PLN Antibody) at dilution 1/500
Secondary antibody: Goat anti rabbit IgG at 1/5000 dilution
Exposure time: 10 seconds



Immunohistochemistry of paraffin-embedded Human brain tissue using TA368341 (PLN Antibody) at dilution 1/25 (Original magnification: ×200)



Immunohistochemistry of paraffin-embedded Human brain tissue using TA368341 (PLN Antibody) at dilution 1/25, treated with synthetic peptide. (Original magnification: $\times 200$)