

## Product datasheet for **TA368308**

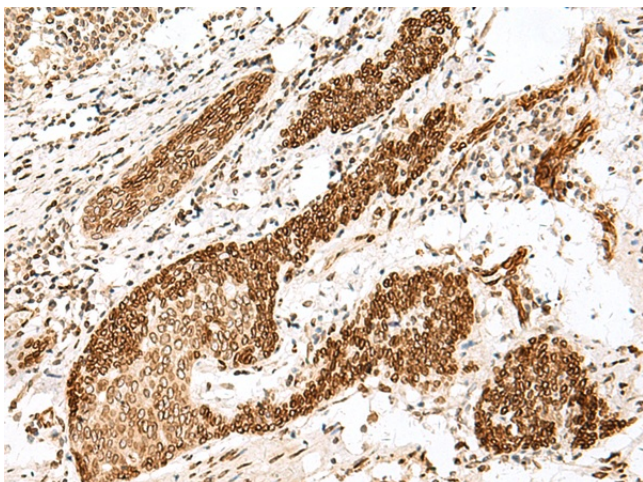
### FANCB Rabbit Polyclonal Antibody

#### Product data:

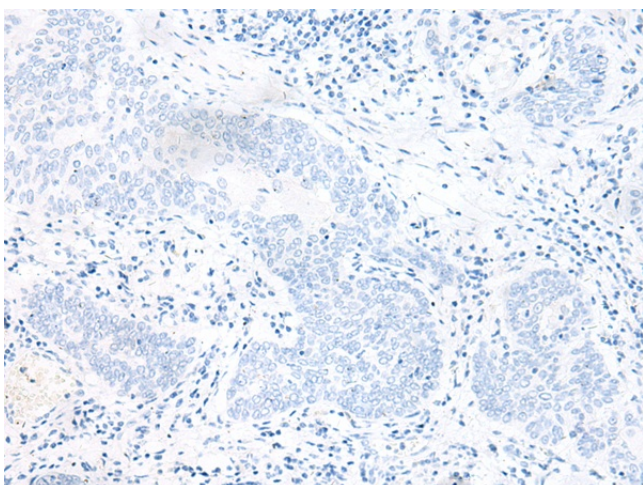
|                       |                                                                                                                                                                                                                                                                                  |
|-----------------------|----------------------------------------------------------------------------------------------------------------------------------------------------------------------------------------------------------------------------------------------------------------------------------|
| Product Type:         | Primary Antibodies                                                                                                                                                                                                                                                               |
| Applications:         | IHC                                                                                                                                                                                                                                                                              |
| Recommended Dilution: | IHC: 30-150<br>Positive control: Human esophagus cancer<br>Predicted cell location: Nucleus                                                                                                                                                                                      |
| Reactivity:           | Human                                                                                                                                                                                                                                                                            |
| Host:                 | Rabbit                                                                                                                                                                                                                                                                           |
| Isotype:              | IgG                                                                                                                                                                                                                                                                              |
| Clonality:            | Polyclonal                                                                                                                                                                                                                                                                       |
| Immunogen:            | Synthetic peptide of human FANCB                                                                                                                                                                                                                                                 |
| Formulation:          | pH7.4 PBS, 0.05% NaN <sub>3</sub> , 40% Glycerol                                                                                                                                                                                                                                 |
| Concentration:        | lot specific                                                                                                                                                                                                                                                                     |
| Purification:         | Antigen affinity purification                                                                                                                                                                                                                                                    |
| Conjugation:          | Unconjugated                                                                                                                                                                                                                                                                     |
| Storage:              | Store at -20°C.                                                                                                                                                                                                                                                                  |
| Stability:            | 1 year                                                                                                                                                                                                                                                                           |
| Gene Name:            | Fanconi anemia complementation group B                                                                                                                                                                                                                                           |
| Database Link:        | <a href="#">Entrez Gene 2187 Human Q8NB91</a>                                                                                                                                                                                                                                    |
| Background:           | This gene encodes a member of the Fanconi anemia complementation group B. This protein is assembled into a nucleoprotein complex that is involved in the repair of DNA lesions. Mutations in this gene can cause chromosome instability and VACTERL syndrome with hydrocephalus. |
| Synonyms:             | FA2; FAAP90; FAAP95; FAB; FACB; FLJ34064                                                                                                                                                                                                                                         |



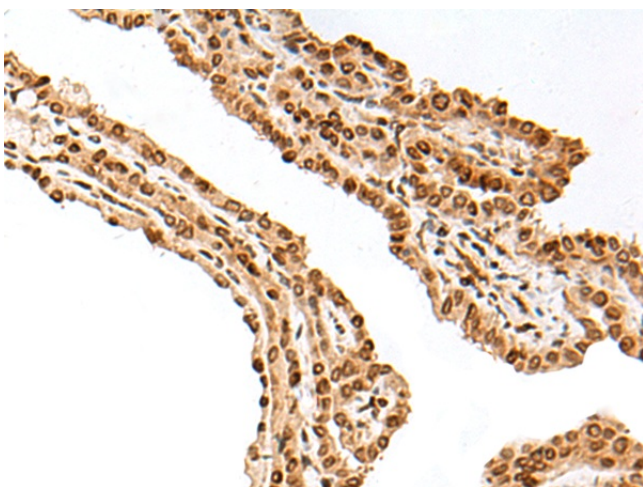
[View online »](#)

**Product images:**

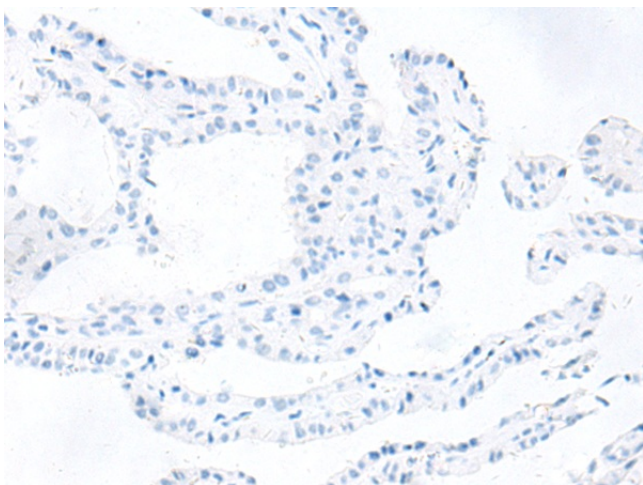
Immunohistochemistry of paraffin-embedded Human esophagus cancer tissue using TA368308 (FANCB Antibody) at dilution 1/25 (Original magnification:  $\times 200$ )



Immunohistochemistry of paraffin-embedded Human esophagus cancer tissue using TA368308 (FANCB Antibody) at dilution 1/25, treated with synthetic peptide. (Original magnification:  $\times 200$ )



Immunohistochemistry of paraffin-embedded Human thyroid cancer tissue using TA368308 (FANCB Antibody) at dilution 1/25 (Original magnification:  $\times 200$ )



Immunohistochemistry of paraffin-embedded Human thyroid cancer tissue using TA368308 (FANCB Antibody) at dilution 1/25, treated with synthetic peptide. (Original magnification:  $\times 200$ )