

Product datasheet for **TA368307**

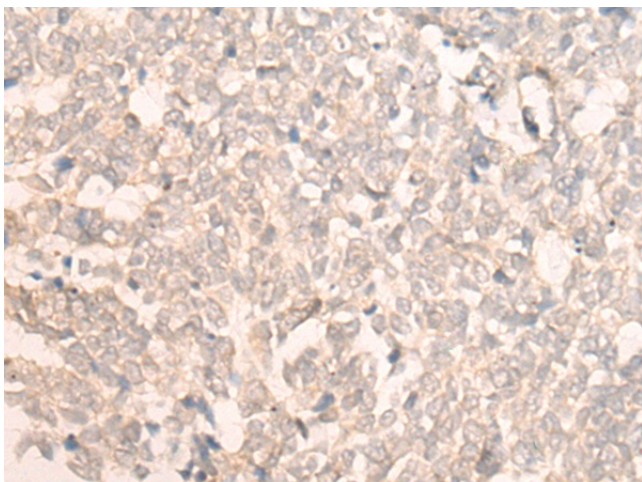
FAN1 Rabbit Polyclonal Antibody

Product data:

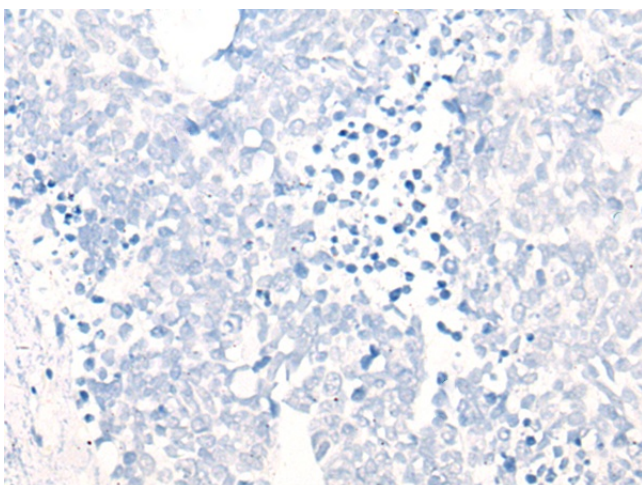
Product Type:	Primary Antibodies
Applications:	IHC
Recommended Dilution:	IHC: 30-150 Positive control: Human lung cancer Predicted cell location: Nucleus
Reactivity:	Human
Host:	Rabbit
Isotype:	IgG
Clonality:	Polyclonal
Immunogen:	Synthetic peptide of human FAN1
Formulation:	pH7.4 PBS, 0.05% NaN ₃ , 40% Glycerol
Concentration:	lot specific
Purification:	Antigen affinity purification
Conjugation:	Unconjugated
Storage:	Store at -20°C.
Stability:	1 year
Gene Name:	FANCD2/FANCI-associated nuclease 1
Database Link:	Entrez Gene 22909 Human Q9Y2M0
Background:	This gene plays a role in DNA interstrand cross-link repair and encodes a protein with 5' flap endonuclease and 5'-3' exonuclease activity. Mutations in this gene cause karyomegalic interstitial nephritis. Alternatively spliced transcript variants encoding distinct isoforms have been described.
Synonyms:	6030441H18Rik; Mtmr15



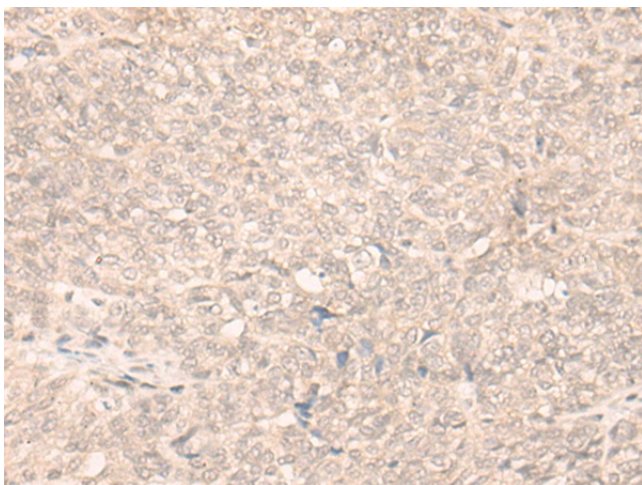
[View online »](#)

Product images:

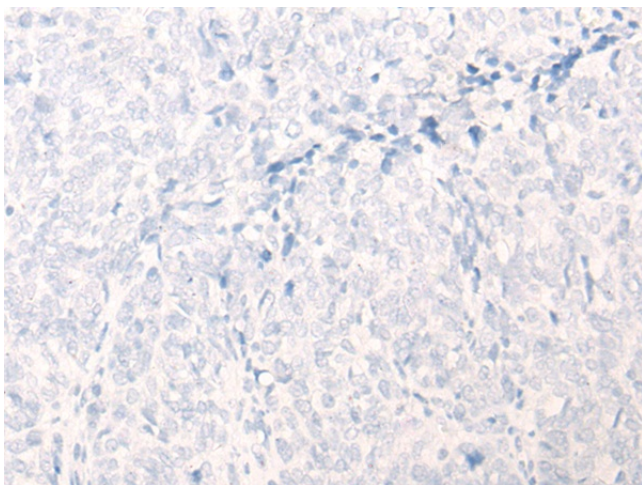
Immunohistochemistry of paraffin-embedded Human lung cancer tissue using TA368307 (FAN1 Antibody) at dilution 1/30 (Original magnification: ×200)



Immunohistochemistry of paraffin-embedded Human lung cancer tissue using TA368307 (FAN1 Antibody) at dilution 1/30, treated with synthetic peptide. (Original magnification: ×200)



Immunohistochemistry of paraffin-embedded Human ovarian cancer tissue using TA368307 (FAN1 Antibody) at dilution 1/30 (Original magnification: $\times 200$)



Immunohistochemistry of paraffin-embedded Human ovarian cancer tissue using TA368307 (FAN1 Antibody) at dilution 1/30, treated with synthetic peptide. (Original magnification: $\times 200$)