

Product datasheet for **TA368306**

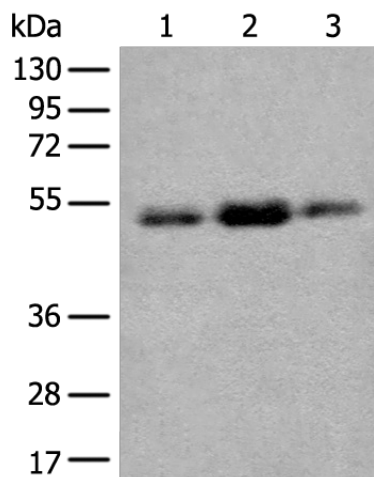
FAM98A Rabbit Polyclonal Antibody

Product data:

Product Type:	Primary Antibodies
Applications:	IHC, WB
Recommended Dilution:	WB: 200-1000 WB positive control: Human breast cancer tissue□Human liver cancer tissue and Human lung adenocarcinoma tissue lysates IHC: 30-150 Positive control: Human thyroid cancer Predicted cell location: Cytoplasm
Reactivity:	Human, Mouse, Rat
Host:	Rabbit
Isotype:	IgG
Clonality:	Polyclonal
Immunogen:	Synthetic peptide of human FAM98A
Formulation:	pH7.4 PBS, 0.05% NaN ₃ , 40% Glycerol
Concentration:	lot specific
Purification:	Antigen affinity purification
Conjugation:	Unconjugated
Storage:	Store at -20°C.
Stability:	1 year
Predicted Protein Size:	55 kDa
Gene Name:	family with sequence similarity 98 member A
Database Link:	Entrez Gene 25940 Human Q8NCA5
Background:	FAM98A belongs to the FAM98 family. The function of FAM98A remains unknown.
Synonyms:	DKFZP564F0522; DKFZp686O03192



[View online »](#)

Product images:


Gel: 8%SDS-PAGE

Lysate: 40 µg

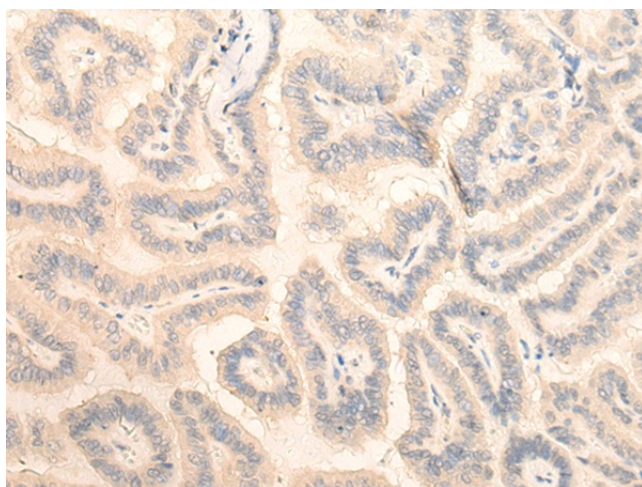
Lane 1-3: Human breast cancer tissue

Human liver cancer tissue and Human lung adenocarcinoma tissue lysates

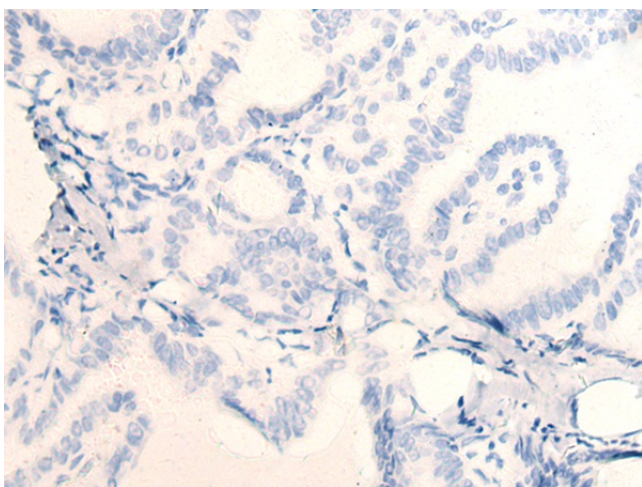
Primary antibody: TA368306 (FAM98A Antibody) at dilution 1/300

Secondary antibody: Goat anti rabbit IgG at 1/8000 dilution

Exposure time: 10 minutes



Immunohistochemistry of paraffin-embedded Human thyroid cancer tissue using TA368306 (FAM98A Antibody) at dilution 1/20 (Original magnification: ×200)



Immunohistochemistry of paraffin-embedded Human thyroid cancer tissue using TA368306 (FAM98A Antibody) at dilution 1/20, treated with synthetic peptide. (Original magnification: $\times 200$)