

Product datasheet for **TA368304**

LRATD2 Rabbit Polyclonal Antibody

Product data:

Product Type:	Primary Antibodies
Applications:	IHC, WB
Recommended Dilution:	WB: 500-2000 WB positive control: HUVEC and PC3 cell lysates IHC: 50-300 Positive control: Human esophagus cancer Predicted cell location: Cytoplasm and Nucleus
Reactivity:	Human
Host:	Rabbit
Isotype:	IgG
Clonality:	Polyclonal
Immunogen:	Synthetic peptide of human LRATD2
Formulation:	pH7.4 PBS, 0.05% NaN ₃ , 40% Glycerol
Concentration:	lot specific
Purification:	Antigen affinity purification
Conjugation:	Unconjugated
Storage:	Store at -20°C.
Stability:	1 year
Predicted Protein Size:	34 kDa
Gene Name:	family with sequence similarity 84 member B
Database Link:	Entrez Gene 157638 Human Q96KN1



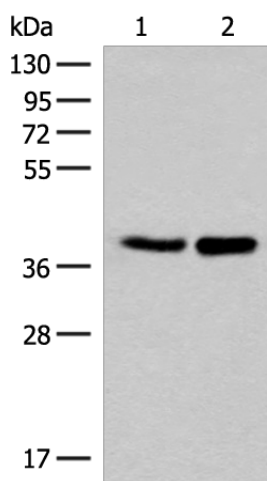
[View online »](#)

Background:

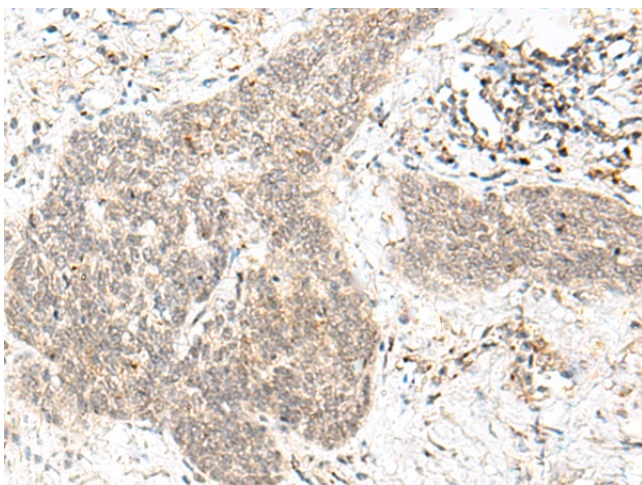
FAM84B (family with sequence similarity 84, member B), also known as NSE2 or BCMP101, is a 310 amino acid protein that is expressed in esophageal squamous cell carcinomas, suggesting a role in tumor development and metastasis. The gene encoding FAM84B maps to human chromosome 8, which consists of nearly 146 million base pairs, houses more than 800 genes and is associated with a variety of diseases and malignancies. Schizophrenia, bipolar disorder, trisomy 8, Pfeiffer syndrome, congenital hypothyroidism, Waardenburg syndrome and some leukemias and lymphomas are thought to occur as a result of defects in specific genes that map to chromosome 8.

Synonyms:

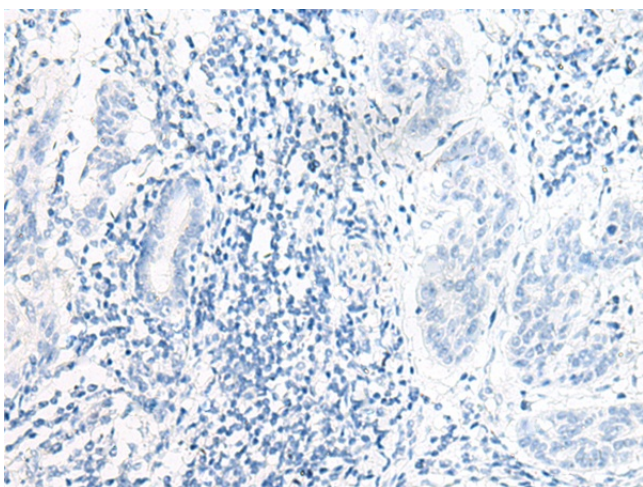
BCMP101; NSE2

Product images:

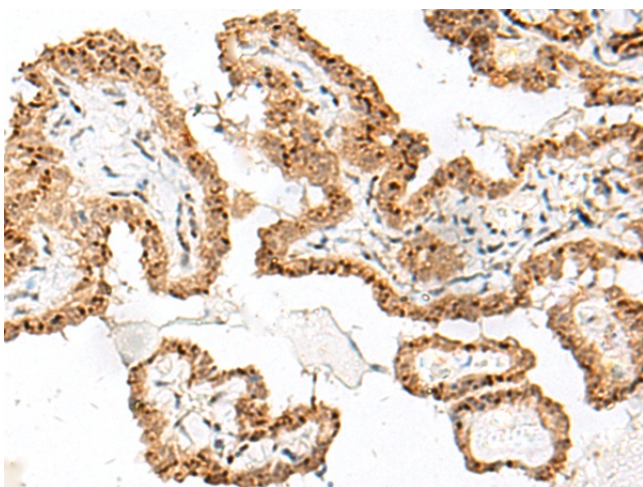
Gel: 8%SDS-PAGE
Lysate: 40 µg
Lane 1-2: HUVEC and PC3 cell lysates
Primary antibody: TA368304 (LRATD2 Antibody) at dilution 1/400
Secondary antibody: Goat anti rabbit IgG at 1/8000 dilution
Exposure time: 30 seconds



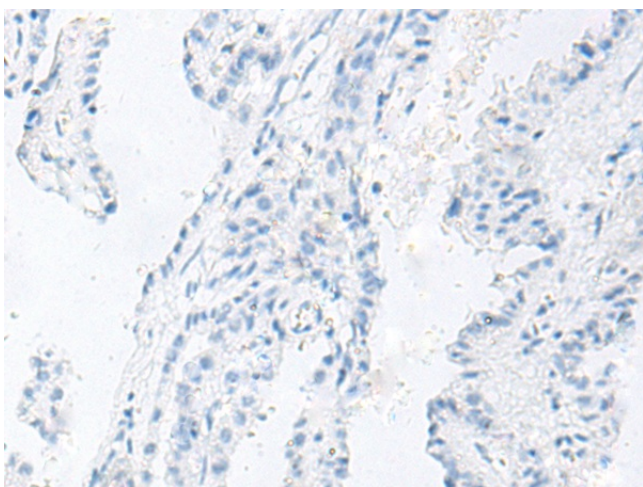
Immunohistochemistry of paraffin-embedded Human esophagus cancer tissue using TA368304 (LRATD2 Antibody) at dilution 1/70 (Original magnification: ×200)



Immunohistochemistry of paraffin-embedded Human esophagus cancer tissue using TA368304 (LRATD2 Antibody) at dilution 1/70, treated with synthetic peptide. (Original magnification: $\times 200$)



Immunohistochemistry of paraffin-embedded Human thyroid cancer tissue using TA368304 (LRATD2 Antibody) at dilution 1/70 (Original magnification: $\times 200$)



Immunohistochemistry of paraffin-embedded Human thyroid cancer tissue using TA368304 (LRATD2 Antibody) at dilution 1/70, treated with synthetic peptide. (Original magnification: $\times 200$)