

Product datasheet for **TA368299**

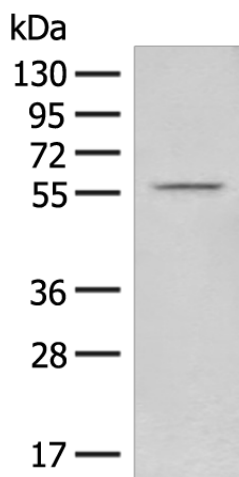
NALF2 Rabbit Polyclonal Antibody

Product data:

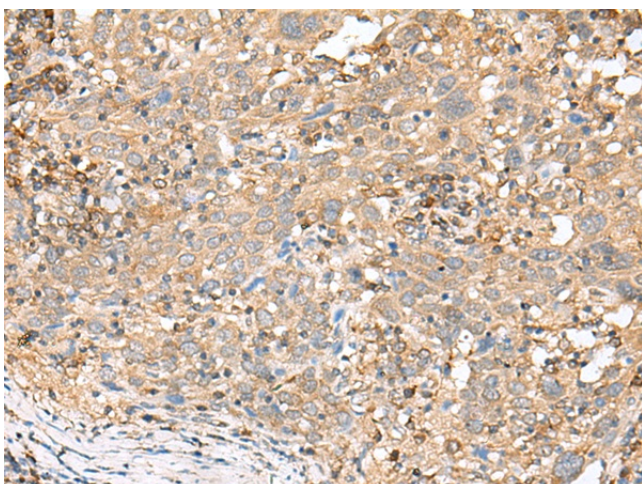
Product Type:	Primary Antibodies
Applications:	IHC, WB
Recommended Dilution:	WB: 200-1000 WB positive control: Human heart tissue lysate IHC: 40-200 Positive control: Human cervical cancer Predicted cell location: Cell membrane
Reactivity:	Human
Host:	Rabbit
Isotype:	IgG
Clonality:	Polyclonal
Immunogen:	Synthetic peptide of human FAM155B
Formulation:	pH7.4 PBS, 0.05% NaN ₃ , 40% Glycerol
Concentration:	lot specific
Purification:	Antigen affinity purification
Conjugation:	Unconjugated
Storage:	Store at -20°C.
Stability:	1 year
Predicted Protein Size:	53 kDa
Gene Name:	family with sequence similarity 155 member B
Database Link:	Entrez Gene 27112 Human O75949
Background:	This gene encodes a product belonging to a family of proteins with unknown function. The presence of two transmembrane domains suggests that this protein is a multi-pass membrane protein.
Synonyms:	bB57D9.1; CXorf63; TED; TMEM28



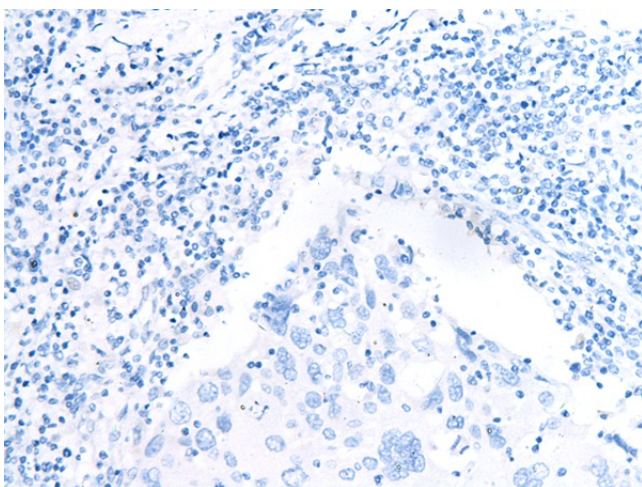
[View online »](#)

Product images:


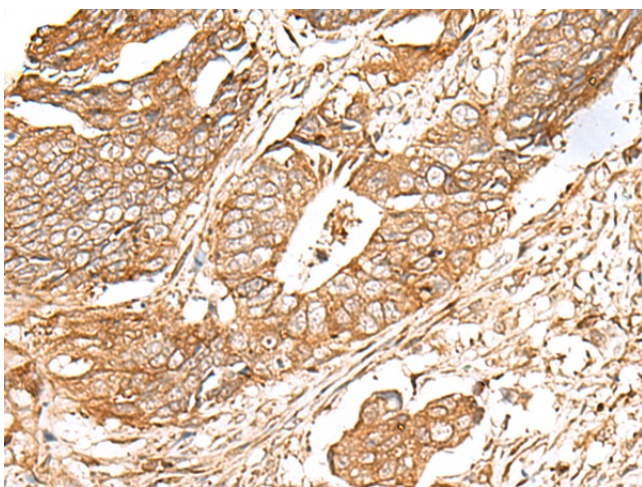
Gel: 8%SDS-PAGE
 Lysate: 40 µg
 Lane: Human heart tissue lysate
 Primary antibody: TA368299 (FAM155B Antibody)
 at dilution 1/250
 Secondary antibody: Goat anti rabbit IgG at
 1/8000 dilution
 Exposure time: 1 minute



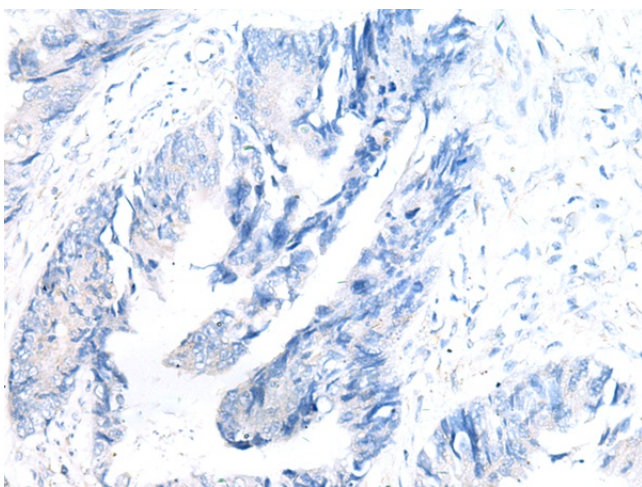
Immunohistochemistry of paraffin-embedded
 Human cervical cancer tissue using TA368299
 (FAM155B Antibody) at dilution 1/35 (Original
 magnification: ×200)



Immunohistochemistry of paraffin-embedded Human cervical cancer tissue using TA368299 (FAM155B Antibody) at dilution 1/35, treated with synthetic peptide. (Original magnification: ×200)



Immunohistochemistry of paraffin-embedded Human colorectal cancer tissue using TA368299 (FAM155B Antibody) at dilution 1/35 (Original magnification: ×200)



Immunohistochemistry of paraffin-embedded Human colorectal cancer tissue using TA368299 (FAM155B Antibody) at dilution 1/35, treated with synthetic peptide. (Original magnification: ×200)