

## Product datasheet for **TA368297**

### **FAM111B Rabbit Polyclonal Antibody**

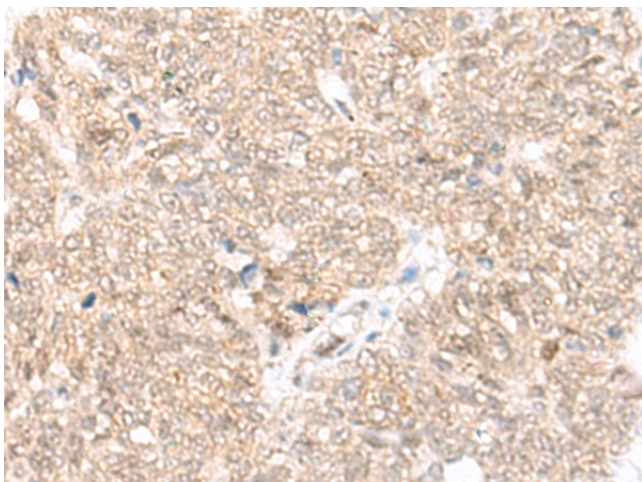
#### **Product data:**

|                       |   |
|-----------------------|---|
| Product Type:         | Primary Antibodies  |
| Applications:         | IHC   |
| Recommended Dilution: | IHC: 30-150<br>Positive control: Human ovarian cancer<br>Predicted cell location: Nucleus   |
| Reactivity:           | Human   |
| Host:                 | Rabbit  |
| Isotype:              | IgG   |
| Clonality:            | Polyclonal  |
| Immunogen:            | Synthetic peptide of human FAM111B  |
| Formulation:          | pH7.4 PBS, 0.05% NaN <sub>3</sub> , 40% Glycerol  |
| Concentration:        | lot specific  |
| Purification:         | Antigen affinity purification   |
| Conjugation:          | Unconjugated  |
| Storage:              | Store at -20°C.   |
| Stability:            | 1 year  |
| Gene Name:            | family with sequence similarity 111 member B  |
| Database Link:        | <a href="#">Entrez Gene 374393 Human Q6SJ93</a>   |
| Background:           | This gene encodes a protein with a trypsin-like cysteine/serine peptidase domain in the C-terminus. Mutations in this gene are associated with an autosomal dominant form of hereditary fibrosing poikiloderma (HFP). Affected individuals display mottled pigmentation, telangiectasia, epidermal atrophy, tendon contractures, and progressive pulmonary fibrosis. Alternative splicing results in multiple transcript variants encoding distinct isoforms. A paralog of this gene which also has a trypsin-like peptidase domain, FAM111A, is located only 16 kb from this gene on human chromosome 11q12.1. |
| Synonyms:             | CANP  |

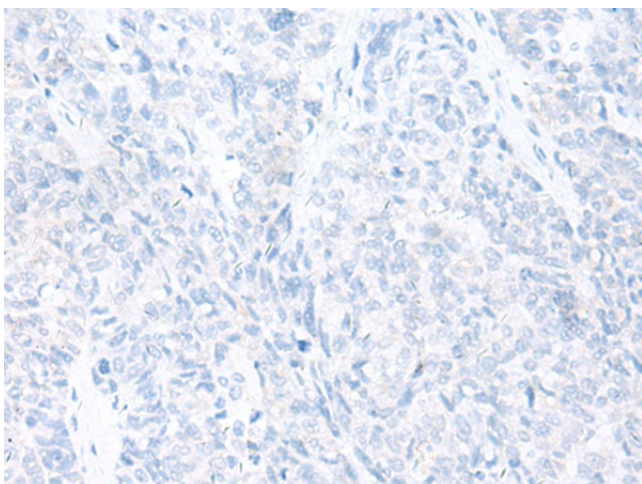


[View online »](#)

## Product images:



Immunohistochemistry of paraffin-embedded Human ovarian cancer tissue using TA368297 (FAM111B Antibody) at dilution 1/25 (Original magnification: ×200)



Immunohistochemistry of paraffin-embedded Human ovarian cancer tissue using TA368297 (FAM111B Antibody) at dilution 1/25, treated with synthetic peptide. (Original magnification: ×200)