

## Product datasheet for **TA368292**

### **METT11D1 (METTL17) Rabbit Polyclonal Antibody**

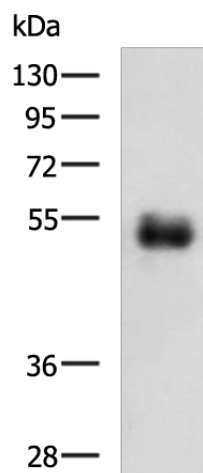
#### **Product data:**

Product Type:	Primary Antibodies
Applications:	IHC, WB
Recommended Dilution:	WB: 500-2000 WB positive control: Human colorectal cancer tissue lysate IHC: 50-300 Positive control: Human tonsil Predicted cell location: Cytoplasm
Reactivity:	Human, Mouse
Host:	Rabbit
Isotype:	IgG
Clonality:	Polyclonal
Immunogen:	Synthetic peptide of human METTL17
Formulation:	pH7.4 PBS, 0.05% NaN <sub>3</sub> , 40% Glycerol
Concentration:	lot specific
Purification:	Antigen affinity purification
Conjugation:	Unconjugated
Storage:	Store at -20°C.
Stability:	1 year
Predicted Protein Size:	51 kDa
Gene Name:	methyltransferase like 17
Database Link:	<a href="#">Entrez Gene 64745 Human Q9H7H0</a>
Background:	May be a component of the mitochondrial small ribosomal subunit.
Synonyms:	METT11D1



[View online »](#)

## Product images:



Gel: 8%SDS-PAGE

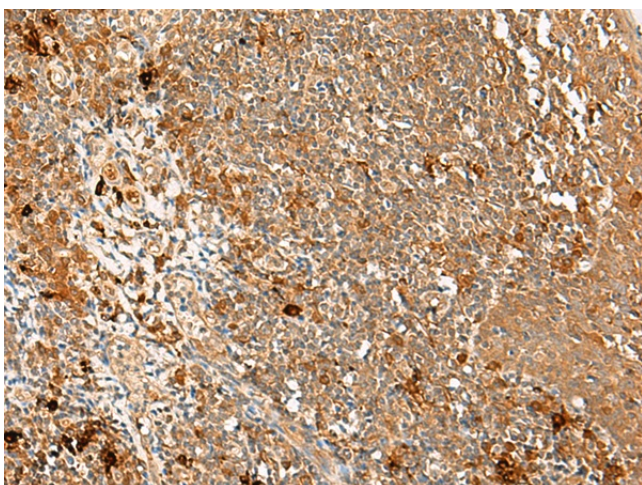
Lysate: 40 µg

Lane: Human colorectal cancer tissue lysate

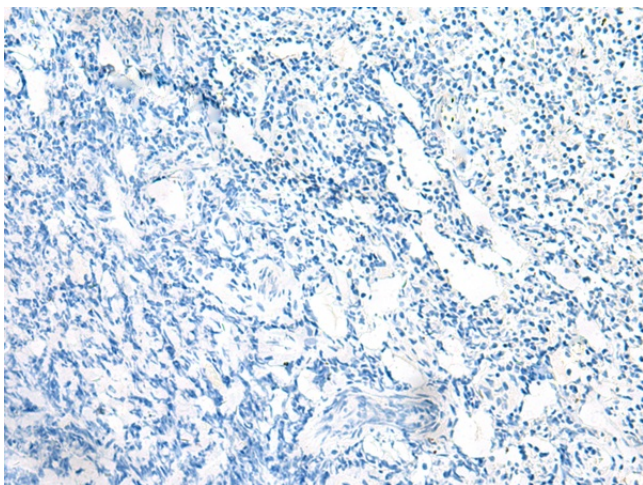
Primary antibody: TA368292 (METTL17 Antibody)  
at dilution 1/700

Secondary antibody: Goat anti rabbit IgG at  
1/5000 dilution

Exposure time: 1 minute



Immunohistochemistry of paraffin-embedded  
Human tonsil tissue using TA368292 (METTL17  
Antibody) at dilution 1/60 (Original magnification:  
×200)



Immunohistochemistry of paraffin-embedded Human tonsil tissue using TA368292 (METTL17 Antibody) at dilution 1/60, treated with synthetic peptide. (Original magnification: ×200)