

## Product datasheet for **TA368288S**

### **PATJ Rabbit Polyclonal Antibody**

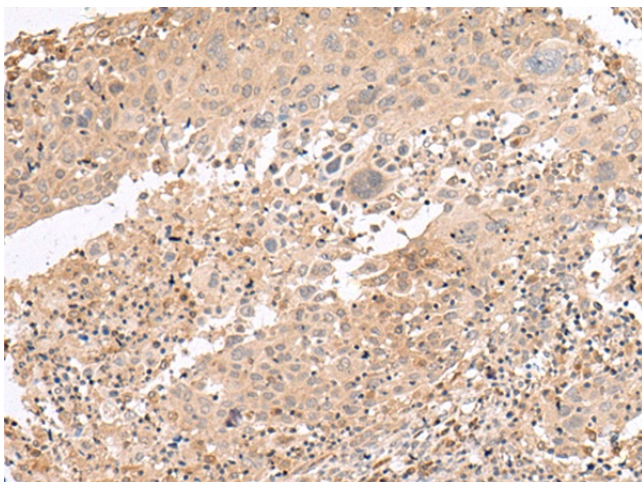
#### **Product data:**

Product Type:	Primary Antibodies
Applications:	IHC
Recommended Dilution:	IHC: 40-200 Positive control: Human cervical cancer Predicted cell location: Cytoplasm and Cell membrane
Reactivity:	Human
Host:	Rabbit
Isotype:	IgG
Clonality:	Polyclonal
Immunogen:	Synthetic peptide of human PATJ
Formulation:	pH7.4 PBS, 0.05% NaN <sub>3</sub> , 40% Glycerol
Purification:	Antigen affinity purification
Conjugation:	Unconjugated
Storage:	Store at -20°C.
Stability:	1 year
Gene Name:	PATJ, crumbs cell polarity complex component
Database Link:	<a href="#">Entrez Gene 10207 Human Q8NI35</a>

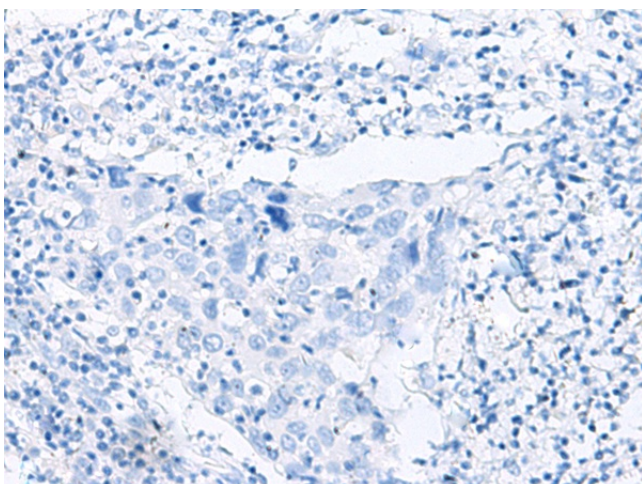
**Background:** This gene encodes a protein with multiple PDZ domains. PDZ domains mediate protein-protein interactions, and proteins with multiple PDZ domains often organize multimeric complexes at the plasma membrane. This protein localizes to tight junctions and to the apical membrane of epithelial cells. A similar protein in Drosophila is a scaffolding protein which tethers several members of a multimeric signaling complex in photoreceptors.



[View online »](#)

**Product images:**

Immunohistochemistry of paraffin-embedded Human cervical cancer tissue using [TA368288] (PATJ Antibody) at dilution 1/45 (Original magnification:  $\times 200$ )



Immunohistochemistry of paraffin-embedded Human cervical cancer tissue using [TA368288] (PATJ Antibody) at dilution 1/45, treated with synthetic peptide. (Original magnification:  $\times 200$ )