

Product datasheet for **TA368287**

NIPSNAP2 Rabbit Polyclonal Antibody

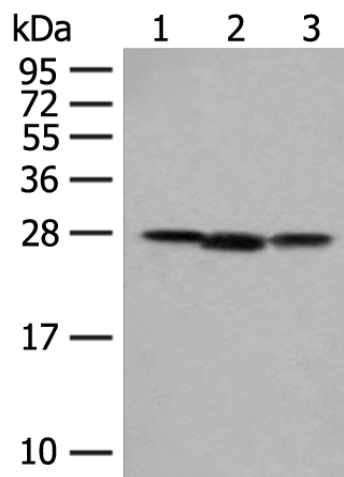
Product data:

Product Type:	Primary Antibodies
Applications:	IHC, WB
Recommended Dilution:	WB: 200-1000 WB positive control: Mouse liver tissue, Human fetal liver tissue, HEPG2 cell lysates IHC: 30-150 Positive control: Human cervical cancer Predicted cell location: Cytoplasm
Reactivity:	Human, Mouse
Host:	Rabbit
Isotype:	IgG
Clonality:	Polyclonal
Immunogen:	Synthetic peptide of human NIPSNAP2
Formulation:	pH7.4 PBS, 0.05% NaN ₃ , 40% Glycerol
Concentration:	lot specific
Purification:	Antigen affinity purification
Conjugation:	Unconjugated
Storage:	Store at -20°C.
Stability:	1 year
Predicted Protein Size:	34 kDa
Gene Name:	glioblastoma amplified sequence
Database Link:	Entrez Gene 2631 Human O75323
Background:	This gene encodes a member of the NipSnap family of proteins that may be involved in vesicular transport. The encoded protein is localized to mitochondria and plays a role in oxidative phosphorylation. A pseudogene of this gene is located on the long arm of chromosome 2. Alternatively spliced transcript variants encoding multiple isoforms have been observed for this gene.
Synonyms:	NIPSNAP2

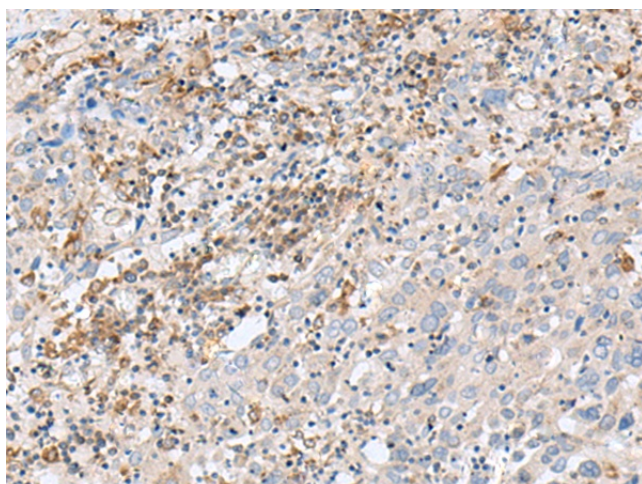


[View online »](#)

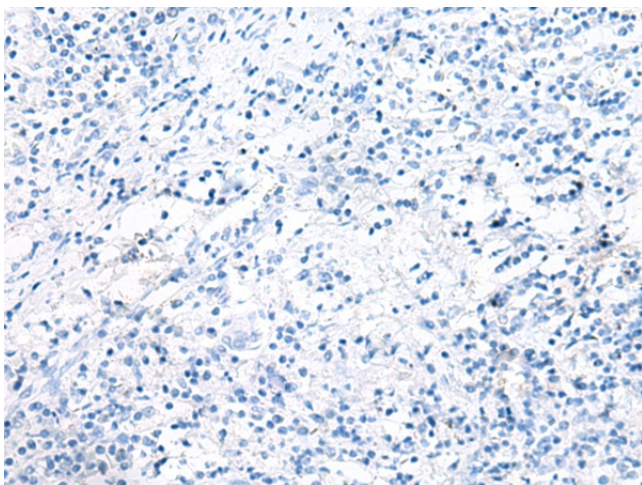
Product images:



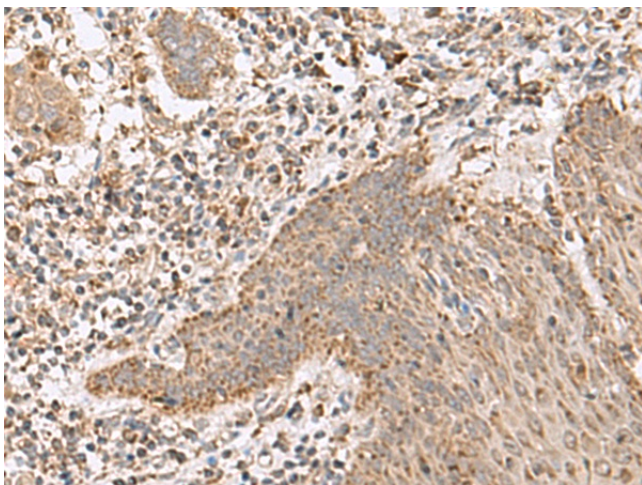
Gel: 12%SDS-PAGE
 Lysate: 40 µg
 Lane 1-3: Mouse liver tissue
 Human fetal liver tissue
 HEPG2 cell lysates
 Primary antibody: TA368287 (NIPSNAP2
 Antibody) at dilution 1/300
 Secondary antibody: Goat anti rabbit IgG at
 1/8000 dilution
 Exposure time: 1 second



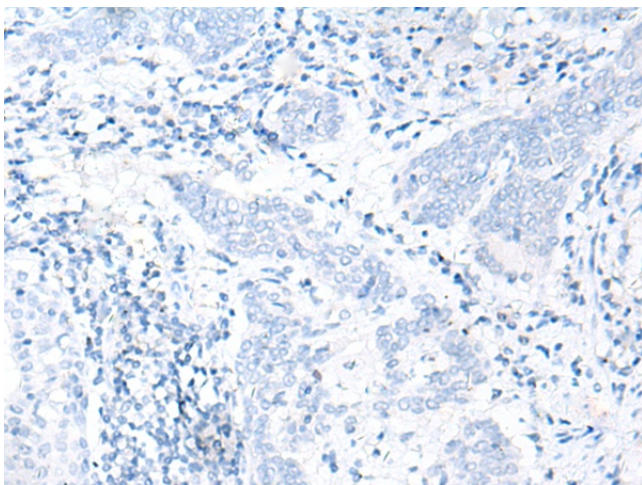
Immunohistochemistry of paraffin-embedded
 Human cervical cancer tissue using TA368287
 (NIPSNAP2 Antibody) at dilution 1/30 (Original
 magnification: ×200)



Immunohistochemistry of paraffin-embedded Human cervical cancer tissue using TA368287 (NIPSNAP2 Antibody) at dilution 1/30, treated with synthetic peptide. (Original magnification: $\times 200$)



Immunohistochemistry of paraffin-embedded Human esophagus cancer tissue using TA368287 (NIPSNAP2 Antibody) at dilution 1/30 (Original magnification: $\times 200$)



Immunohistochemistry of paraffin-embedded Human esophagus cancer tissue using TA368287 (NIPSNAP2 Antibody) at dilution 1/30, treated with synthetic peptide. (Original magnification: $\times 200$)