

## Product datasheet for **TA368286S**

### **PAMM (FAM213A) Rabbit Polyclonal Antibody**

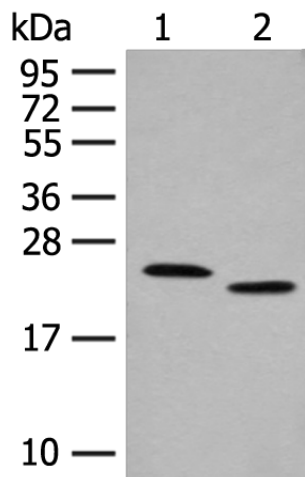
#### **Product data:**

Product Type:	Primary Antibodies
Applications:	WB
Recommended Dilution:	WB: 500-2000 WB positive control: Human fat tissue and A375 cell lysates
Reactivity:	Human, Mouse, Rat
Host:	Rabbit
Isotype:	IgG
Clonality:	Polyclonal
Immunogen:	Synthetic peptide of human PRXL2A
Formulation:	pH7.4 PBS, 0.05% NaN <sub>3</sub> , 40% Glycerol
Purification:	Antigen affinity purification
Conjugation:	Unconjugated
Storage:	Store at -20°C.
Stability:	1 year
Predicted Protein Size:	26 kDa
Gene Name:	family with sequence similarity 213 member A
Database Link:	<a href="#">Entrez Gene 84293 Human Q9BRX8</a>
Background:	Involved in redox regulation of the cell (PubMed:26438880, PubMed:19951071). Acts as an antioxidant (PubMed:19951071, PubMed:26438880). Inhibits TNFSF11-induced NFKB1 and JUN activation and osteoclast differentiation (PubMed:19951071). May affect bone resorption and help to maintain bone mass (PubMed:19951071). Acts as a negative regulator of macrophage-mediated inflammation by inhibiting macrophage production of inflammatory cytokines, probably through suppression of the MAPK signaling pathway (PubMed:26438880).
Synonyms:	5730469M10Rik; AU040822; Pamm; RGD1305689



[View online »](#)

## Product images:



Gel: 12%SDS-PAGE

Lysate: 40  $\mu$ g

Lane 1-2: Human fat tissue and A375 cell lysates  
Primary antibody: [TA368286] (PRXL2A Antibody)  
at dilution 1/400

Secondary antibody: Goat anti rabbit IgG at  
1/8000 dilution

Exposure time: 1 minute