

## Product datasheet for **TA368285S**

### Cirhin (UTP4) Rabbit Polyclonal Antibody

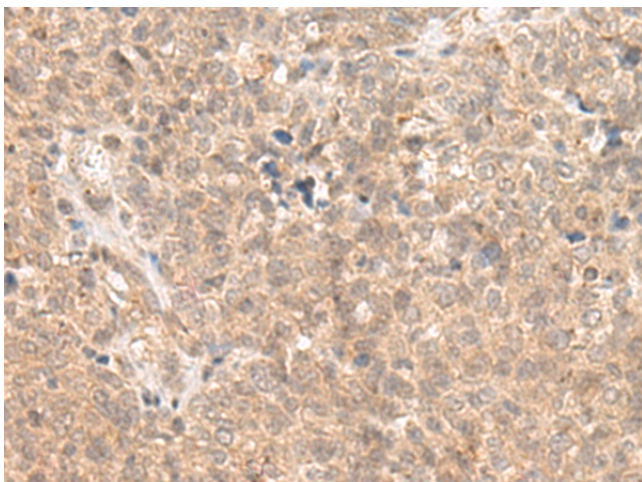
#### Product data:

Product Type:	Primary Antibodies
Applications:	IHC
Recommended Dilution:	IHC: 30-150 Positive control: Human ovarian cancer Predicted cell location: Nucleus
Reactivity:	Human
Host:	Rabbit
Isotype:	IgG
Clonality:	Polyclonal
Immunogen:	Synthetic peptide of human UTP4
Formulation:	pH7.4 PBS, 0.05% NaN <sub>3</sub> , 40% Glycerol
Purification:	Antigen affinity purification
Conjugation:	Unconjugated
Storage:	Store at -20°C.
Stability:	1 year
Gene Name:	UTP4, small subunit processome component
Database Link:	<a href="#">Entrez Gene 84916 Human Q969X6</a>

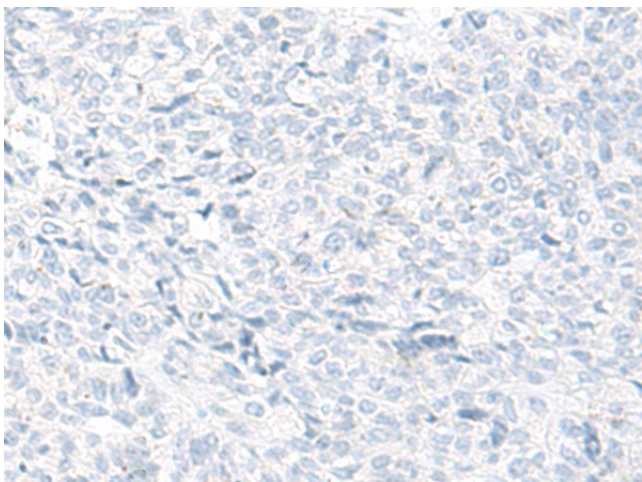
**Background:** This gene encodes a WD40-repeat-containing protein that is localized to the nucleolus. Mutation of this gene causes North American Indian childhood cirrhosis, a severe intrahepatic cholestasis that results in transient neonatal jaundice, and progresses to periportal fibrosis and cirrhosis in childhood and adolescence. Alternative splicing results in multiple transcript variants.



[View online »](#)

**Product images:**

Immunohistochemistry of paraffin-embedded Human ovarian cancer tissue using [TA368285] (UTP4 Antibody) at dilution 1/20 (Original magnification:  $\times 200$ )



Immunohistochemistry of paraffin-embedded Human ovarian cancer tissue using [TA368285] (UTP4 Antibody) at dilution 1/20, treated with synthetic peptide. (Original magnification:  $\times 200$ )