

Product datasheet for **TA368282**

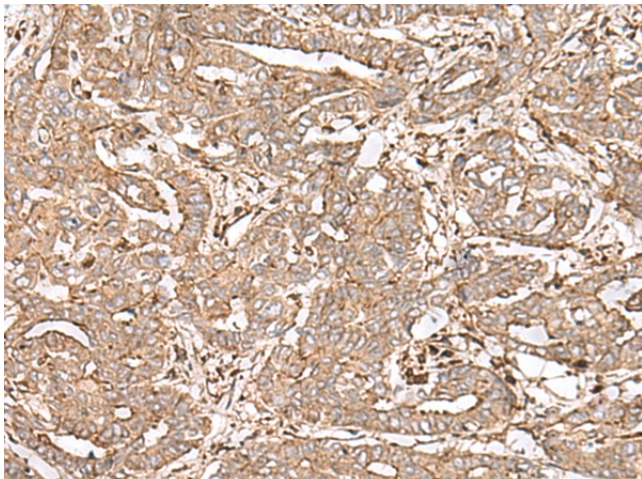
FAAP24 Rabbit Polyclonal Antibody

Product data:

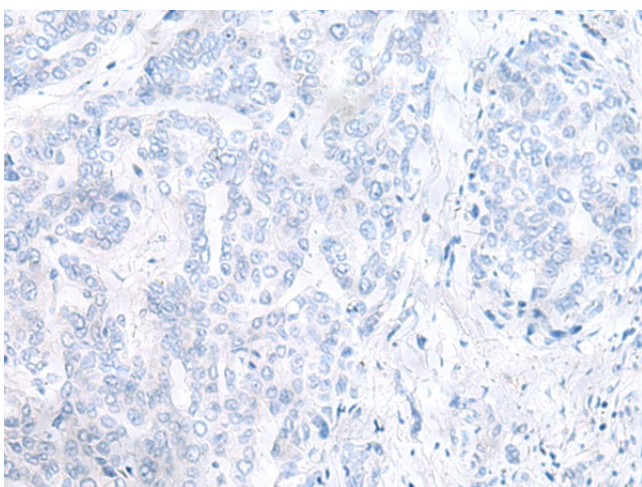
Product Type:	Primary Antibodies
Applications:	IHC
Recommended Dilution:	IHC: 30-150 Positive control: Human liver cancer Predicted cell location: Cytoplasm or Nucleus
Reactivity:	Human, Mouse
Host:	Rabbit
Isotype:	IgG
Clonality:	Polyclonal
Immunogen:	Synthetic peptide of human FAAP24
Formulation:	pH7.4 PBS, 0.05% NaN ₃ , 40% Glycerol
Concentration:	lot specific
Purification:	Antigen affinity purification
Conjugation:	Unconjugated
Storage:	Store at -20°C.
Stability:	1 year
Gene Name:	Fanconi anemia core complex associated protein 24
Database Link:	Entrez Gene 91442 Human Q9BTP7
Background:	Plays a role in DNA repair through recruitment of the FA core complex to damaged DNA. Regulates FANCD2 monoubiquitination upon DNA damage. Induces chromosomal instability as well as hypersensitivity to DNA cross-linking agents, when repressed. Targets FANCM/FAAP24 complex to the DNA, preferentially to single strand DNA.



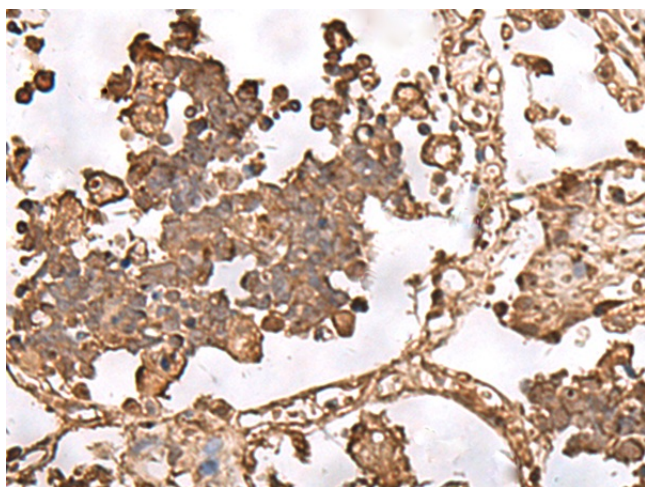
[View online »](#)

Product images:

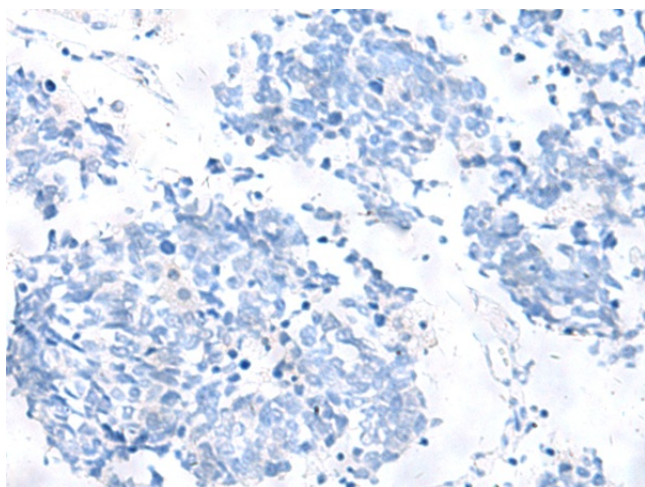
Immunohistochemistry of paraffin-embedded Human liver cancer tissue using TA368282 (FAAP24 Antibody) at dilution 1/30 (Original magnification: $\times 200$)



Immunohistochemistry of paraffin-embedded Human liver cancer tissue using TA368282 (FAAP24 Antibody) at dilution 1/30, treated with synthetic peptide. (Original magnification: $\times 200$)



Immunohistochemistry of paraffin-embedded Human lung cancer tissue using TA368282 (FAAP24 Antibody) at dilution 1/30 (Original magnification: $\times 200$)



Immunohistochemistry of paraffin-embedded Human lung cancer tissue using TA368282 (FAAP24 Antibody) at dilution 1/30, treated with synthetic peptide. (Original magnification: $\times 200$)