

Product datasheet for **TA368275S**

EVI1 (MECOM) Rabbit Polyclonal Antibody

Product data:

Product Type:	Primary Antibodies
Applications:	IHC, WB
Recommended Dilution:	WB: 200-1000 WB positive control: NIH/3T3 cell lysate IHC: 30-150 Positive control: Human ovarian cancer Predicted cell location: Nucleus
Reactivity:	Human, Mouse
Host:	Rabbit
Isotype:	IgG
Clonality:	Polyclonal
Immunogen:	Synthetic peptide of human MECOM
Formulation:	pH7.4 PBS, 0.05% NaN ₃ , 40% Glycerol
Purification:	Antigen affinity purification
Conjugation:	Unconjugated
Storage:	Store at -20°C.
Stability:	1 year
Predicted Protein Size:	118 kDa
Gene Name:	MDS1 and EVI1 complex locus
Database Link:	Entrez Gene 2122 Human Q03112

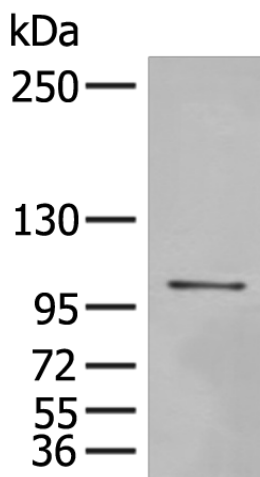
Background: The protein encoded by this gene is a transcriptional regulator and oncoprotein that may be involved in hematopoiesis, apoptosis, development, and cell differentiation and proliferation. The encoded protein can interact with CTBP1, SMAD3, CREBBP, KAT2B, MAPK8, and MAPK9. This gene can undergo translocation with the AML1 gene, resulting in overexpression of this gene and the onset of leukemia. Several transcript variants encoding a few different isoforms have been found for this gene.

Synonyms: D630039M04Rik; Evi-1; Evi1; Jbo; Mds; Mds1; Mds1-Evi1; Prdm3; Znfpr1b1

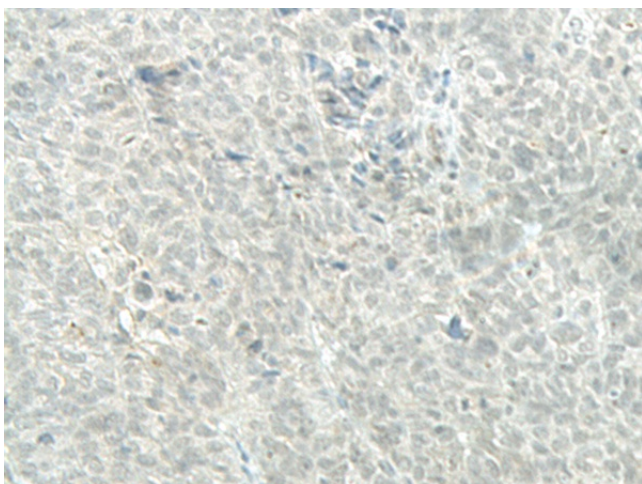


[View online »](#)

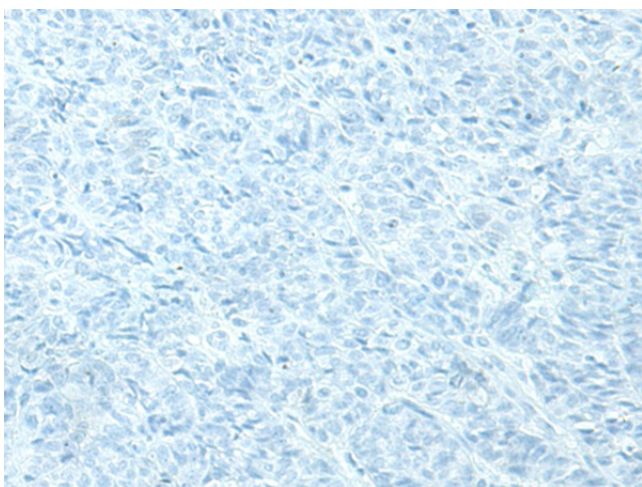
Product images:



Gel: 6%SDS-PAGE
Lysate: 40 μ g
Lane: NIH/3T3 cell lysate
Primary antibody: [TA368275] (MECOM Antibody) at dilution 1/400
Secondary antibody: Goat anti rabbit IgG at 1/8000 dilution
Exposure time: 4 minutes



Immunohistochemistry of paraffin-embedded Human ovarian cancer tissue using [TA368275] (MECOM Antibody) at dilution 1/40 (Original magnification: \times 200)



Immunohistochemistry of paraffin-embedded Human ovarian cancer tissue using [TA368275] (MECOM Antibody) at dilution 1/40, treated with synthetic peptide. (Original magnification: ×200)