

## Product datasheet for **TA368253**

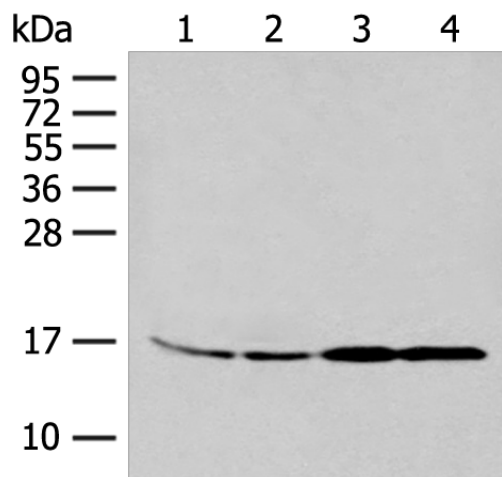
### SF20 (MYDGF) Rabbit Polyclonal Antibody

#### Product data:

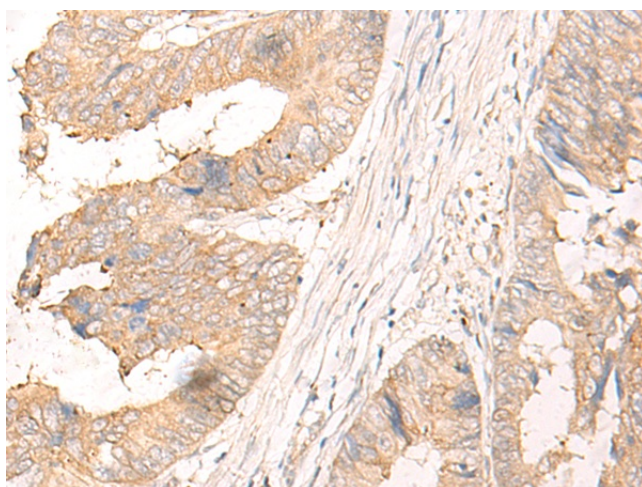
Product Type:	Primary Antibodies
Applications:	IHC, WB
Recommended Dilution:	WB: 500-2000 WB positive control: 293T and K562 cell, Human between peritoneal stromal sarcoma tissue, HEPG2 cell lysates IHC: 30-150 Positive control: Human colorectal cancer Predicted cell location: Cytoplasm
Reactivity:	Human, Mouse
Host:	Rabbit
Isotype:	IgG
Clonality:	Polyclonal
Immunogen:	Synthetic peptide of human MYDGF
Formulation:	pH7.4 PBS, 0.05% NaN <sub>3</sub> , 40% Glycerol
Concentration:	lot specific
Purification:	Antigen affinity purification
Conjugation:	Unconjugated
Storage:	Store at -20°C.
Stability:	1 year
Predicted Protein Size:	19 kDa
Gene Name:	myeloid-derived growth factor
Database Link:	<a href="#">Entrez Gene 56005 Human Q969H8</a>
Background:	The protein encoded by this gene was previously thought to support proliferation of lymphoid cells and was considered an interleukin. However, this activity has not been reproducible and the function of this protein is currently unknown.



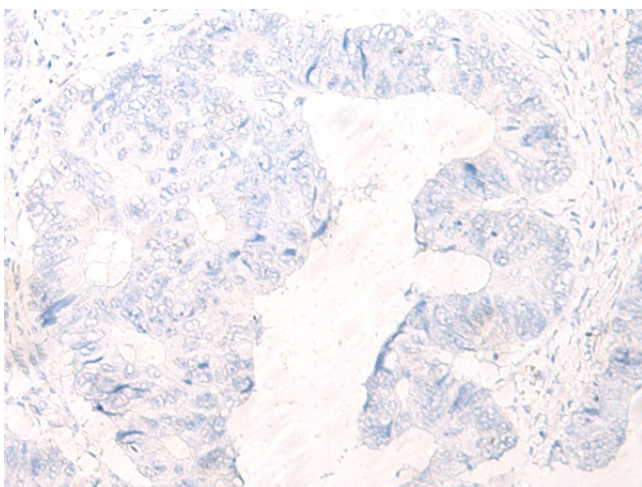
[View online »](#)

**Product images:**


Gel: 12%SDS-PAGE  
 Lysate: 40 µg  
 Lane 1-4: 293T and K562 cell  
 Human between peritoneal stromal sarcoma  
 tissue  
 HEPG2 cell lysates  
 Primary antibody: TA368253 (MYDGF Antibody) at  
 dilution 1/250  
 Secondary antibody: Goat anti rabbit IgG at  
 1/8000 dilution  
 Exposure time: 6 minutes



Immunohistochemistry of paraffin-embedded  
 Human colorectal cancer tissue using TA368253  
 (MYDGF Antibody) at dilution 1/25 (Original  
 magnification: ×200)



Immunohistochemistry of paraffin-embedded Human colorectal cancer tissue using TA368253 (MYDGF Antibody) at dilution 1/25, treated with synthetic peptide. (Original magnification: ×200)