

## Product datasheet for **TA368247S**

### Interleukin 34 (IL34) Rabbit Polyclonal Antibody

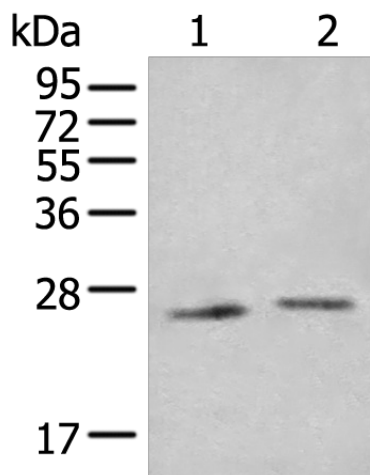
#### Product data:

Product Type:	Primary Antibodies
Applications:	IHC, WB
Recommended Dilution:	WB: 200-1000 WB positive control: Human fetal brain tissue and Human cerebella tissue lysates IHC: 30-150 Positive control: Human cervical cancer Predicted cell location: Secreted
Reactivity:	Human
Host:	Rabbit
Isotype:	IgG
Clonality:	Polyclonal
Immunogen:	Synthetic peptide of human IL34
Formulation:	pH7.4 PBS, 0.05% NaN <sub>3</sub> , 40% Glycerol
Purification:	Antigen affinity purification
Conjugation:	Unconjugated
Storage:	Store at -20°C.
Stability:	1 year
Predicted Protein Size:	27 kDa
Gene Name:	interleukin 34
Database Link:	<a href="#">Entrez Gene 146433 Human Q6ZMJ4</a>
Background:	Cytokine that promotes the proliferation, survival and differentiation of monocytes and macrophages. Promotes the release of proinflammatory chemokines, and thereby plays an important role in innate immunity and in inflammatory processes. Plays an important role in the regulation of osteoclast proliferation and differentiation, and in the regulation of bone resorption. Signaling via CSF1R and its downstream effectors stimulates phosphorylation of MAPK1/ERK2 AND MAPK3/ERK1.
Synonyms:	C16orf77; IL-34; MGC34647

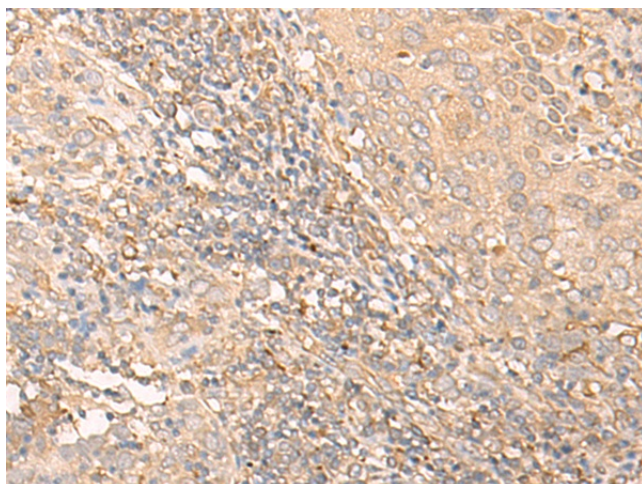


[View online »](#)

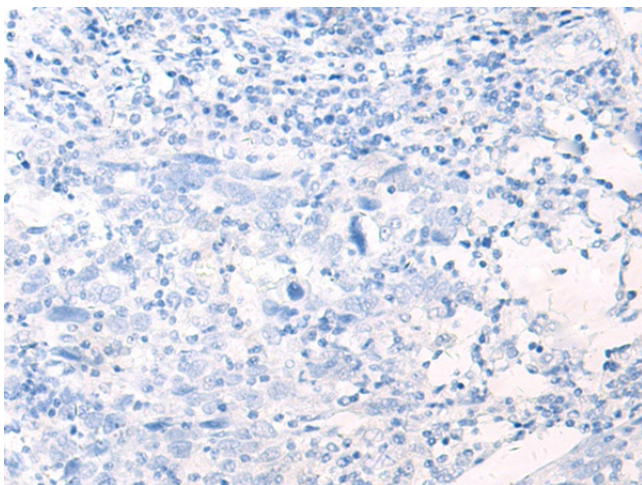
Product images:



Gel: 12%SDS-PAGE  
 Lysate: 40 µg  
 Lane 1-2: Human fetal brain tissue and Human cerebella tissue lysates  
 Primary antibody: [TA368247] (IL34 Antibody) at dilution 1/400  
 Secondary antibody: Goat anti rabbit IgG at 1/8000 dilution  
 Exposure time: 10 minutes



Immunohistochemistry of paraffin-embedded Human cervical cancer tissue using [TA368247] (IL34 Antibody) at dilution 1/30 (Original magnification: ×200)



Immunohistochemistry of paraffin-embedded Human cervical cancer tissue using [TA368247] (IL34 Antibody) at dilution 1/30, treated with synthetic peptide. (Original magnification: ×200)