

Product datasheet for **TA368247**

Interleukin 34 (IL34) Rabbit Polyclonal Antibody

Product data:

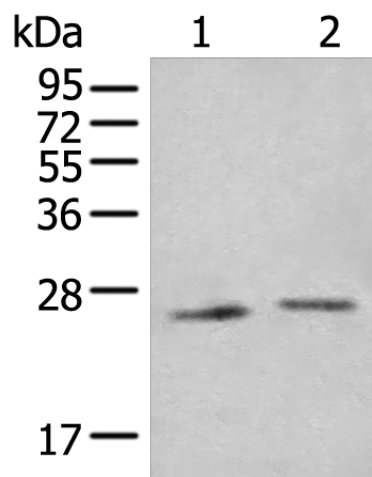
Product Type:	Primary Antibodies
Applications:	IHC, WB
Recommended Dilution:	WB: 200-1000 WB positive control: Human fetal brain tissue and Human cerebella tissue lysates IHC: 30-150 Positive control: Human cervical cancer Predicted cell location: Secreted
Reactivity:	Human
Host:	Rabbit
Isotype:	IgG
Clonality:	Polyclonal
Immunogen:	Synthetic peptide of human IL34
Formulation:	pH7.4 PBS, 0.05% NaN ₃ , 40% Glycerol
Concentration:	lot specific
Purification:	Antigen affinity purification
Conjugation:	Unconjugated
Storage:	Store at -20°C.
Stability:	1 year
Predicted Protein Size:	27 kDa
Gene Name:	interleukin 34
Database Link:	Entrez Gene 146433 Human Q6ZMJ4
Background:	Cytokine that promotes the proliferation, survival and differentiation of monocytes and macrophages. Promotes the release of proinflammatory chemokines, and thereby plays an important role in innate immunity and in inflammatory processes. Plays an important role in the regulation of osteoclast proliferation and differentiation, and in the regulation of bone resorption. Signaling via CSF1R and its downstream effectors stimulates phosphorylation of MAPK1/ERK2 AND MAPK3/ERK1.



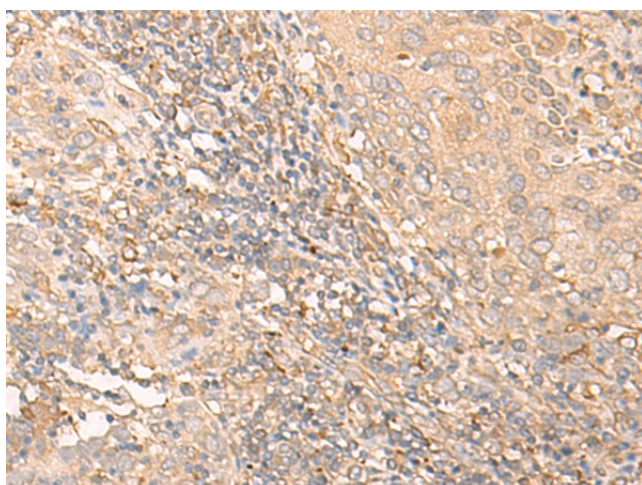
[View online »](#)

Synonyms: C16orf77; IL-34; MGC34647

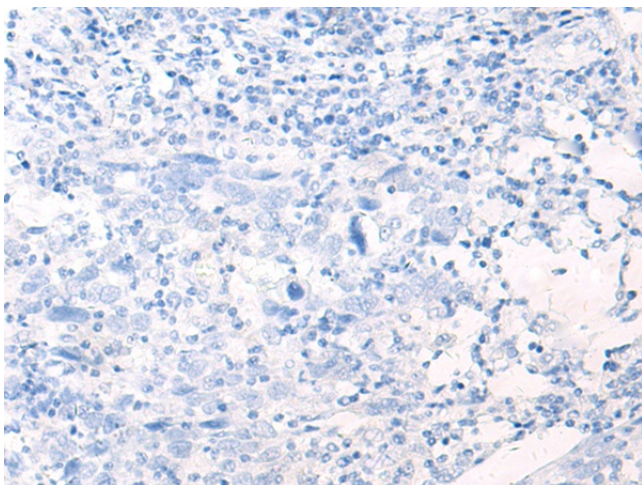
Product images:



Gel: 12%SDS-PAGE
Lysate: 40 μ g
Lane 1-2: Human fetal brain tissue and Human cerebella tissue lysates
Primary antibody: TA368247 (IL34 Antibody) at dilution 1/400
Secondary antibody: Goat anti rabbit IgG at 1/8000 dilution
Exposure time: 10 minutes



Immunohistochemistry of paraffin-embedded Human cervical cancer tissue using TA368247 (IL34 Antibody) at dilution 1/30 (Original magnification: \times 200)



Immunohistochemistry of paraffin-embedded Human cervical cancer tissue using TA368247 (IL34 Antibody) at dilution 1/30, treated with synthetic peptide. (Original magnification: ×200)