

## Product datasheet for **TA368241**

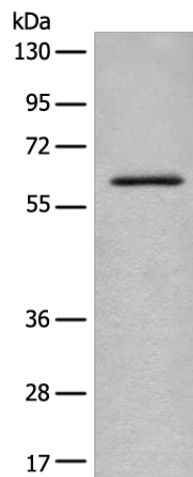
### ENO4 Rabbit Polyclonal Antibody

#### Product data:

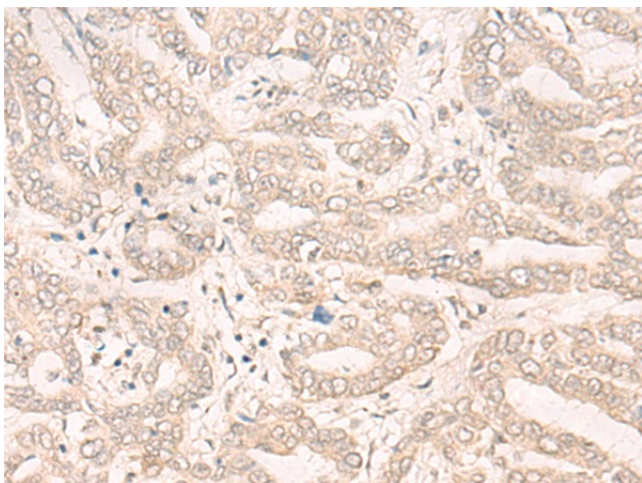
|                         |                                                                                                                                                          |
|-------------------------|----------------------------------------------------------------------------------------------------------------------------------------------------------|
| Product Type:           | Primary Antibodies                                                                                                                                       |
| Applications:           | IHC, WB                                                                                                                                                  |
| Recommended Dilution:   | WB: 500-2000<br>WB positive control: Mouse lung tissue lysate<br>IHC: 30-150<br>Positive control: Human liver cancer<br>Predicted cell location: Nucleus |
| Reactivity:             | Human, Mouse                                                                                                                                             |
| Host:                   | Rabbit                                                                                                                                                   |
| Isotype:                | IgG                                                                                                                                                      |
| Clonality:              | Polyclonal                                                                                                                                               |
| Immunogen:              | Synthetic peptide of human ENO4                                                                                                                          |
| Formulation:            | pH7.4 PBS, 0.05% NaN <sub>3</sub> , 40% Glycerol                                                                                                         |
| Concentration:          | lot specific                                                                                                                                             |
| Purification:           | Antigen affinity purification                                                                                                                            |
| Conjugation:            | Unconjugated                                                                                                                                             |
| Storage:                | Store at -20°C.                                                                                                                                          |
| Stability:              | 1 year                                                                                                                                                   |
| Predicted Protein Size: | 69 kDa                                                                                                                                                   |
| Gene Name:              | enolase family member 4                                                                                                                                  |
| Database Link:          | <a href="#">Entrez Gene 387712 Human A6NNW6</a>                                                                                                          |
| Background:             | May be required for sperm motility and function.                                                                                                         |
| Synonyms:               | AC023283.3; C10orf134                                                                                                                                    |



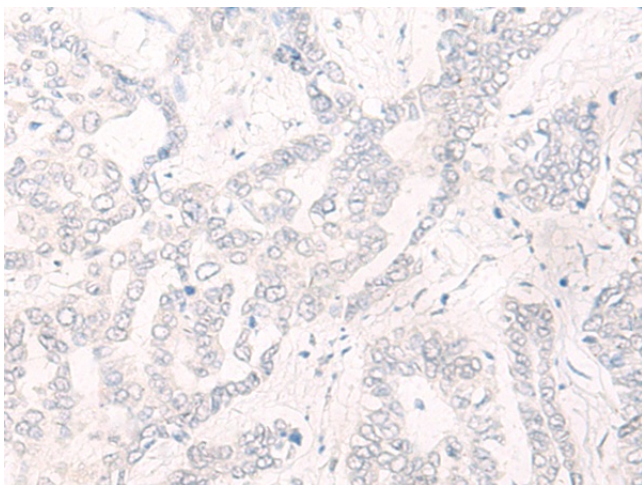
[View online »](#)

**Product images:**

Gel: 8%SDS-PAGE  
Lysate: 40  $\mu$ g  
Lane: Mouse lung tissue lysate  
Primary antibody: TA368241 (ENO4 Antibody) at dilution 1/450  
Secondary antibody: Goat anti rabbit IgG at 1/8000 dilution  
Exposure time: 10 seconds



Immunohistochemistry of paraffin-embedded Human liver cancer tissue using TA368241 (ENO4 Antibody) at dilution 1/30 (Original magnification:  $\times$ 200)



Immunohistochemistry of paraffin-embedded Human liver cancer tissue using TA368241 (ENO4 Antibody) at dilution 1/30, treated with synthetic peptide. (Original magnification:  $\times 200$ )