

## Product datasheet for **TA368240S**

### EN2 Rabbit Polyclonal Antibody

#### Product data:

Product Type:	Primary Antibodies
Applications:	IHC, WB
Recommended Dilution:	WB: 500-2000 WB positive control: Jurkat cell lysate IHC: 30-150 Positive control: Human ovarian cancer Predicted cell location: Nucleus
Reactivity:	Human, Mouse
Host:	Rabbit
Isotype:	IgG
Clonality:	Polyclonal
Immunogen:	Synthetic peptide of human EN2
Formulation:	pH7.4 PBS, 0.05% NaN <sub>3</sub> , 40% Glycerol
Purification:	Antigen affinity purification
Conjugation:	Unconjugated
Storage:	Store at -20°C.
Stability:	1 year
Predicted Protein Size:	34 kDa
Gene Name:	engrailed homeobox 2
Database Link:	<a href="#">Entrez Gene 2020 Human P19622</a>

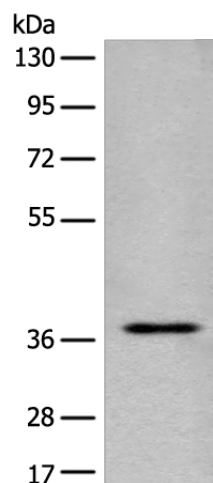
**Background:** Homeobox-containing genes are thought to have a role in controlling development. In *Drosophila*, the 'engrailed' (en) gene plays an important role during development in segmentation, where it is required for the formation of posterior compartments. Different mutations in the mouse homologs, En1 and En2, produced different developmental defects that frequently are lethal. The human engrailed homologs 1 and 2 encode homeodomain-containing proteins and have been implicated in the control of pattern formation during development of the central nervous system.



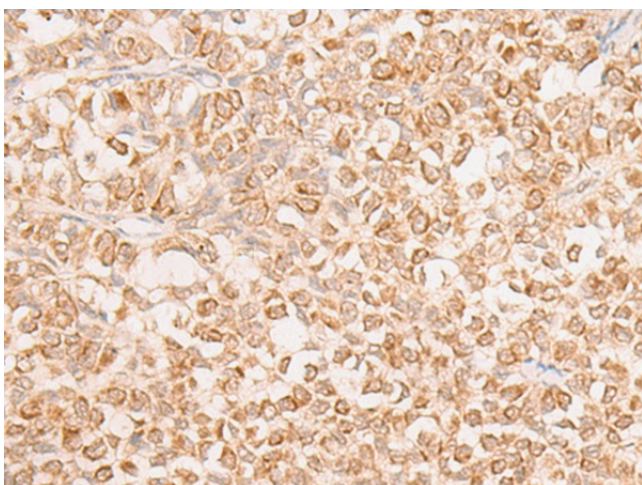
[View online »](#)

Synonyms: AUTS10; engrailed-2; Hu-En-2

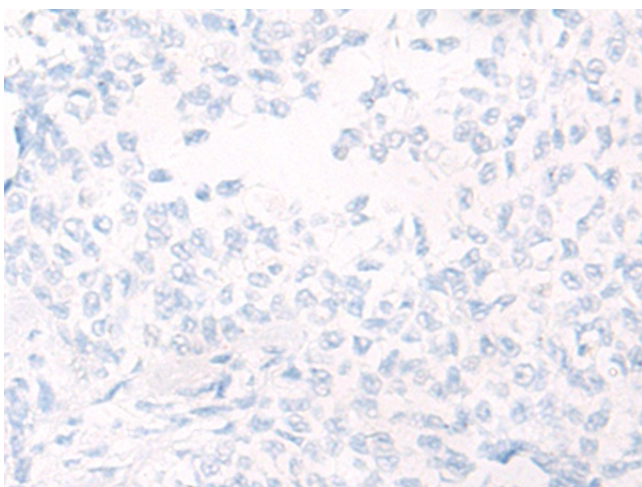
### Product images:



Gel: 8%SDS-PAGE  
Lysate: 40  $\mu$ g  
Lane: Jurkat cell lysate  
Primary antibody: [TA368240] (EN2 Antibody) at dilution 1/400  
Secondary antibody: Goat anti rabbit IgG at 1/8000 dilution  
Exposure time: 5 minutes



Immunohistochemistry of paraffin-embedded Human ovarian cancer tissue using [TA368240] (EN2 Antibody) at dilution 1/20 (Original magnification:  $\times$ 200)



Immunohistochemistry of paraffin-embedded Human ovarian cancer tissue using [TA368240] (EN2 Antibody) at dilution 1/20, treated with synthetic peptide. (Original magnification: ×200)