

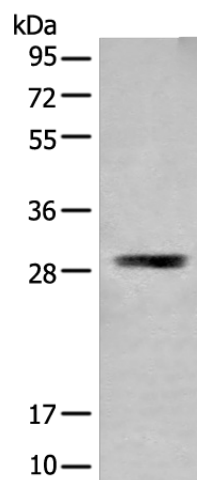
Product datasheet for **TA368236S**

TMEM192 Rabbit Polyclonal Antibody

Product data:

Product Type:	Primary Antibodies
Applications:	WB
Recommended Dilution:	WB: 200-1000 WB positive control: Human kidney tissue lysate
Reactivity:	Human
Host:	Rabbit
Isotype:	IgG
Clonality:	Polyclonal
Immunogen:	Synthetic peptide of human TMEM192
Formulation:	pH7.4 PBS, 0.05% NaN ₃ , 40% Glycerol
Purification:	Antigen affinity purification
Conjugation:	Unconjugated
Storage:	Store at -20°C.
Stability:	1 year
Predicted Protein Size:	31 kDa
Gene Name:	transmembrane protein 192
Database Link:	Entrez Gene 201931 Human Q8IY95
Background:	TMEM192 is a widely expressed, four transmembrane protein that localizes to late endosomal/lysosomal membranes. This localization is mediated by two dileucine motifs present at the amino-terminus of TMEM192. A cysteine residue near the carboxy residue is responsible for disulfide bond formation in TMEM192 homodimers. Little is known about the function of this protein.
Synonyms:	FLJ38482


[View online »](#)

Product images:


Gel: 12%SDS-PAGE
 Lysate: 40 µg
 Lane: Human kidney tissue lysate
 Primary antibody: [TA368236] (TMEM192 Antibody) at dilution 1/300
 Secondary antibody: Goat anti rabbit IgG at 1/8000 dilution
 Exposure time: 30 seconds