

## Product datasheet for **TA368233S**

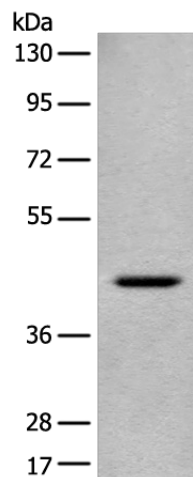
### EME2 Rabbit Polyclonal Antibody

#### Product data:

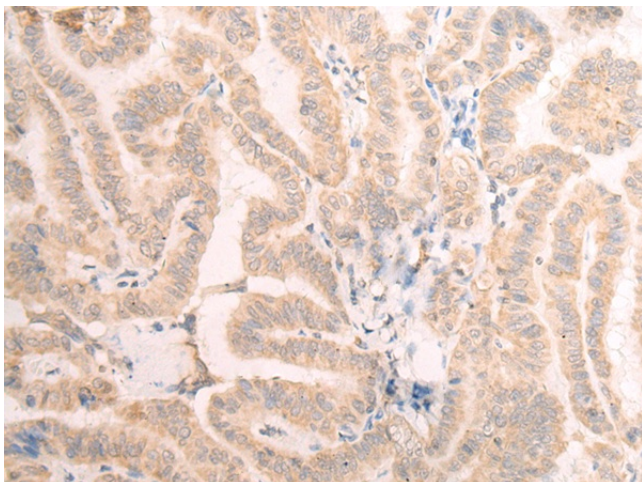
Product Type:	Primary Antibodies
Applications:	IHC, WB
Recommended Dilution:	WB: 200-1000 WB positive control: 231 cell lysate IHC: 30-150 Positive control: Human thyroid cancer Predicted cell location: Cytoplasm or Nucleus
Reactivity:	Human
Host:	Rabbit
Isotype:	IgG
Clonality:	Polyclonal
Immunogen:	Synthetic peptide of human EME2
Formulation:	pH7.4 PBS, 0.05% NaN <sub>3</sub> , 40% Glycerol
Purification:	Antigen affinity purification
Conjugation:	Unconjugated
Storage:	Store at -20°C.
Stability:	1 year
Predicted Protein Size:	41 kDa
Gene Name:	essential meiotic structure-specific endonuclease subunit 2
Database Link:	<a href="#">Entrez Gene 197342 Human</a> <a href="#">A4GXA9</a>
Background:	Interacts with MUS81 to form a DNA structure-specific endonuclease which cleaves substrates such as 3'-flap structures.
Synonyms:	FLJ00151; gs125



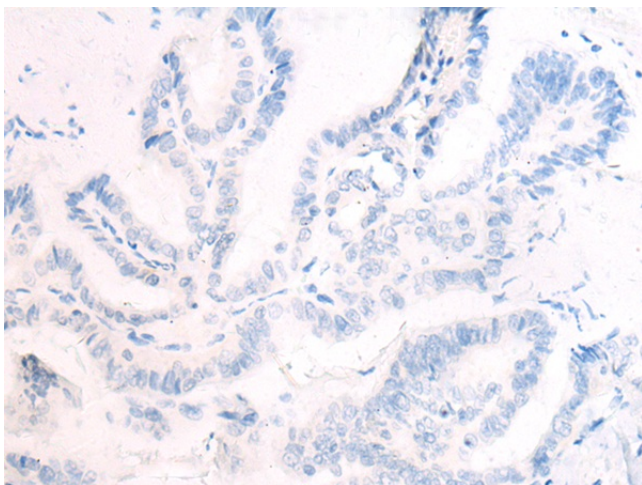
[View online »](#)

**Product images:**

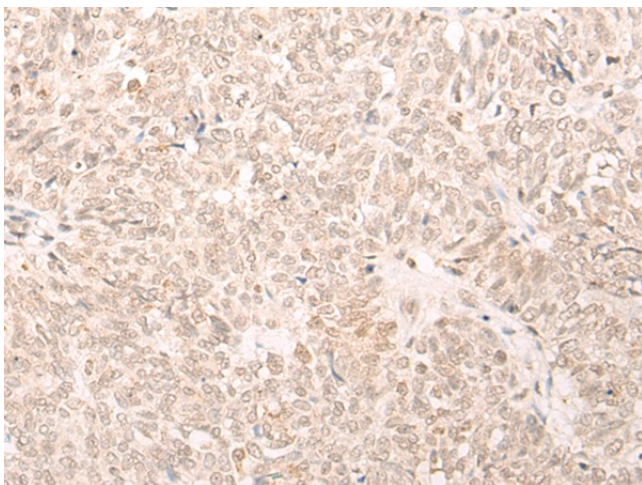
Gel: 8%SDS-PAGE  
Lysate: 40  $\mu$ g  
Lane: 231 cell lysate  
Primary antibody: [TA368233] (EME2 Antibody) at dilution 1/200  
Secondary antibody: Goat anti rabbit IgG at 1/8000 dilution  
Exposure time: 2 minutes



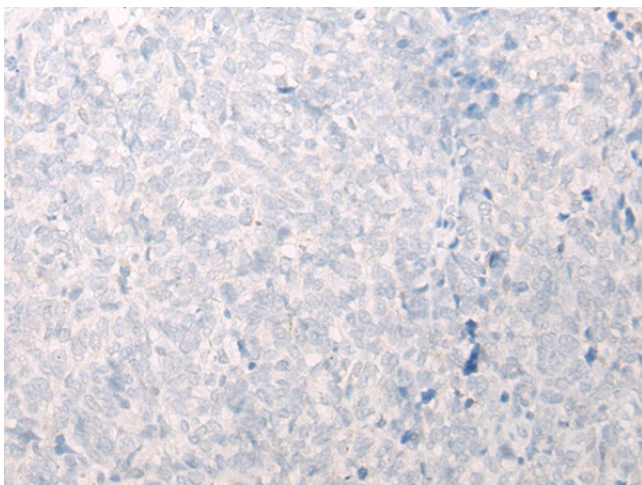
Immunohistochemistry of paraffin-embedded Human thyroid cancer tissue using [TA368233] (EME2 Antibody) at dilution 1/25 (Original magnification:  $\times$ 200)



Immunohistochemistry of paraffin-embedded Human thyroid cancer tissue using [TA368233] (EME2 Antibody) at dilution 1/25, treated with synthetic peptide. (Original magnification: ×200)



Immunohistochemistry of paraffin-embedded Human ovarian cancer tissue using [TA368233] (EME2 Antibody) at dilution 1/25 (Original magnification: ×200)



Immunohistochemistry of paraffin-embedded Human ovarian cancer tissue using [TA368233] (EME2 Antibody) at dilution 1/25, treated with synthetic peptide. (Original magnification: ×200)