

## Product datasheet for **TA368227**

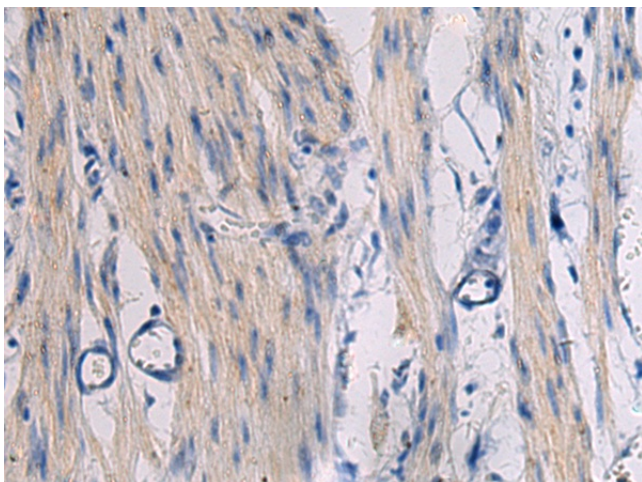
### **KLF1 Rabbit Polyclonal Antibody**

#### **Product data:**

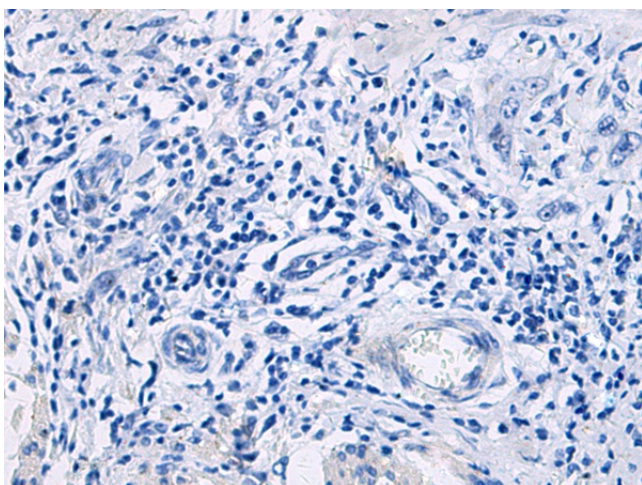
|                       |   |
|-----------------------|---|
| Product Type:         | Primary Antibodies  |
| Applications:         | IHC   |
| Recommended Dilution: | IHC: 25-50<br>Positive control: Human esophagus cancer<br>Predicted cell location: Cytoplasm  |
| Reactivity:           | Human   |
| Host:                 | Rabbit  |
| Isotype:              | IgG   |
| Clonality:            | Polyclonal  |
| Immunogen:            | Synthetic peptide of human KLF1   |
| Formulation:          | pH7.4 PBS, 0.05% NaN <sub>3</sub> , 40% Glycerol  |
| Concentration:        | lot specific  |
| Purification:         | Antigen affinity purification   |
| Conjugation:          | Unconjugated  |
| Storage:              | Store at -20°C.   |
| Stability:            | 1 year  |
| Gene Name:            | Kruppel-like factor 1 (erythroid)   |
| Database Link:        | <a href="#">Entrez Gene 10661 Human Q13351</a>  |
| Background:           | This gene encodes a hematopoietic-specific transcription factor that induces high-level expression of adult beta-globin and other erythroid genes. The zinc-finger protein binds to the DNA sequence CCACACCCT found in the beta hemoglobin promoter. Heterozygous loss-of-function mutations in this gene result in the dominant In(Lu) blood phenotype. |
| Synonyms:             | EKLF; INLU  |



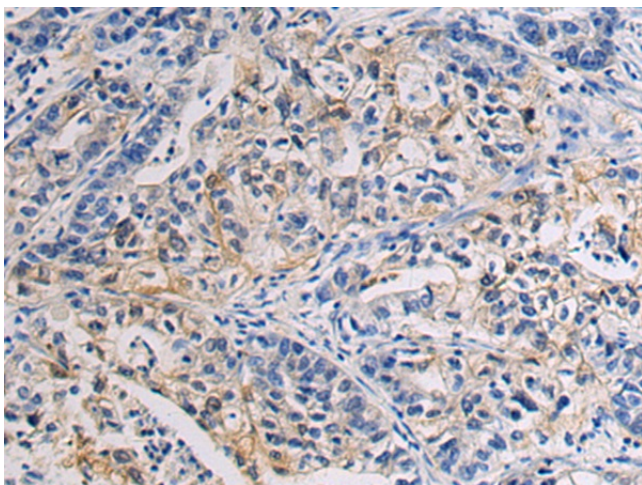
[View online »](#)

**Product images:**

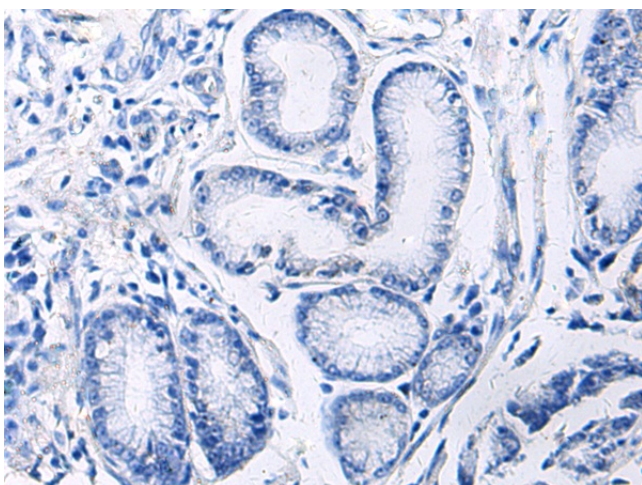
Immunohistochemistry of paraffin-embedded Human esophagus cancer tissue using TA368227 (KLF1 Antibody) at dilution 1/35 (Original magnification:  $\times 200$ )



Immunohistochemistry of paraffin-embedded Human esophagus cancer tissue using TA368227 (KLF1 Antibody) at dilution 1/35, treated with synthetic peptide. (Original magnification:  $\times 200$ )



Immunohistochemistry of paraffin-embedded Human gastric cancer tissue using TA368227 (KLF1 Antibody) at dilution 1/35 (Original magnification:  $\times 200$ )



Immunohistochemistry of paraffin-embedded Human gastric cancer tissue using TA368227 (KLF1 Antibody) at dilution 1/35, treated with synthetic peptide. (Original magnification:  $\times 200$ )