

## Product datasheet for **TA368223S**

### EHD3 Rabbit Polyclonal Antibody

#### Product data:

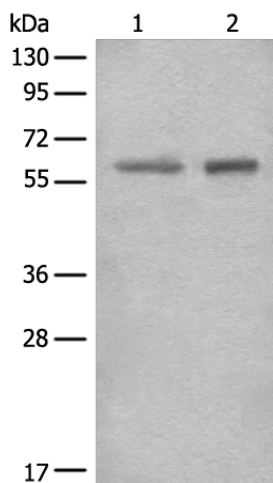
Product Type:	Primary Antibodies
Applications:	WB
Recommended Dilution:	WB: 200-1000 WB positive control: NIH/3T3 cell and Human heart tissue lysates
Reactivity:	Human, Mouse, Rat
Host:	Rabbit
Isotype:	IgG
Clonality:	Polyclonal
Immunogen:	Synthetic peptide of human EHD3
Formulation:	pH7.4 PBS, 0.05% NaN <sub>3</sub> , 40% Glycerol
Purification:	Antigen affinity purification
Conjugation:	Unconjugated
Storage:	Store at -20°C.
Stability:	1 year
Predicted Protein Size:	61 kDa
Gene Name:	EH domain containing 3
Database Link:	<a href="#">Entrez Gene 30845 Human Q9NZN3</a>
Background:	ATP- and membrane-binding protein that controls membrane reorganization/tubulation upon ATP hydrolysis . In vitro causes tubulation of endocytic membranes . Binding to phosphatidic acid induces its membrane tubulation activity. Plays a role in endocytic transport. Involved in early endosome to recycling endosome compartment (ERC), retrograde early endosome to Golgi, and endosome to plasma membrane (rapid recycling) protein transport. Involved in the regulation of Golgi maintenance and morphology. Involved in the recycling of internalized D1 dopamine receptor . Plays a role in cardiac protein trafficking probably implicating ANK2. Involved in the ventricular membrane targeting of SLC8A1 and CACNA1C and probably the atrial membrane localization of CACNA1GG and CACNA1H implicated in the regulation of atrial myocyte excitability and cardiac conduction .



[View online »](#)

Synonyms: EHD2; PAST3

### Product images:



Gel: 8%SDS-PAGE

Lysate: 40  $\mu$ g

Lane 1-2: NIH/3T3 cell and Human heart tissue lysates

Primary antibody: [TA368223] (EHD3 Antibody) at dilution 1/300

Secondary antibody: Goat anti rabbit IgG at 1/8000 dilution

Exposure time: 1 minute