

## Product datasheet for **TA368221S**

### EFHD2 Rabbit Polyclonal Antibody

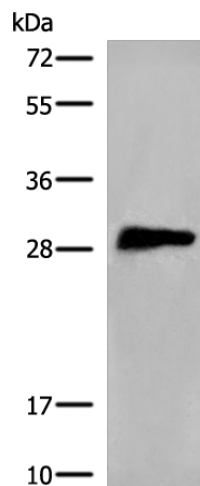
#### Product data:

Product Type:	Primary Antibodies
Applications:	WB
Recommended Dilution:	WB: 200-1000 WB positive control: A549 cell lysate
Reactivity:	Human, Mouse, Rat
Host:	Rabbit
Isotype:	IgG
Clonality:	Polyclonal
Immunogen:	Synthetic peptide of human EFHD2
Formulation:	pH7.4 PBS, 0.05% NaN <sub>3</sub> , 40% Glycerol
Purification:	Antigen affinity purification
Conjugation:	Unconjugated
Storage:	Store at -20°C.
Stability:	1 year
Predicted Protein Size:	27 kDa
Gene Name:	EF-hand domain family member D2
Database Link:	<a href="#">Entrez Gene 79180 Human Q96C19</a>
Background:	EFHD2 is a calcium-binding adaptor protein associated with pathologically aggregated tau in Alzheimer disease brain and in a mouse model of frontotemporal dementia. EFHD2 has cell type-specific functions, including modulation of intracellular calcium responses, actin dynamics, and microtubule transport. May regulate B-cell receptor (BCR)-induced immature and primary B-cell apoptosis. Plays a role as negative regulator of the canonical NF-kappa-B-activating branch. Controls spontaneous apoptosis through the regulation of BCL2L1 abundance.
Synonyms:	MGC4342; Swiprosin-1; SWS1



[View online »](#)

## Product images:



Gel: 12%SDS-PAGE  
Lysate: 40  $\mu$ g  
Lane: A549 cell lysate  
Primary antibody: [TA368221] (EFHD2 Antibody)  
at dilution 1/350  
Secondary antibody: Goat anti rabbit IgG at  
1/8000 dilution  
Exposure time: 10 seconds