

Product datasheet for **TA368221**

EFHD2 Rabbit Polyclonal Antibody

Product data:

Product Type:	Primary Antibodies
Applications:	WB
Recommended Dilution:	WB: 200-1000 WB positive control: A549 cell lysate
Reactivity:	Human, Mouse, Rat
Host:	Rabbit
Isotype:	IgG
Clonality:	Polyclonal
Immunogen:	Synthetic peptide of human EFHD2
Formulation:	pH7.4 PBS, 0.05% NaN ₃ , 40% Glycerol
Concentration:	lot specific
Purification:	Antigen affinity purification
Conjugation:	Unconjugated
Storage:	Store at -20°C.
Stability:	1 year
Predicted Protein Size:	27 kDa
Gene Name:	EF-hand domain family member D2
Database Link:	Entrez Gene 79180 Human Q96C19

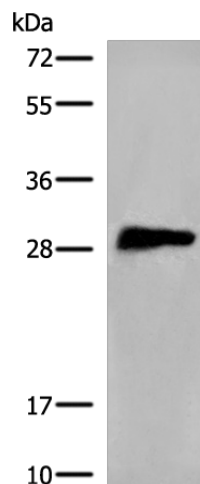
Background: EFHD2 is a calcium-binding adaptor protein associated with pathologically aggregated tau in Alzheimer disease brain and in a mouse model of frontotemporal dementia. EFHD2 has cell type-specific functions, including modulation of intracellular calcium responses, actin dynamics, and microtubule transport. May regulate B-cell receptor (BCR)-induced immature and primary B-cell apoptosis. Plays a role as negative regulator of the canonical NF-kappa-B-activating branch. Controls spontaneous apoptosis through the regulation of BCL2L1 abundance.

Synonyms: MGC4342; Swiprosin-1; SWS1



[View online »](#)

Product images:



Gel: 12%SDS-PAGE
Lysate: 40 μ g
Lane: A549 cell lysate
Primary antibody: TA368221 (EFHD2 Antibody) at dilution 1/350
Secondary antibody: Goat anti rabbit IgG at 1/8000 dilution
Exposure time: 10 seconds