

Product datasheet for **TA368214**

Eco1 (ESCO1) Rabbit Polyclonal Antibody

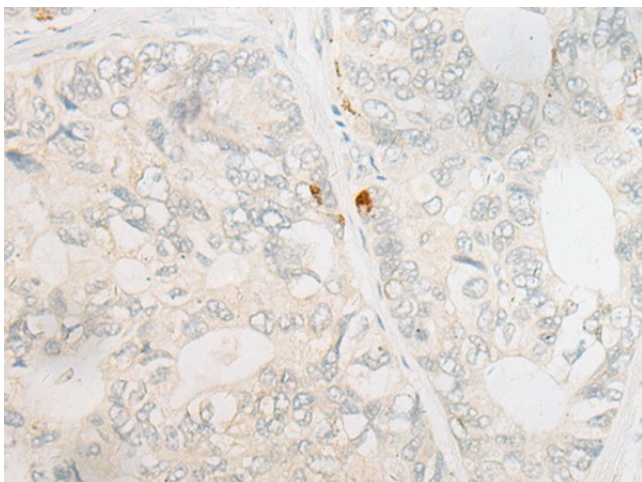
Product data:

Product Type:	Primary Antibodies
Applications:	IHC
Recommended Dilution:	IHC: 20-100 Positive control: Human gastric cancer Predicted cell location: Cytoplasm and Nucleus
Reactivity:	Human
Host:	Rabbit
Isotype:	IgG
Clonality:	Polyclonal
Immunogen:	Synthetic peptide of human ESCO1
Formulation:	pH7.4 PBS, 0.05% NaN ₃ , 40% Glycerol
Concentration:	lot specific
Purification:	Antigen affinity purification
Conjugation:	Unconjugated
Storage:	Store at -20°C.
Stability:	1 year
Gene Name:	establishment of sister chromatid cohesion N-acetyltransferase 1
Database Link:	Entrez Gene 114799 Human Q5FWF5
Background:	ESCO1 belongs to a conserved family of acetyltransferases involved in sister chromatid cohesion (Hou and Zou, 2005 [PubMed 15958495]).
Synonyms:	A930014I12Rik; CTF; ECO1; EFO1; EFO1p; ESO1; hEFO1; KIAA1911; MGC105022

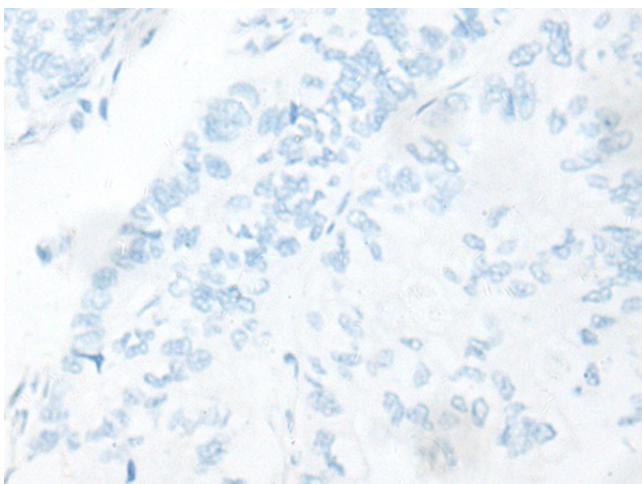


[View online »](#)

Product images:



Immunohistochemistry of paraffin-embedded Human gastric cancer tissue using TA368214 (ESCO1 Antibody) at dilution 1/20 (Original magnification: $\times 200$)



Immunohistochemistry of paraffin-embedded Human gastric cancer tissue using TA368214 (ESCO1 Antibody) at dilution 1/20, treated with synthetic peptide. (Original magnification: $\times 200$)