

## Product datasheet for **TA368213S**

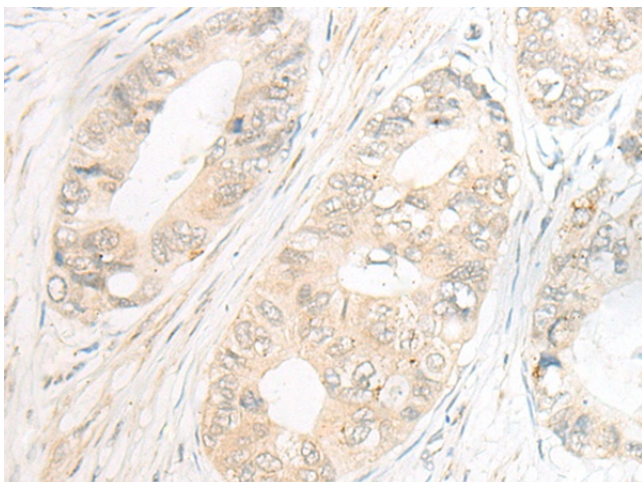
### EBF2 Rabbit Polyclonal Antibody

#### Product data:

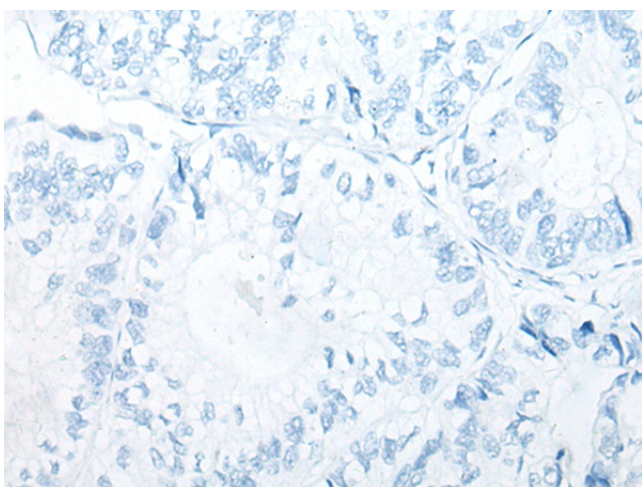
Product Type:	Primary Antibodies
Applications:	IHC
Recommended Dilution:	IHC: 20-100 Positive control: Human gastric cancer Predicted cell location: Nucleus
Reactivity:	Human, Mouse
Host:	Rabbit
Isotype:	IgG
Clonality:	Polyclonal
Immunogen:	Synthetic peptide of human EBF2
Formulation:	pH7.4 PBS, 0.05% NaN <sub>3</sub> , 40% Glycerol
Purification:	Antigen affinity purification
Conjugation:	Unconjugated
Storage:	Store at -20°C.
Stability:	1 year
Gene Name:	early B-cell factor 2
Database Link:	<a href="#">Entrez Gene 64641 Human Q9HAK2</a>
Background:	The protein encoded by this gene belongs to the COE (Collier/Olf/EBF) family of non-basic, helix-loop-helix transcription factors that have a well conserved DNA binding domain. The COE family proteins play an important role in variety of developmental processes. Studies in mouse suggest that this gene may be involved in the differentiation of osteoblasts.
Synonyms:	COE2; EBF-2; FLJ11500; O/E-3; OE-3



[View online »](#)

**Product images:**

Immunohistochemistry of paraffin-embedded Human gastric cancer tissue using [TA368213] (EBF2 Antibody) at dilution 1/30 (Original magnification:  $\times 200$ )



Immunohistochemistry of paraffin-embedded Human gastric cancer tissue using [TA368213] (EBF2 Antibody) at dilution 1/30, treated with synthetic peptide. (Original magnification:  $\times 200$ )