

## Product datasheet for **TA368212S**

### DZIP1 Rabbit Polyclonal Antibody

#### Product data:

Product Type:	Primary Antibodies
Applications:	IHC
Recommended Dilution:	IHC: 25-100 Positive control: Human liver cancer Predicted cell location: Cytoplasm
Reactivity:	Human
Host:	Rabbit
Isotype:	IgG
Clonality:	Polyclonal
Immunogen:	Synthetic peptide of human DZIP1
Formulation:	pH7.4 PBS, 0.05% NaN <sub>3</sub> , 40% Glycerol
Purification:	Antigen affinity purification
Conjugation:	Unconjugated
Storage:	Store at -20°C.
Stability:	1 year
Gene Name:	DAZ interacting zinc finger protein 1
Database Link:	<a href="#">Entrez Gene 22873 Human Q86YF9</a>

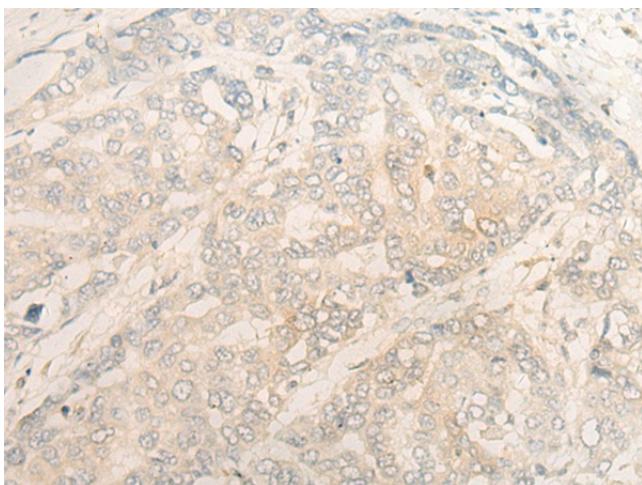
**Background:** DZIP1 (DAZ interacting protein 1) is also known as DZIP or DZIP2 and is a 867 amino acid protein which is expressed as 3 isoforms, designated DZIPb, DZIPt1 and DZIPt2. DZIP1 is localized to testis, oocytes, ovary and fetal brain, as well as in embryonic stem cells and germ cells. In testis, DZIP1 is localized to the nucleus and also shows some cytoplasmic distribution in spermatogonia. DZIP1 belongs to the C2H2-type zinc-finger protein family, and, characteristic of the C2H2-type zinc-finger protein family, DZIP1 contains one C2H2-type zinc-finger region through which it is thought to interact with DAZ, an interaction that promotes spermiogenesis. DZIP1 expression is not found in those afflicted with Sertoli cell-only syndrome (characterized by the absence of germ cells in the testis), suggesting that the lack of DZIP1 may be involved in the pathogenesis of Sertoli cell-only syndrome-induced male sterility.



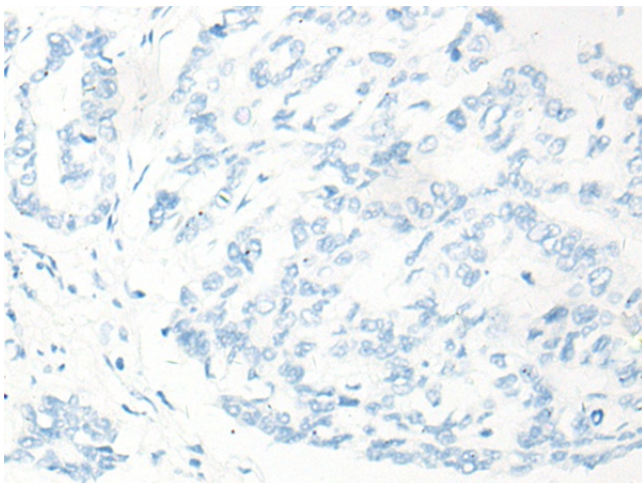
[View online »](#)

Synonyms: DZIP; DZIP2; DZIPt1; KIAA0996; OTTHUMP00000018564; OTTHUMP00000018565; RP11-23E3.3

### Product images:



Immunohistochemistry of paraffin-embedded Human liver cancer tissue using [TA368212] (DZIP1 Antibody) at dilution 1/35 (Original magnification:  $\times 200$ )



Immunohistochemistry of paraffin-embedded Human liver cancer tissue using [TA368212] (DZIP1 Antibody) at dilution 1/35, treated with synthetic peptide. (Original magnification:  $\times 200$ )