

Product datasheet for **TA368211**

DYNC1LI2 Rabbit Polyclonal Antibody

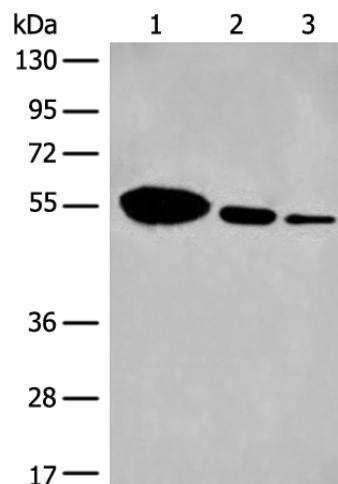
Product data:

Product Type:	Primary Antibodies
Applications:	IHC, WB
Recommended Dilution:	WB: 200-1000 WB positive control: Human fetal brain tissue and Mouse brain tissue, PC-3 cell lysates IHC: 25-100 Positive control: Human thyroid cancer Predicted cell location: Cytoplasm
Reactivity:	Human, Mouse, Rat
Host:	Rabbit
Isotype:	IgG
Clonality:	Polyclonal
Immunogen:	Synthetic peptide of human DYNC1LI2
Formulation:	pH7.4 PBS, 0.05% NaN ₃ , 40% Glycerol
Concentration:	lot specific
Purification:	Antigen affinity purification
Conjugation:	Unconjugated
Storage:	Store at -20°C.
Stability:	1 year
Predicted Protein Size:	54 kDa
Gene Name:	dynein cytoplasmic 1 light intermediate chain 2
Database Link:	Entrez Gene 1783 Human O43237
Background:	Acts as one of several non-catalytic accessory components of the cytoplasmic dynein 1 complex that are thought to be involved in linking dynein to cargos and to adapter proteins that regulate dynein function. Cytoplasmic dynein 1 acts as a motor for the intracellular retrograde motility of vesicles and organelles along microtubules. May play a role in binding dynein to membranous organelles or chromosomes.
Synonyms:	DNCL12; LIC-2; LIC2; LIC53/55

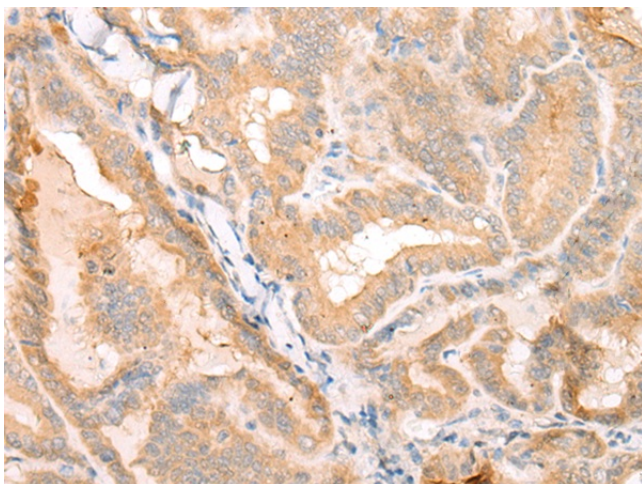


[View online »](#)

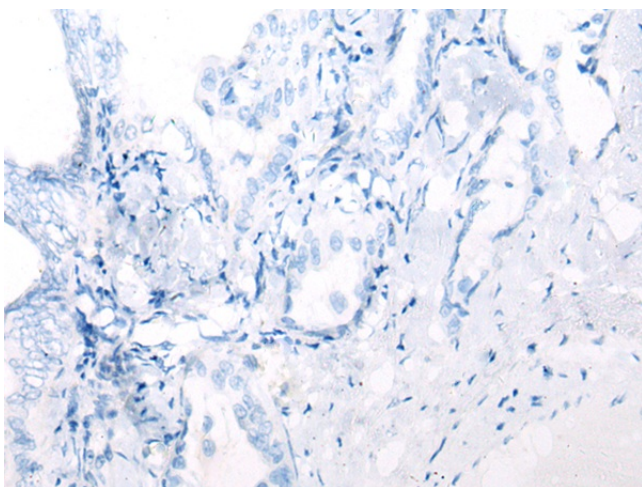
Product images:



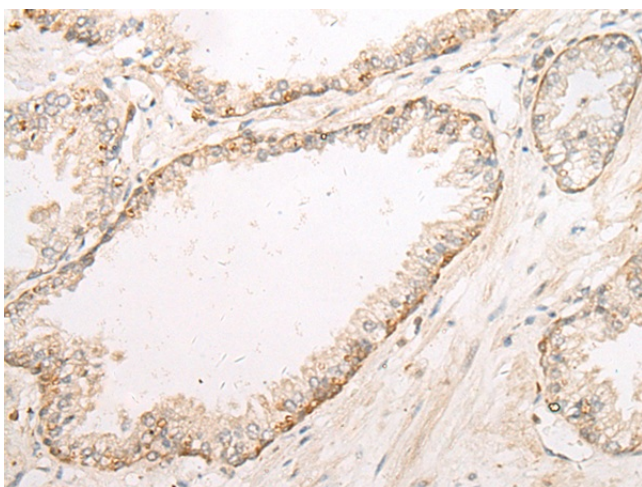
Gel: 8%SDS-PAGE
Lysate: 40 μ g
Lane 1-3: Human fetal brain tissue and Mouse brain tissue
PC-3 cell lysates
Primary antibody: TA368211 (DYNC1LI2 Antibody) at dilution 1/200
Secondary antibody: Goat anti rabbit IgG at 1/8000 dilution
Exposure time: 3 minutes



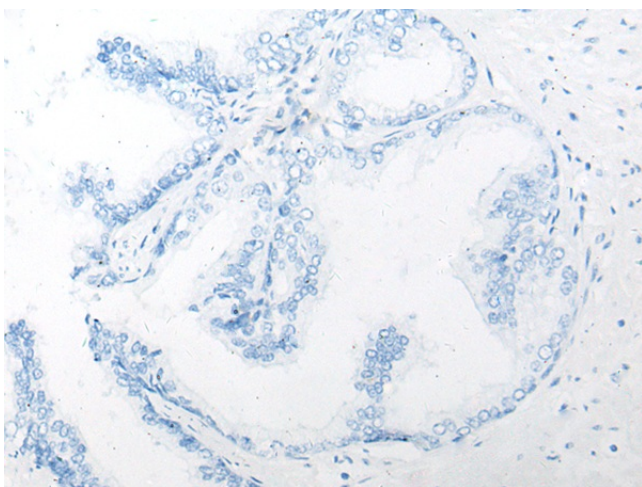
Immunohistochemistry of paraffin-embedded Human thyroid cancer tissue using TA368211 (DYNC1LI2 Antibody) at dilution 1/20 (Original magnification: $\times 200$)



Immunohistochemistry of paraffin-embedded Human thyroid cancer tissue using TA368211 (DYNC1LI2 Antibody) at dilution 1/20, treated with synthetic peptide. (Original magnification: x200)



Immunohistochemistry of paraffin-embedded Human prostate cancer tissue using TA368211 (DYNC1LI2 Antibody) at dilution 1/20 (Original magnification: x200)



Immunohistochemistry of paraffin-embedded Human prostate cancer tissue using TA368211 (DYNC1LI2 Antibody) at dilution 1/20, treated with synthetic peptide. (Original magnification: x200)