

## Product datasheet for **TA368208**

### STYXL2 Rabbit Polyclonal Antibody

#### Product data:

Product Type:	Primary Antibodies
Applications:	IHC
Recommended Dilution:	IHC: 50-300 Positive control: Human ovarian cancer Predicted cell location: Nucleus
Reactivity:	Human, Mouse
Host:	Rabbit
Isotype:	IgG
Clonality:	Polyclonal
Immunogen:	Synthetic peptide of human DUSP27
Formulation:	pH7.4 PBS, 0.05% NaN <sub>3</sub> , 40% Glycerol
Concentration:	lot specific
Purification:	Antigen affinity purification
Conjugation:	Unconjugated
Storage:	Store at -20°C.
Stability:	1 year
Gene Name:	dual specificity phosphatase 27 (putative)
Database Link:	<a href="#">Entrez Gene 92235 Human Q5VZP5</a>



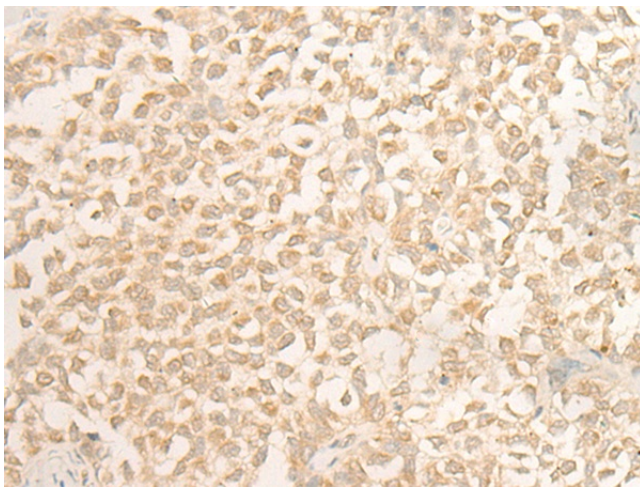
[View online »](#)

**Background:**

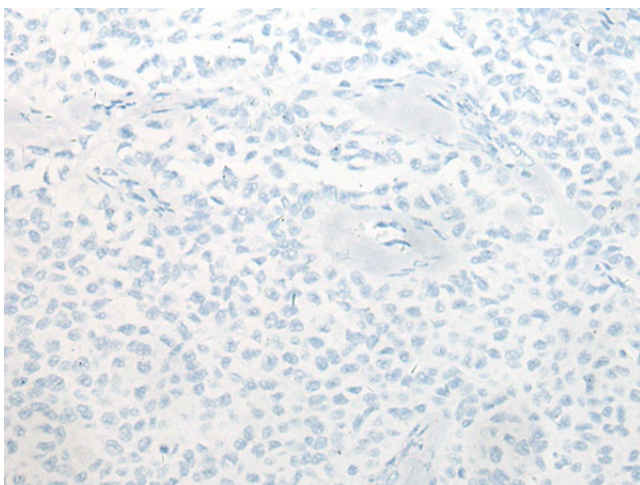
Dual specificity phosphatases (DSPs) are a subclass of the protein tyrosine phosphatase (PTP) gene superfamily, which are selective for dephosphorylating critical phosphothreonine and phosphotyrosine residues within MAP kinases. DSP gene expression is induced by a host of growth factors and/or cellular stresses, thereby negatively regulating MAP kinase superfamily members, including MAPK/ERK, SAPK/JNK and p38. DUSP27 (dual specificity phosphatase 27), also known as FMDSP or DUPD1 (dual specificity phosphatase and pro isomerase domain containing 1), is a 220 amino acid cytoplasmic protein that belongs to the protein-tyrosine phosphatase family. Expressed in skeletal muscle, liver and adipose tissue, DUSP27 may play a role in energy metabolism. The gene encoding DUSP27 is referred to as DUPD1 and maps to human chromosome 10, which houses over 1,200 genes and comprises nearly 4.5% of the human genome.

**Synonyms:**

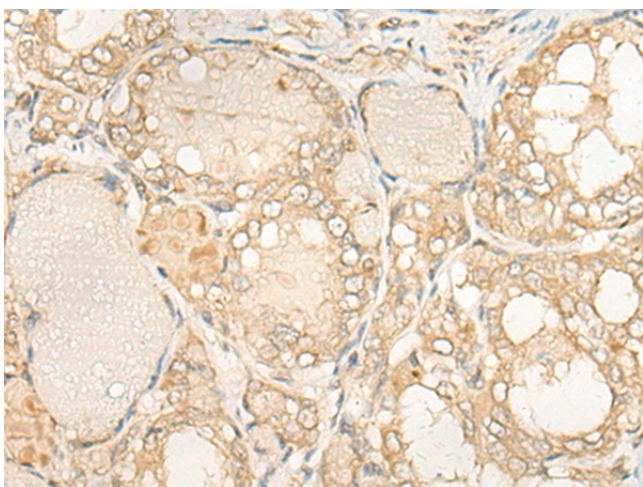
OTTHUMP00000032345

**Product images:**

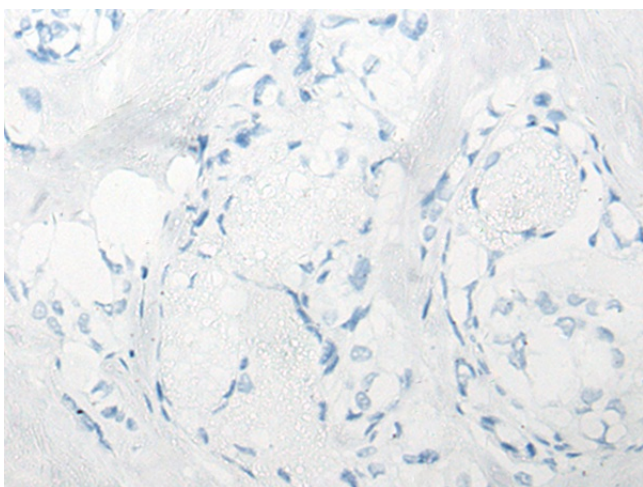
Immunohistochemistry of paraffin-embedded Human ovarian cancer tissue using TA368208 (DUSP27 Antibody) at dilution 1/50 (Original magnification:  $\times 200$ )



Immunohistochemistry of paraffin-embedded Human ovarian cancer tissue using TA368208 (DUSP27 Antibody) at dilution 1/50, treated with synthetic peptide. (Original magnification:  $\times 200$ )



Immunohistochemistry of paraffin-embedded Human thyroid cancer tissue using TA368208 (DUSP27 Antibody) at dilution 1/50 (Original magnification:  $\times 200$ )



Immunohistochemistry of paraffin-embedded Human thyroid cancer tissue using TA368208 (DUSP27 Antibody) at dilution 1/50, treated with synthetic peptide. (Original magnification:  $\times 200$ )