

## Product datasheet for **TA368207**

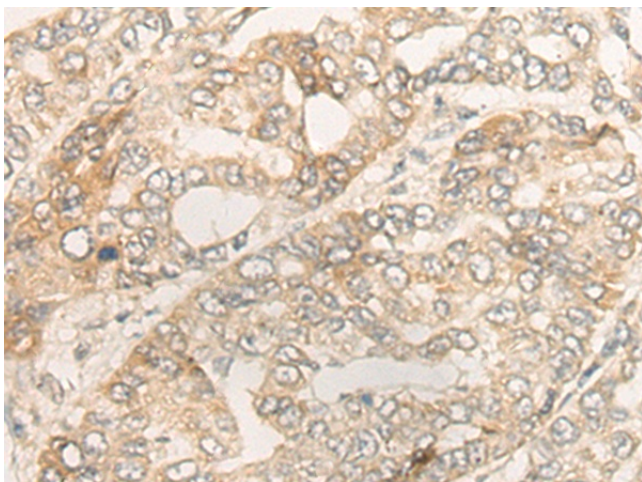
### DUOX2 Rabbit Polyclonal Antibody

#### Product data:

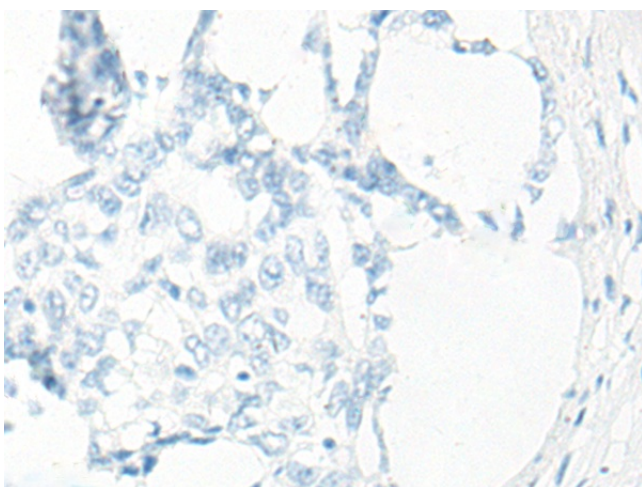
|                       |  |
|-----------------------|--|
| Product Type:         | Primary Antibodies   |
| Applications:         | IHC  |
| Recommended Dilution: | IHC: 30-150<br>Positive control: Human liver cancer<br>Predicted cell location: Cell membrane  |
| Reactivity:           | Human, Rat   |
| Host:                 | Rabbit   |
| Isotype:              | IgG  |
| Clonality:            | Polyclonal   |
| Immunogen:            | Synthetic peptide of human DUOX2   |
| Formulation:          | pH7.4 PBS, 0.05% NaN <sub>3</sub> , 40% Glycerol   |
| Concentration:        | lot specific   |
| Purification:         | Antigen affinity purification  |
| Conjugation:          | Unconjugated   |
| Storage:              | Store at -20°C.  |
| Stability:            | 1 year   |
| Gene Name:            | dual oxidase 2   |
| Database Link:        | <a href="#">Entrez Gene 50506 Human Q9NRD8</a>   |
| Background:           | The protein encoded by this gene is a glycoprotein and a member of the NADPH oxidase family. The synthesis of thyroid hormone is catalyzed by a protein complex located at the apical membrane of thyroid follicular cells. This complex contains an iodide transporter, thyroperoxidase, and a peroxide generating system that includes this encoded protein and DUOX1. This protein is known as dual oxidase because it has both a peroxidase homology domain and a gp91phox domain. |
| Synonyms:             | LNOX2; NOXF2; P138(TOX); P138-TOX; TDH6; THOX2   |



[View online »](#)

**Product images:**

Immunohistochemistry of paraffin-embedded Human liver cancer tissue using TA368207 (DUOX2 Antibody) at dilution 1/40 (Original magnification:  $\times 200$ )



Immunohistochemistry of paraffin-embedded Human liver cancer tissue using TA368207 (DUOX2 Antibody) at dilution 1/40, treated with synthetic peptide. (Original magnification:  $\times 200$ )