

## Product datasheet for **TA368204S**

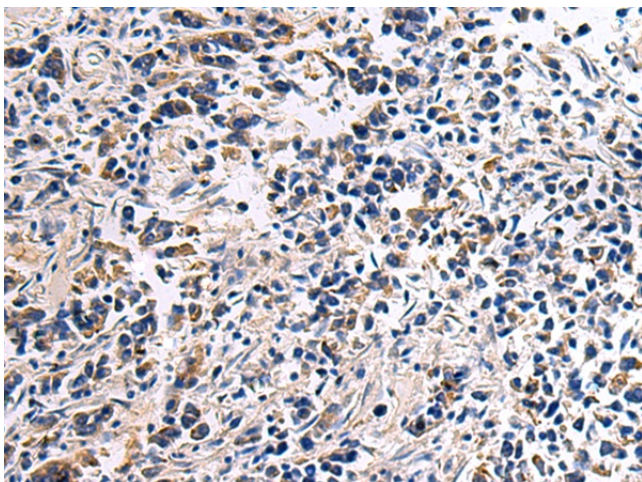
### DRGX Rabbit Polyclonal Antibody

#### Product data:

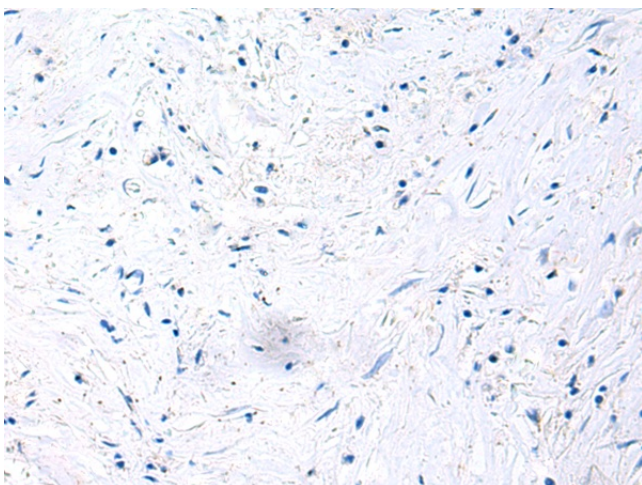
Product Type:	Primary Antibodies
Applications:	IHC
Recommended Dilution:	IHC: 50-200 Positive control: Human breast cancer Predicted cell location: Cytoplasm
Reactivity:	Human, Mouse, Rat
Host:	Rabbit
Isotype:	IgG
Clonality:	Polyclonal
Immunogen:	Synthetic peptide of human DRGX
Formulation:	pH7.4 PBS, 0.05% NaN <sub>3</sub> , 40% Glycerol
Purification:	Antigen affinity purification
Conjugation:	Unconjugated
Storage:	Store at -20°C.
Stability:	1 year
Gene Name:	dorsal root ganglia homeobox
Database Link:	<a href="#">Entrez Gene 644168 Human A6NNA5</a>
Background:	Transcription factor required for the formation of correct projections from nociceptive sensory neurons to the dorsal horn of the spinal cord and normal perception of pain.
Synonyms:	DRG11; PRRXL1



[View online »](#)

**Product images:**

Immunohistochemistry of paraffin-embedded Human breast cancer tissue using [TA368204] (DRGX Antibody) at dilution 1/45 (Original magnification: ×200)



Immunohistochemistry of paraffin-embedded Human breast cancer tissue using [TA368204] (DRGX Antibody) at dilution 1/45, treated with synthetic peptide. (Original magnification: ×200)