

## Product datasheet for **TA368199**

### DOCK11 Rabbit Polyclonal Antibody

#### Product data:

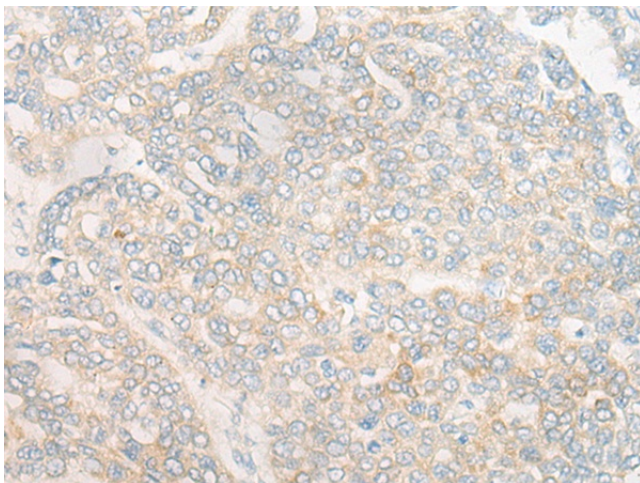
Product Type:	Primary Antibodies
Applications:	IHC
Recommended Dilution:	IHC: 20-100 Positive control: Human liver cancer Predicted cell location: Cytoplasm
Reactivity:	Human, Mouse
Host:	Rabbit
Isotype:	IgG
Clonality:	Polyclonal
Immunogen:	Synthetic peptide of human DOCK11
Formulation:	pH7.4 PBS, 0.05% NaN <sub>3</sub> , 40% Glycerol
Concentration:	lot specific
Purification:	Antigen affinity purification
Conjugation:	Unconjugated
Storage:	Store at -20°C.
Stability:	1 year
Gene Name:	dedicator of cytokinesis 11
Database Link:	<a href="#">Entrez Gene 139818 Human Q5JSL3</a>

**Background:** Small GTPases of the Rho family, Rho, Rac, and Cdc42, are critical regulators of the actin cytoskeleton and many other cellular processes. Rho GTPases are activated by Dbl-homology (DH)-domain-containing guanine nucleotide exchange factors (GEFs). DOCK 11 (dedicator of cytokinesis 11), also known as ACG or ZIZ2 (zizimin2), is a 2073 amino acid protein belonging to the DOCK family of cytokinesis-regulating proteins that is mainly expressed in peripheral blood leukocytes. DOCK 11 functions as a GEF that binds and activates Cdc42 by exchanging bound GDP for free GTP. Cdc42 mediates cell polarity, gene expression, cell cycle progression and cell-cell contacts. Similar to other DOCK family members, DOCK 11 contains a PH domain and two internal DOCK homology regions designated DHR1 and DHR2.

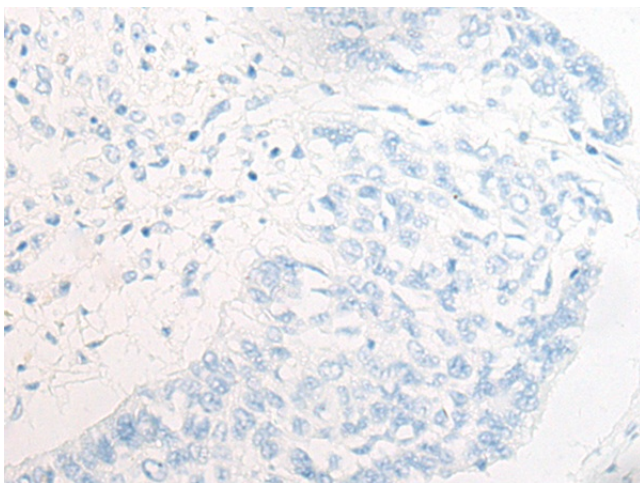

[View online »](#)

**Synonyms:** ACG; bB128O4.1; FLJ32122; FLJ43653; ZIZ2; Zizimin-2; zizimin2

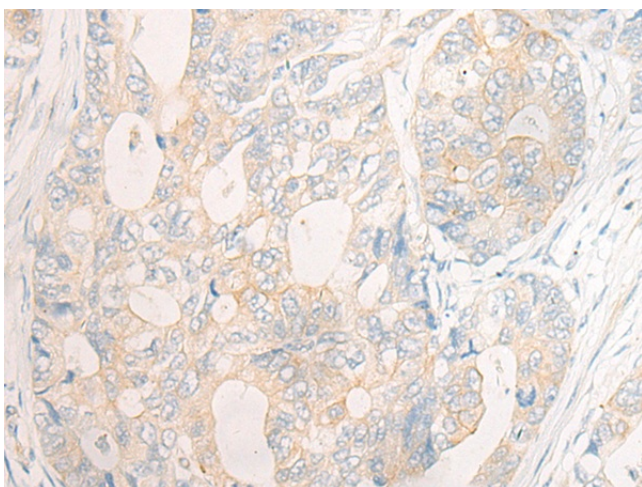
**Product images:**



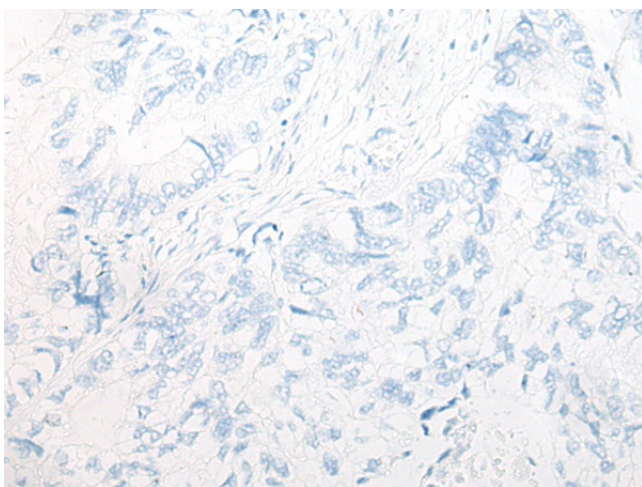
Immunohistochemistry of paraffin-embedded Human liver cancer tissue using TA368199 (DOCK11 Antibody) at dilution 1/35 (Original magnification: ×200)



Immunohistochemistry of paraffin-embedded Human liver cancer tissue using TA368199 (DOCK11 Antibody) at dilution 1/35, treated with synthetic peptide. (Original magnification: ×200)



Immunohistochemistry of paraffin-embedded Human gastric cancer tissue using TA368199 (DOCK11 Antibody) at dilution 1/35 (Original magnification: ×200)



Immunohistochemistry of paraffin-embedded Human gastric cancer tissue using TA368199 (DOCK11 Antibody) at dilution 1/35, treated with synthetic peptide. (Original magnification: ×200)